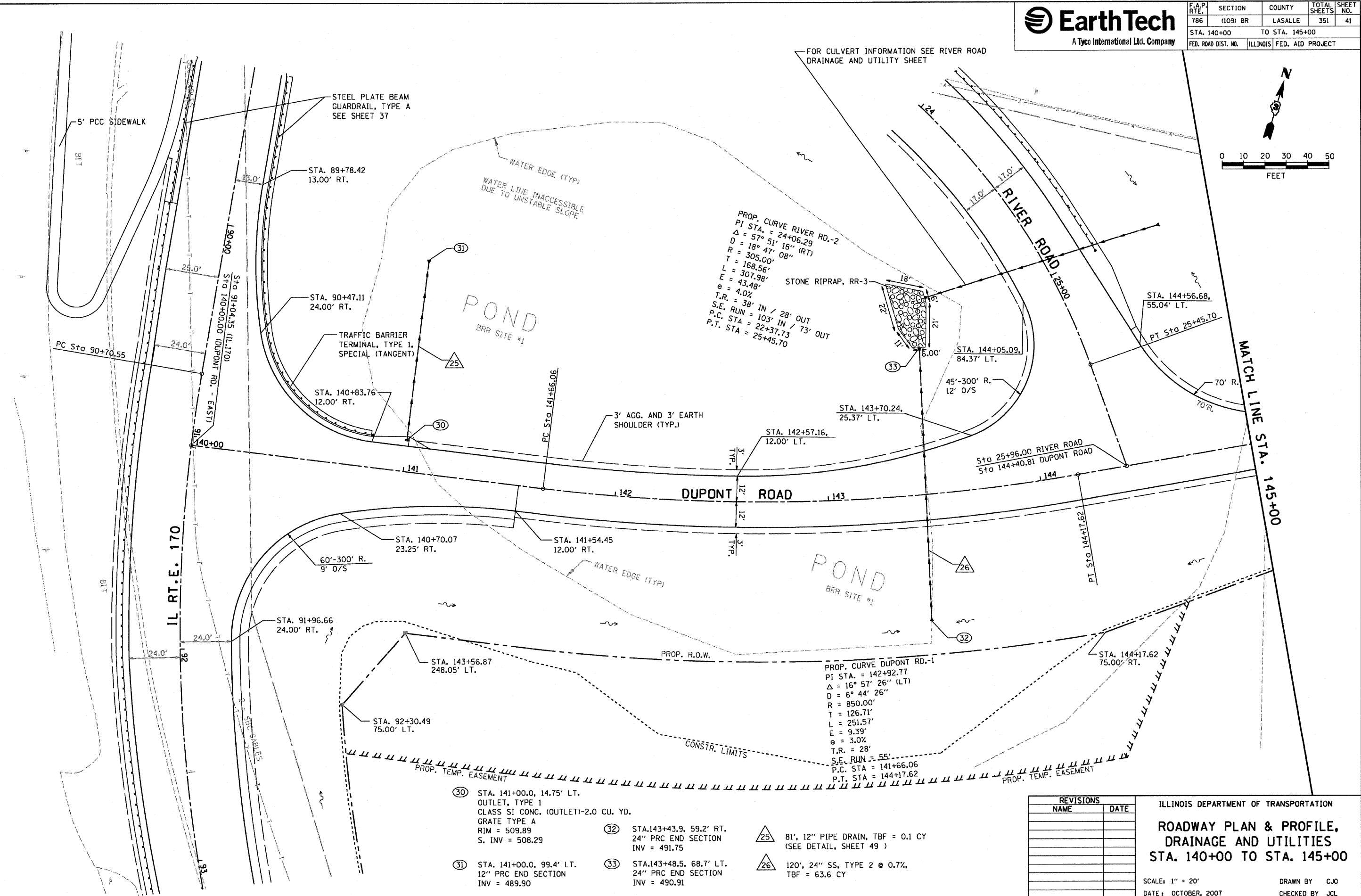
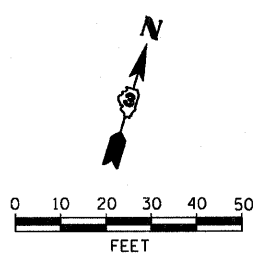




F.A.P. RTE.	SECTION	COUNTY	TOTAL SHEETS	SHEET NO.
786	(109) BR	LASALLE	351	41
STA. 140+00		TO STA. 145+00		
FED. ROAD DIST. NO.		ILLINOIS FED. AID PROJECT		



- 30 STA. 141+00.0, 14.75' LT.  
OUTLET, TYPE 1  
CLASS SI CONC. (OUTLET)-2.0 CU. YD.  
GRATE TYPE A  
RIM = 509.89  
S. INV = 508.29
- 31 STA. 141+00.0, 99.4' LT.  
12" PRC END SECTION  
INV = 489.90
- 32 STA. 143+43.9, 59.2' RT.  
24" PRC END SECTION  
INV = 491.75
- 33 STA. 143+48.5, 68.7' LT.  
24" PRC END SECTION  
INV = 490.91
- 25 81', 12" PIPE DRAIN, TBF = 0.1 CY  
(SEE DETAIL, SHEET 49)
- 26 120', 24" SS, TYPE 2 @ 0.7%,  
TBF = 63.6 CY

REVISIONS	
NAME	DATE

ILLINOIS DEPARTMENT OF TRANSPORTATION

**ROADWAY PLAN & PROFILE,  
DRAINAGE AND UTILITIES**

**STA. 140+00 TO STA. 145+00**

SCALE: 1" = 20'

DATE: OCTOBER, 2007

DRAWN BY: CJO  
CHECKED BY: JCL

DATE = 10/17/2007  
PLOT SCALE = 1" = 20'  
PLOT SCALE = 1" = 20'  
USER NAME = project