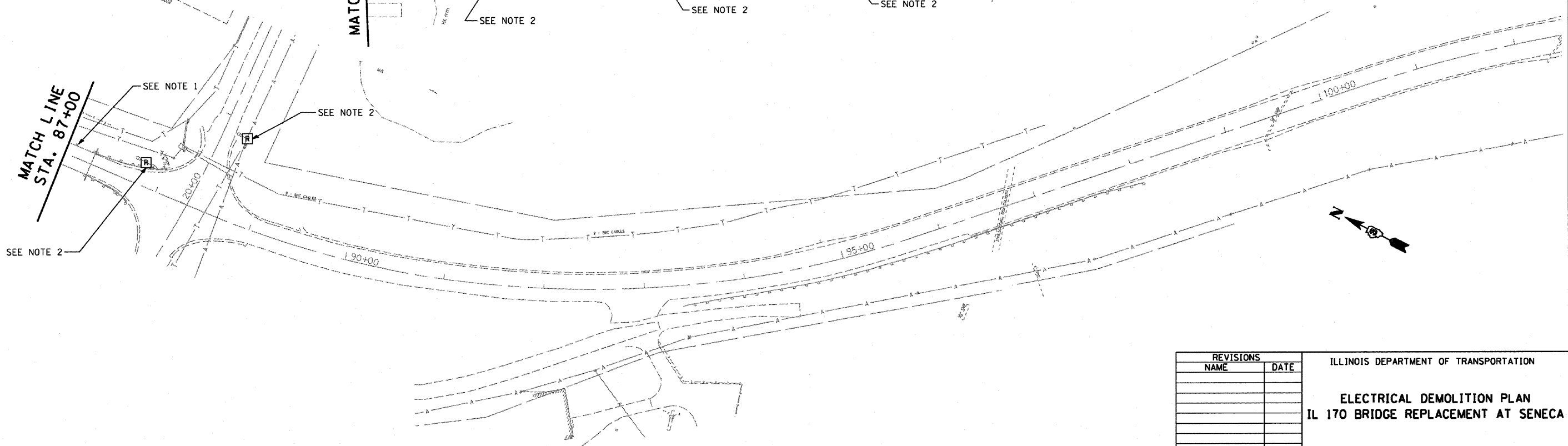
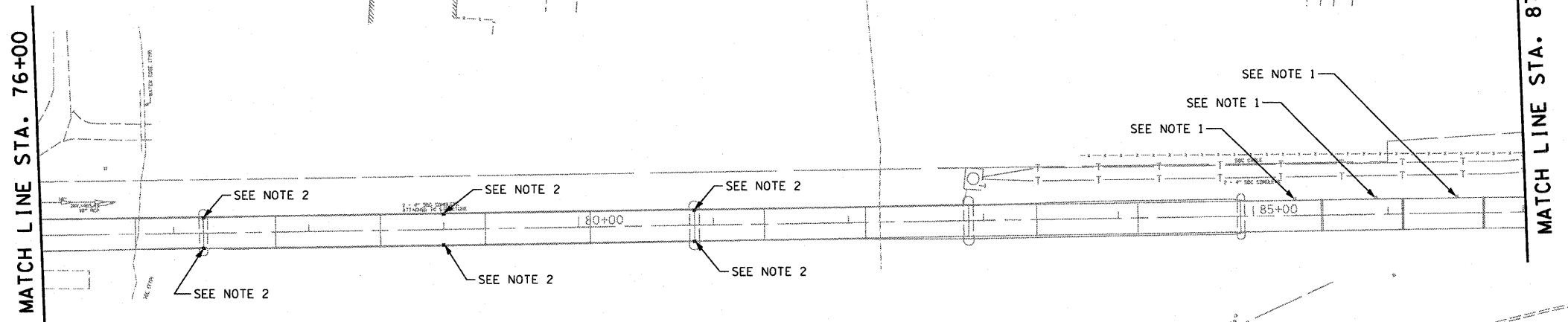
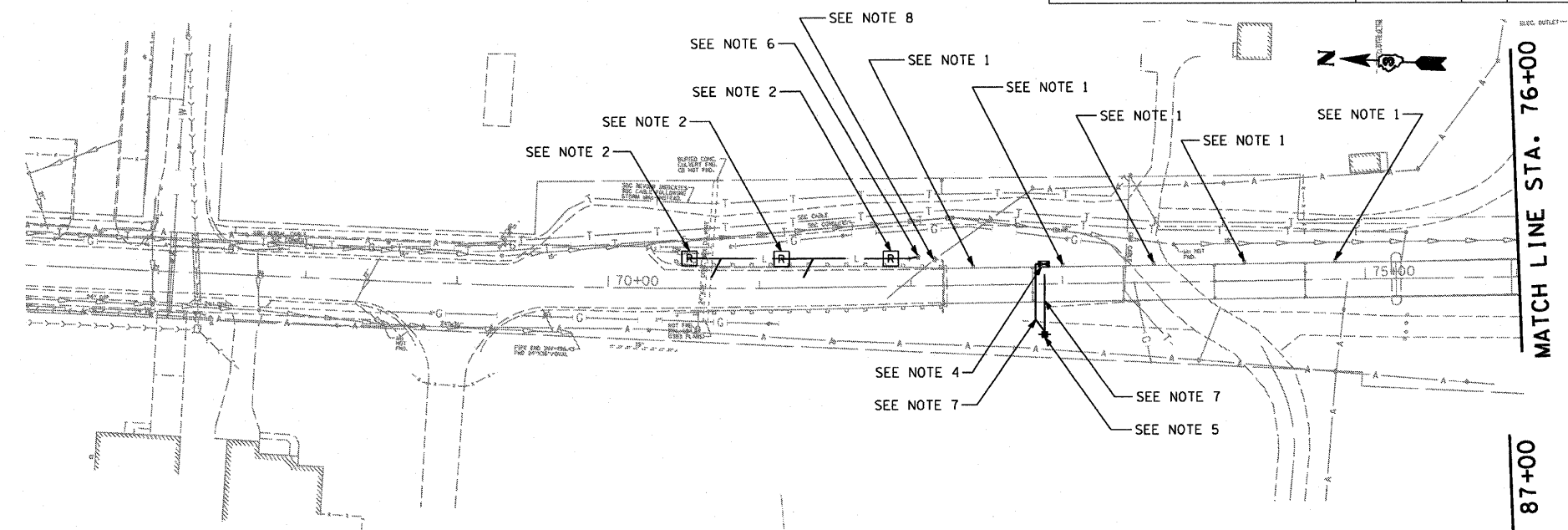




F.A.P. RTE.	SECTION	COUNTY	TOTAL SHEETS	SHEET NO.
786	(109) BR	LASALLE	351	183
STA. 61+50		TO STA. 100+00		
FED. ROAD DIST. NO.		ILLINOIS	FED. AID PROJECT	

**NOTES:**

1. STRUCTURE MOUNTED POLE AND LIGHTING UNITS TO REMAIN IN OPERATION DURING CONSTRUCTION OF NEW BRIDGE. REMOVAL OF EXISTING LIGHTING UNIT, NO SALVAGE WHEN BRIDGE IS REMOVED. DEMOLITION STRUCTURE LIGHTING UNITS INCLUDING CONDUIT AND WIRING SHALL BE REMOVED WITH BRIDGE STRUCTURE.
2. STRUCTURE MOUNTED NAVIGATION LIGHTING UNITS TO REMAIN IN OPERATION DURING CONSTRUCTION OF NEW BRIDGE, REMOVAL OF NAVIGATION OBSTRUCTION WARNING LIGHT SYSTEM SHALL BE PAID LUMP SUM WHEN BRIDGE IS REMOVED.
3. GRADE MOUNTED LIGHTING UNITS SHALL BE REMOVED. PAYMENT SHALL BE PER UNIT EACH, COMPLETE WITH FOUNDATION. (NO SALVAGE).
4. RELOCATE NAVIGATION AND LIGHTING CONTROLLERS. MOUNT CONTROLLERS TO BRIDGE GUARD RAIL. RECONNECT WIRING AT BASE OF EXISTING POLE UNILET T FITTING TO MAINTAIN FED TO LIGHTING, AND NAVIGATION LIGHTING UNITS
5. TEMPORARY ELECTRICAL SERVICE SHALL BE PROVIDED AND MAINTAINED TO RELOCATED BRIDGE LIGHTING CONTROLLERS SERVING NAVIGATION AND LIGHTING UNITS. SEE TEMPORARY ELECTRICAL SERVICE INSTALLATION DETAIL. REMOVAL OF TEMPORARY ELECTRIC SERVICE INSTALLATION REQUIRED AT TIME OF BRIDGE DEMOLITION.
6. EXISTING LIGHTING CONTROLLER SHALL BE REMOVED AND RELOCATED TO BRIDGE GUARD RAIL.
7. AERIAL CABLE, 3-1/2 NO. 4 WITH MESSENGER WIRE.
8. REMOVE ELECTRICAL SERVICE INSTALLATION.



REVISIONS	
NAME	DATE

ILLINOIS DEPARTMENT OF TRANSPORTATION

**ELECTRICAL DEMOLITION PLAN**  
**IL 170 BRIDGE REPLACEMENT AT SENECA**

SCALE: 1" = 50'  
 DATE: OCTOBER, 2007

DRAWN BY CJO  
 CHECKED BY JCL

PLOT DATE = 10/11/2007  
 PLOT NAME = 183  
 PLOT SCALE = 1/4" = 1'-0"  
 USER NAME = Project