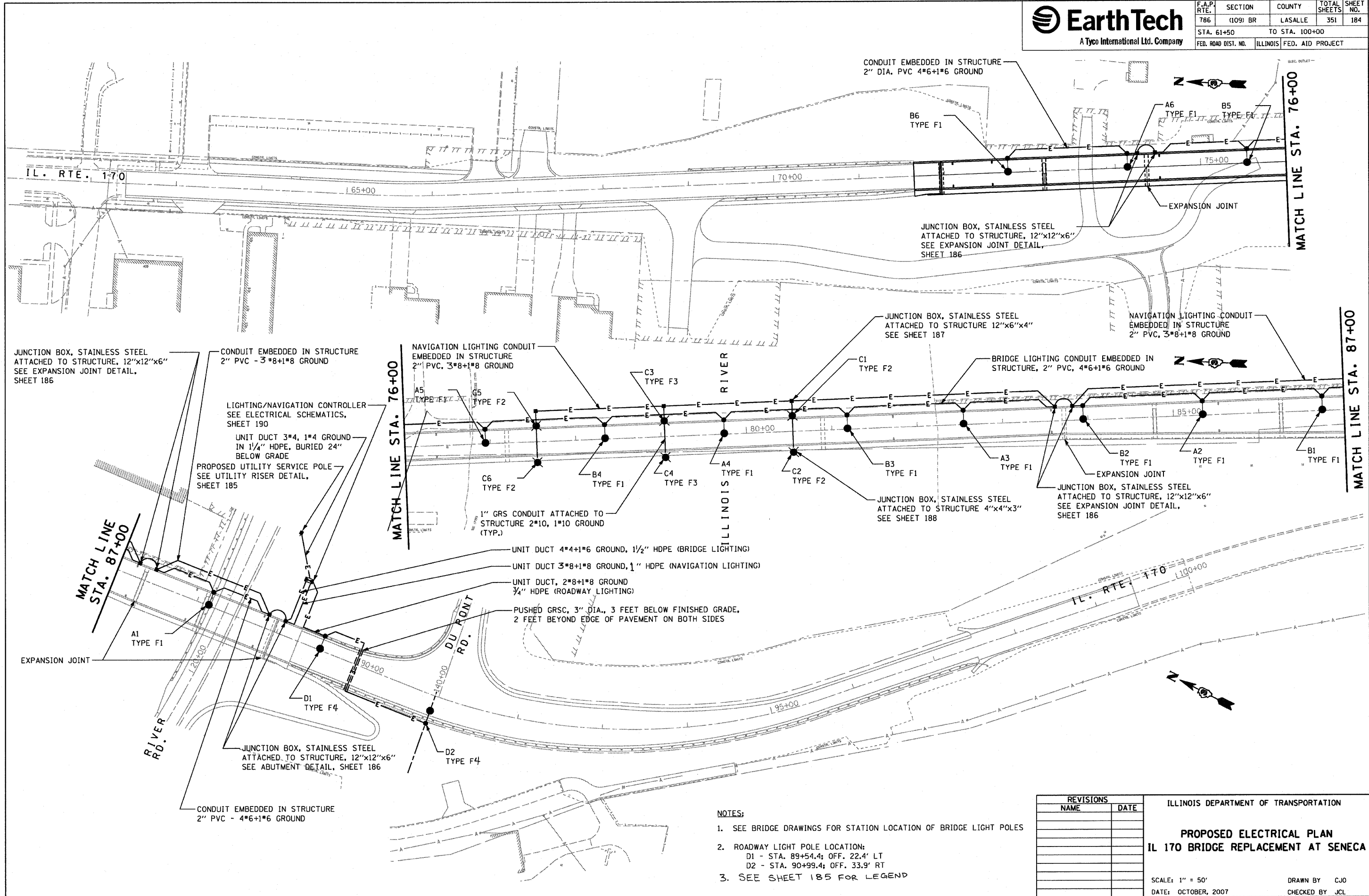


F.A.P. RTE.	SECTION	COUNTY	TOTAL SHEETS	SHEET NO.
786	(109) BR	LASALLE	351	184
STA. 61+50		TO STA. 100+00		
FED. ROAD DIST. NO.	ILLINOIS FED. AID PROJECT			



JUNCTION BOX, STAINLESS STEEL ATTACHED TO STRUCTURE, 12"x12"x6" SEE EXPANSION JOINT DETAIL, SHEET 186

CONDUIT EMBEDDED IN STRUCTURE 2" PVC - 3\*8+1\*8 GROUND

LIGHTING/NAVIGATION CONTROLLER SEE ELECTRICAL SCHEMATICS, SHEET 190

UNIT DUCT 3\*4, 1\*4 GROUND IN 1/4" HDPE, BURIED 24" BELOW GRADE

PROPOSED UTILITY SERVICE POLE SEE UTILITY RISER DETAIL, SHEET 185

NAVIGATION LIGHTING CONDUIT EMBEDDED IN STRUCTURE 2" PVC, 3\*8+1\*8 GROUND

MATCH LINE STA. 76+00

ILLINOIS RIVER

JUNCTION BOX, STAINLESS STEEL ATTACHED TO STRUCTURE 12"x6"x4" SEE SHEET 187

NAVIGATION LIGHTING CONDUIT EMBEDDED IN STRUCTURE 2" PVC, 3\*8+1\*8 GROUND

BRIDGE LIGHTING CONDUIT EMBEDDED IN STRUCTURE, 2" PVC, 4\*6+1\*6 GROUND

JUNCTION BOX, STAINLESS STEEL ATTACHED TO STRUCTURE 4"x4"x3" SEE SHEET 188

JUNCTION BOX, STAINLESS STEEL ATTACHED TO STRUCTURE, 12"x12"x6" SEE EXPANSION JOINT DETAIL, SHEET 186

UNIT DUCT 4\*4+1\*6 GROUND, 1/2" HDPE (BRIDGE LIGHTING)

UNIT DUCT 3\*8+1\*8 GROUND, 1" HDPE (NAVIGATION LIGHTING)

UNIT DUCT, 2\*8+1\*8 GROUND 3/4" HDPE (ROADWAY LIGHTING)

PUSHED GRSC, 3" DIA., 3 FEET BELOW FINISHED GRADE, 2 FEET BEYOND EDGE OF PAVEMENT ON BOTH SIDES

MATCH LINE STA. 87+00

EXPANSION JOINT

RIVER RD.

JUNCTION BOX, STAINLESS STEEL ATTACHED TO STRUCTURE, 12"x12"x6" SEE ABUTMENT DETAIL, SHEET 186

CONDUIT EMBEDDED IN STRUCTURE 2" PVC - 4\*6+1\*6 GROUND

MATCH LINE STA. 87+00

IL. RTE. 170

**NOTES:**

- SEE BRIDGE DRAWINGS FOR STATION LOCATION OF BRIDGE LIGHT POLES
- ROADWAY LIGHT POLE LOCATION:  
D1 - STA. 89+54.4; OFF. 22.4' LT  
D2 - STA. 90+99.4; OFF. 33.9' RT
- SEE SHEET 185 FOR LEGEND

REVISIONS	
NAME	DATE

ILLINOIS DEPARTMENT OF TRANSPORTATION

**PROPOSED ELECTRICAL PLAN  
IL 170 BRIDGE REPLACEMENT AT SENECA**

SCALE: 1" = 50'  
DATE: OCTOBER, 2007

DRAWN BY: CJO  
CHECKED BY: JCL

PLOT DATE = 10/11/2007  
PLOT SCALE = 1" = 50'  
PLOT SCALE = 1" = 50'  
USER NAME = project