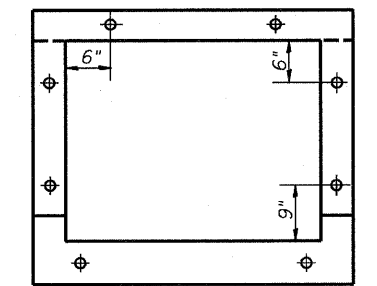
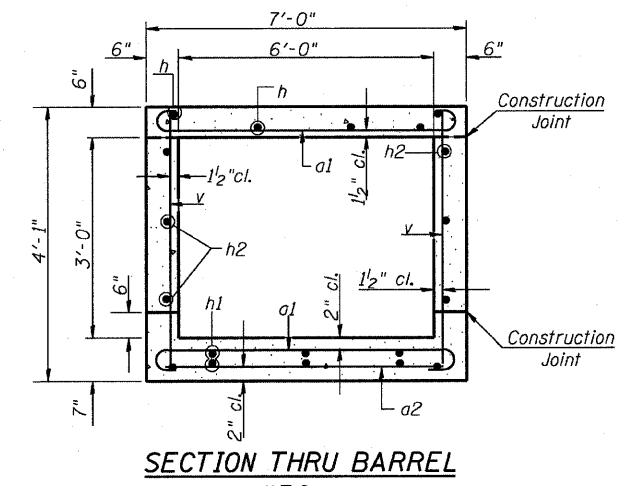
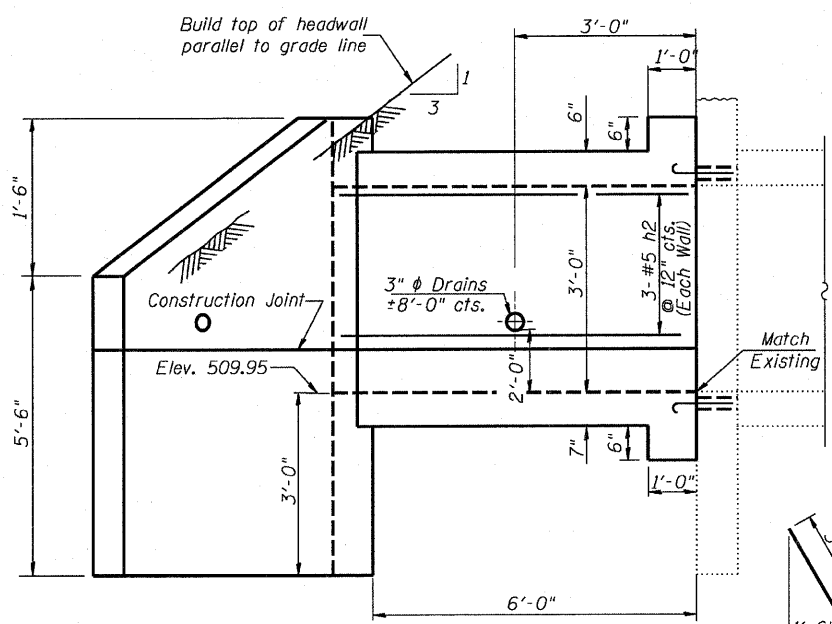
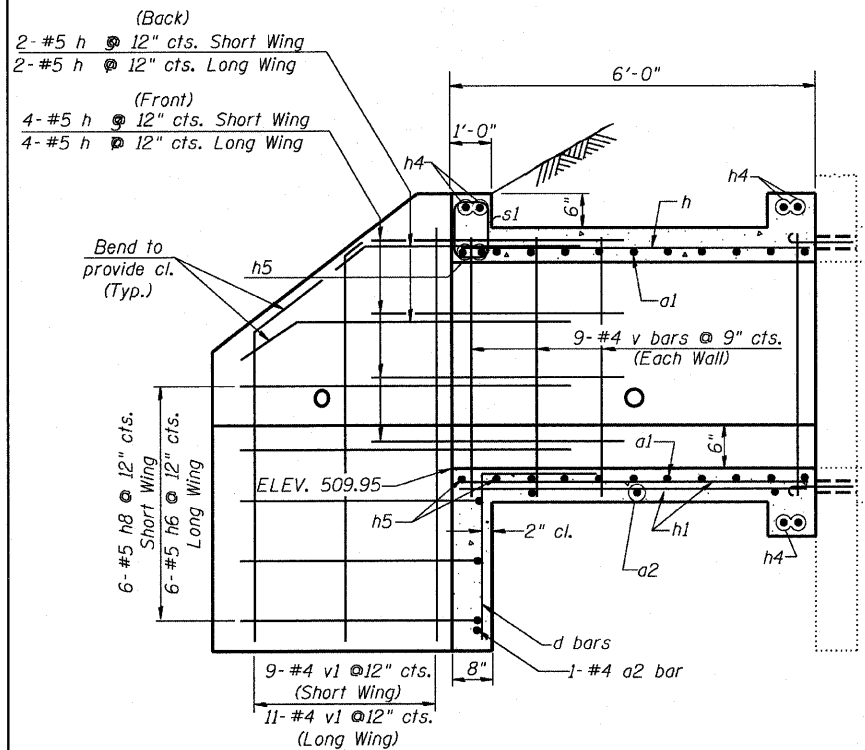
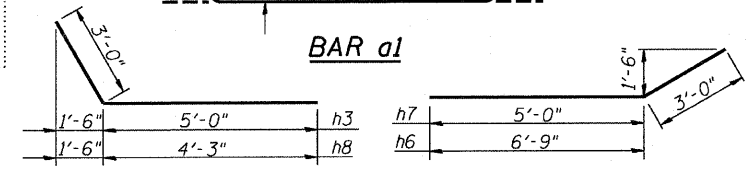


F.A.P. RTE.	SECTION	COUNTY	TOTAL SHEETS	SHEET NO.
786	(109) BR	LASALLE	351	191
STA.		TO STA.		
FED. ROAD DIST. NO.		ILLINOIS	FED. AID PROJECT	



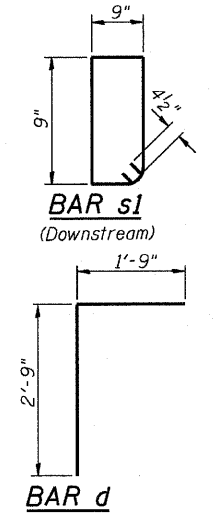
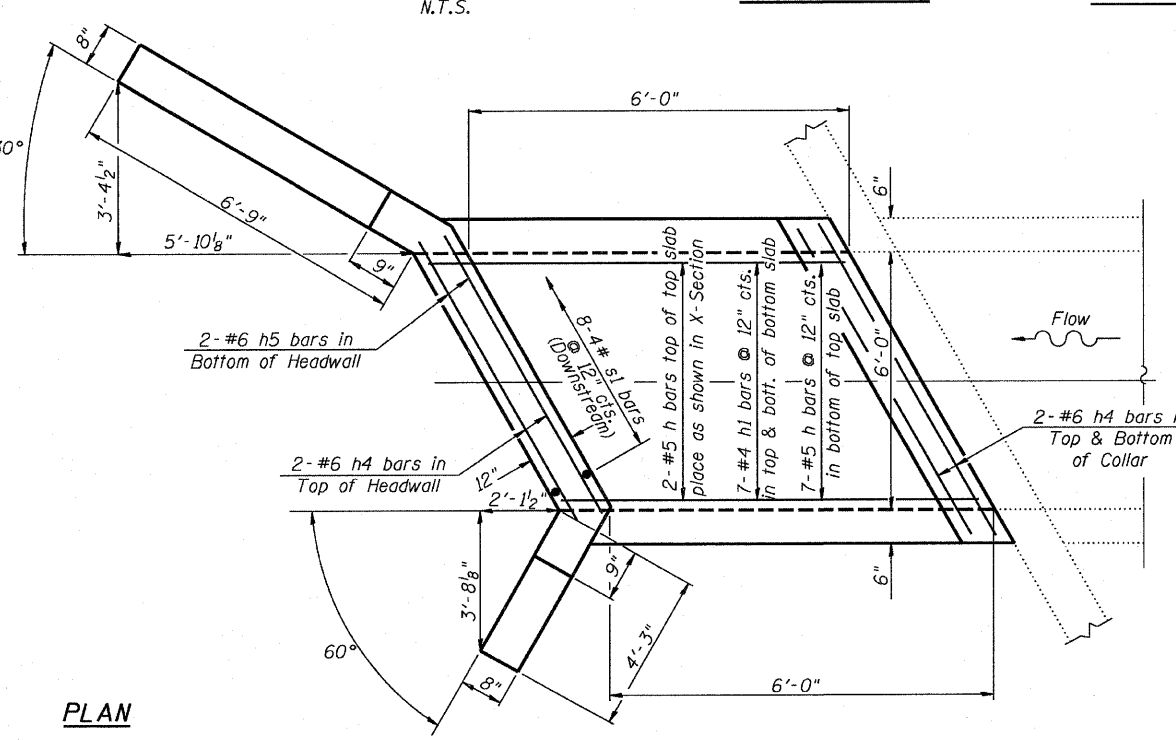
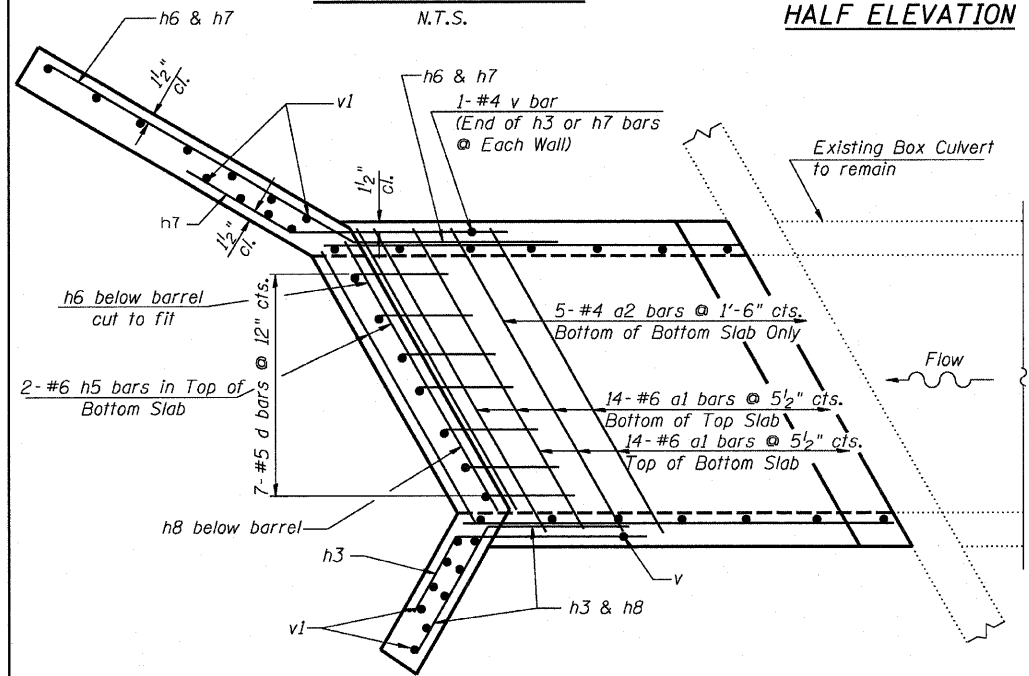
Sidewalls 2 @ 21" Cts.
Top & Bottom . . . 5 @ 15" Cts.

Notes: Expansion bolts shall consist of self drilling expansion shield and 3/4" diameter hooked bolts. Hooked bolts shall extend a minimum of 9" into new concrete. Minimum Certified Proof Load = 4,080 lbs



BILL OF MATERIAL

Bar	No.	Size	Length	Shape
a1	28	#6	9'-1"	U
a2	6	#4	7'-9"	—
d	7	#5	4'-6"	┌
h	9	#5	6'-8"	—
h1	14	#4	6'-8"	—
h2	6	#5	6'-8"	—
h3	6	#5	8'-0"	┌
h4	6	#6	7'-9"	—
h5	4	#6	7'-9"	—
h6	6	#5	9'-9"	┌
h7	6	#5	8'-0"	—
h8	6	#5	7'-3"	┌
v	20	#4	3'-9"	—
v1	20	#4	6'-8"	—
s1	8	#4	3'-9"	□
Conc. Box Culv.		Cu. Yds.	5.0	
Reinforcement Bars		Lbs	1,100	
Expansion Bolts		Each	14	



GENERAL NOTES

Class SI Concrete shall be used throughout.
At least six feet of Barrel shall be poured monolithically with wingwalls.
Exposed edges shall be beveled 3/4".
For backfilling and embankments see Standard Specifications.
Tilt hook of a1 bars, if necessary, to obtain 1/2" minimum clearance at top of hook.
Reinforcement Bars shall conform to the requirements of AASHTO M-31, M-42 or M-53, Grade 60.

DESIGN STRESSES

fy = 60,000 p.s.i.
f'c = 3,500 p.s.i.

LOADING HS 20-44 & ALT.

REVISIONS	
NAME	DATE

ILLINOIS DEPARTMENT OF TRANSPORTATION

**BOX CULVERT EXTENSION
STATION 96+45.63**

SCALE: DATE: JUNE 29, 2007 DRAWN BY: JHR CHECKED BY: CLS