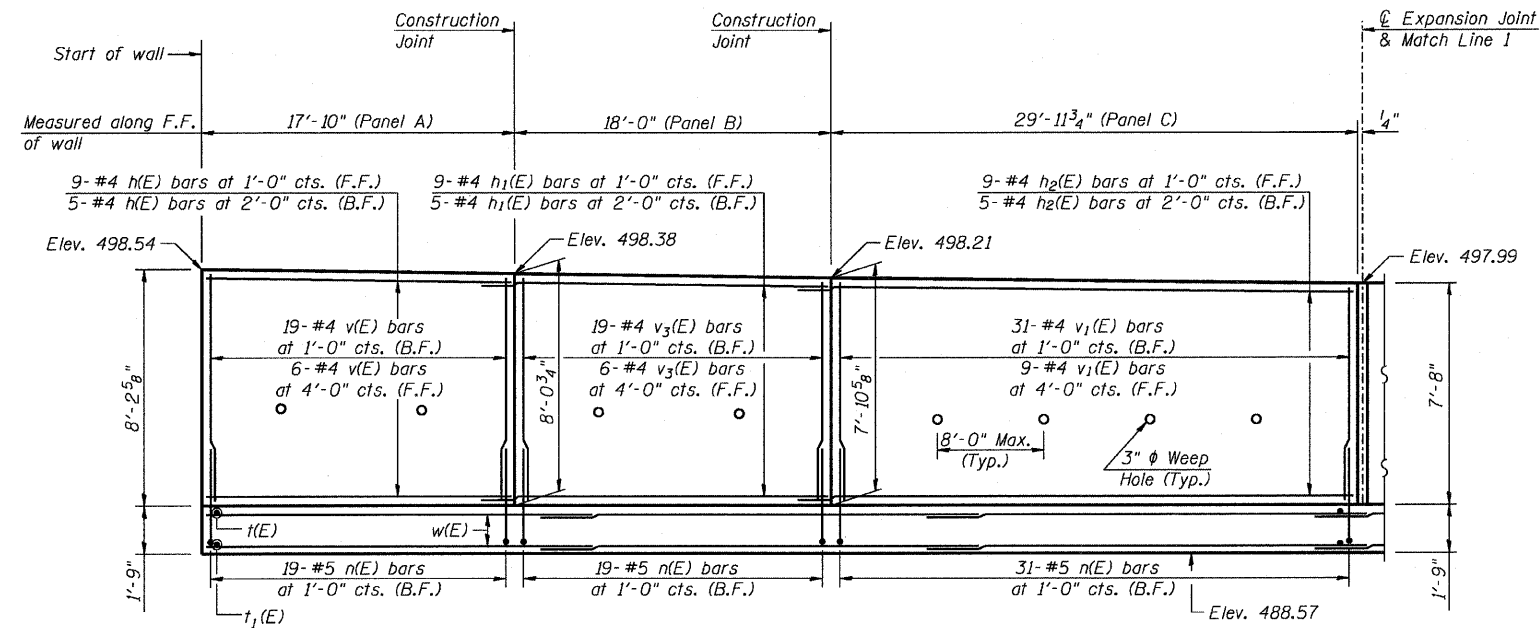


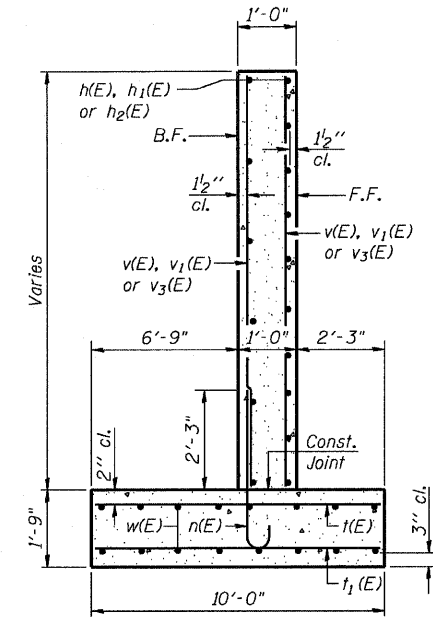
STATE OF ILLINOIS  
DEPARTMENT OF TRANSPORTATION

F.A.P. ROUTE NO.	SECTION	COUNTY	TOTAL SHEETS	SHEET NO.
786	109 BR	La Salle	351	194
FED. ROAD DIST. NO. 7	ILLINOIS	FED. AID PROJECT-		

Contract #66607

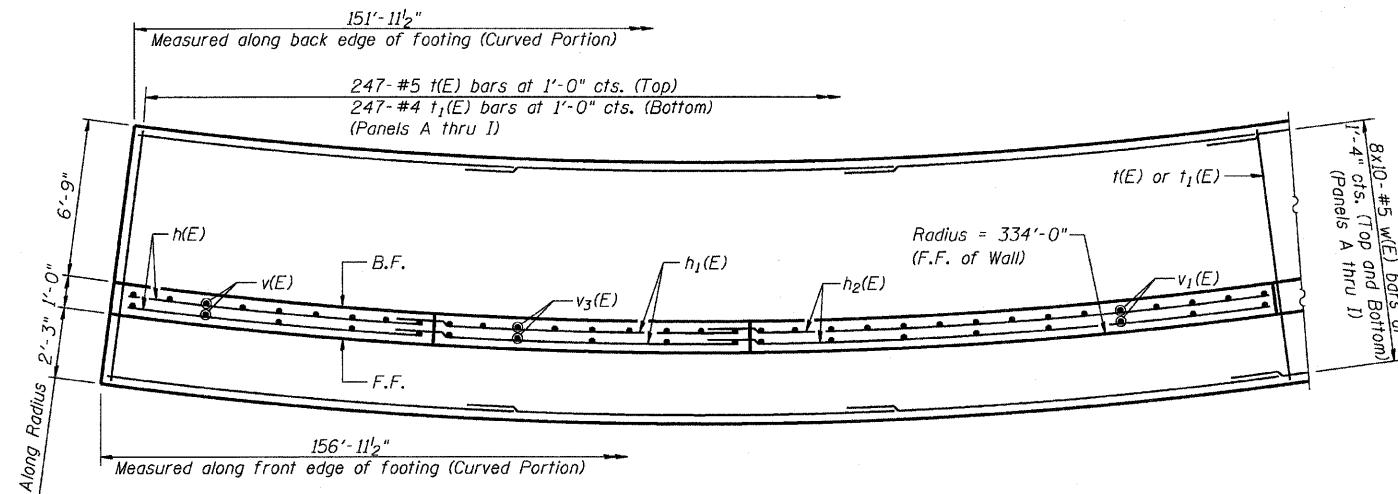


**ELEVATION OF PANELS A TO C**  
(Front Face of Wall)



**SECTION THRU WALL**

**MIN BAR LAP**  
#4 Bars = 1'-8"  
#5 Bars = 2'-2"



**FOOTING PLAN OF PANELS A TO C**

Notes:  
Bend w(E), h(E), h<sub>1</sub>(E) and h<sub>2</sub>(E) bars to match curve.  
Bars indicated thus 8x10-#5, etc., indicates 8 lines of bars with 10 lengths of #5 bars per line.  
See Sheet 6 of 6 For Joint Details, Bar Bends and Bar List.

DESIGNED	JVR
CHECKED	DLS
DRAWN	JVR
CHECKED	DLS



**PANELS A, B & C**  
**RETAINING WALL**  
**RIVER ROAD**  
**SECTION 109 BR**  
**LA SALLE COUNTY**