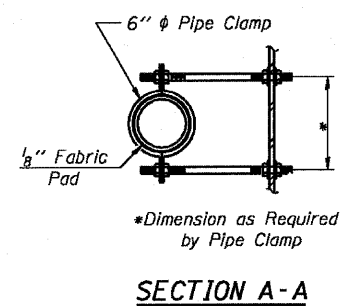
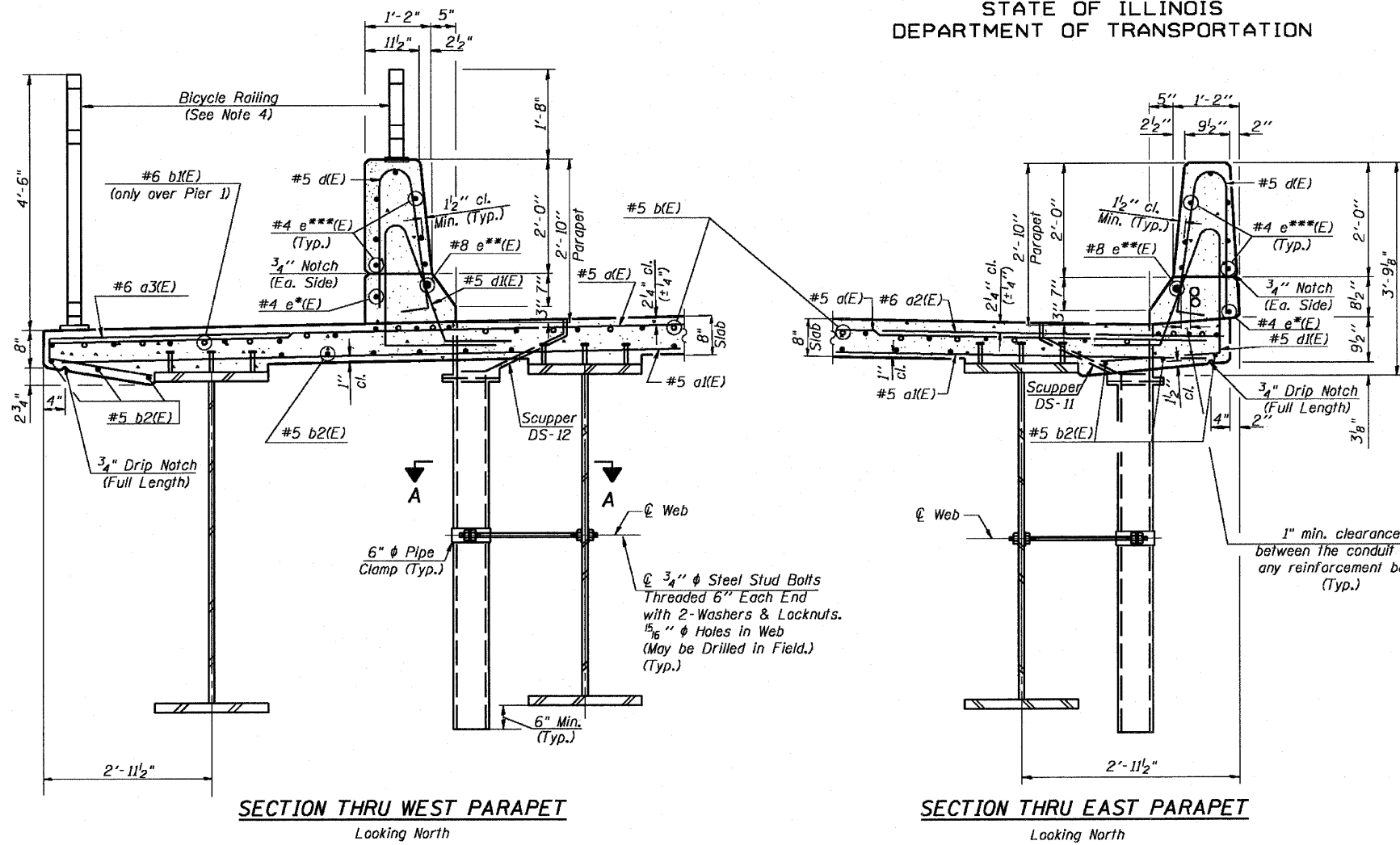


STATE OF ILLINOIS  
DEPARTMENT OF TRANSPORTATION



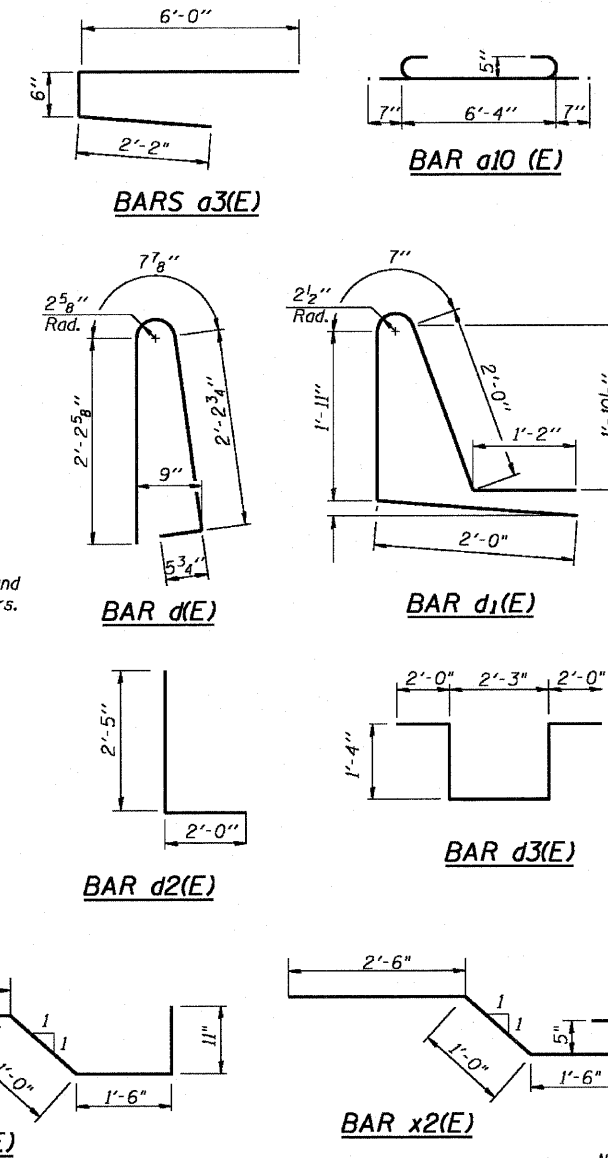
F.A.P. ROUTE NO.	SECTION	COUNTY	TOTAL SHEETS	SHEET NO.	SHEET NO. 22
786	109 BR	La Salle	351	222	89 SHEETS
FED. ROAD DIST. NO. 7	ILLINOIS	FED. AID PROJECT			

Contract # 66607



DESIGNED - CLS
CHECKED - RJC
DRAWN - JHR
CHECKED - RJC

#4 e\*(E) = Bars #4 e(E) or #4 e2(E)  
#8 e\*\*(E) = Bars #8 e1(E) or #8 e3(E)  
#4 e\*\*\* (E) = Bars #4 e(E) or #4 e4(E) or #4 e5(E)



**SUPERSTRUCTURE  
BILL OF MATERIAL**

Unit 1 (N. Abut. to Pier 2)

Bar	No.	Size	Length	Shape
a(E)	357	#5	38'-4"	—
a1(E)	289	#5	37'-8"	—
a2(E)	179	#6	6'-0"	—
a3(E)	179	#6	8'-8"	—
a4(E)	32	#5	2'-0"	—
a10(E)	30	#5	7'-6"	—
a11(E)	1	#5	32'-7"	—
a12(E)	8	#6	38'-4"	—
b(E)	287	#5	36'-3"	—
b1(E)	117	#6	26'-9"	—
b2(E)	288	#5	32'-0"	—
d(E)	526	#5	5'-7"	—
d1(E)	526	#5	7'-8"	—
d2(E)	6	#6	4'-5"	—
d3(E)	10	#6	8'-11"	—
e(E)	144	#4	19'-8"	—
e1(E)	4	#8	19'-8"	—
e2(E)	12	#4	34'-5"	—
e3(E)	12	#8	35'-10"	—
e4(E)	14	#4	20'-6"	—
e5(E)	14	#4	19'-4"	—
x1(E)	30	#5	5'-11"	—
x2(E)	30	#5	5'-11"	—
Reinforcement Bars, Epoxy Coated			Pound	67,250
Concrete Superstructure			Cu. Yd.	305.1
Bridge Deck Grooving			Sq. Yd.	756
Protective Coat			Sq. Yd.	1,003

**MINIMUM BAR LAPS**

(Slab)  
#5 bar = 2'-2"  
#6 bar = 2'-7"  
#7 bar = 3'-5"  
(Parapet)  
#4 bar = 1'-4"  
#8 bar = 3'-5"

- Notes:**
- Work this sheet with Sheets 19, 20, & 21.
  - See Sheet 34 for Parapet Joint Details, Parapet Projection Details/Reinforcement, & Scupper Reinforcement Details.
  - See Sheets 35 & 36 for DS-11 & DS-12 Drainage Scupper Details, respectively.
  - See Sheet 37 for Bicycle Railing Details.
  - Bars indicated thus 20x3-#5 etc. indicates 20 lines of bars with 3 lengths per line.
  - Cut longitudinal reinforcement to clear drainage scuppers.

**SUPERSTRUCTURE DETAILS**

**UNIT 1**

IL. 170 F.A.P. 786 OVER  
ILLINOIS RIVER AT SENECA  
PUBLIC WATERS  
LA SALLE COUNTY, SECTION 109 BR  
STATION 79+04.42  
STRUCTURE NO. 050-0246