

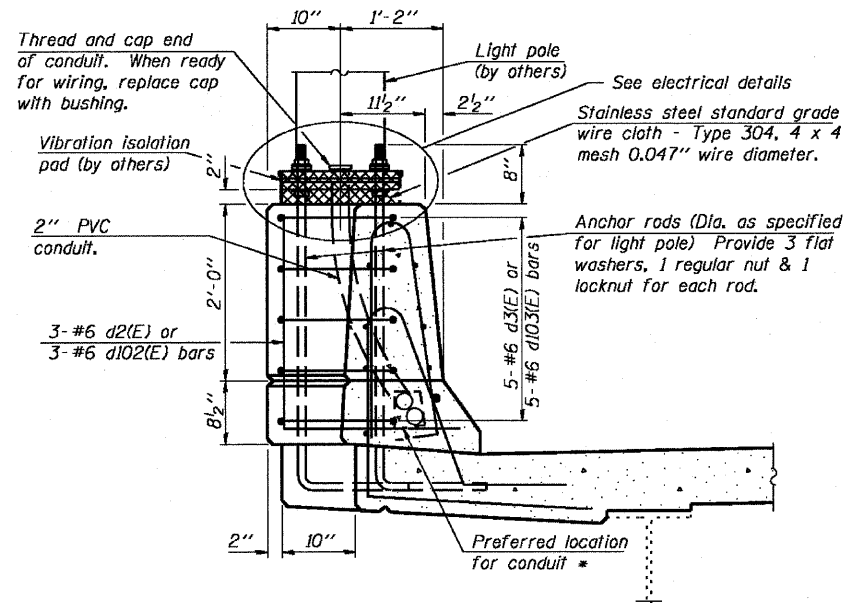
STATE OF ILLINOIS  
DEPARTMENT OF TRANSPORTATION



| F.A.P. ROUTE NO.      | SECTION  | COUNTY            | TOTAL SHEETS | SHEET NO. |
|-----------------------|----------|-------------------|--------------|-----------|
| 786                   | 109 BR   | La Salle          | 351          | 234       |
| FED. ROAD DIST. NO. 7 | ILLINOIS | FED. AID PROJECT- |              |           |

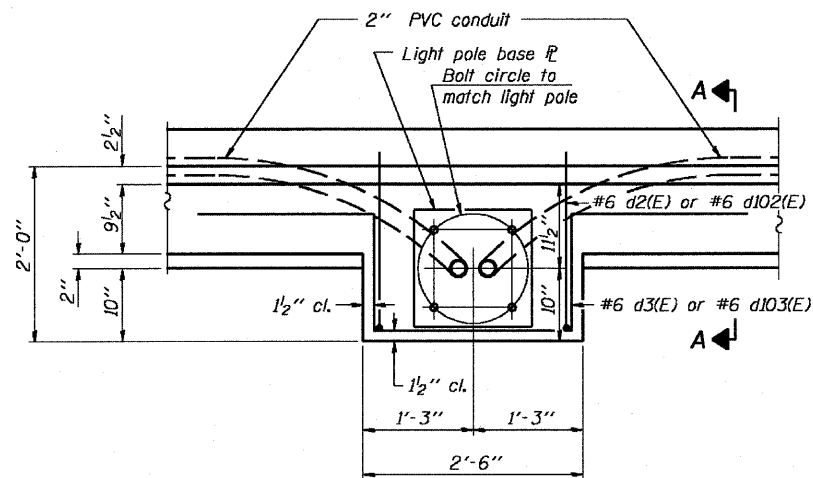
SHEET NO. 34  
89 SHEETS

Contract # 66607



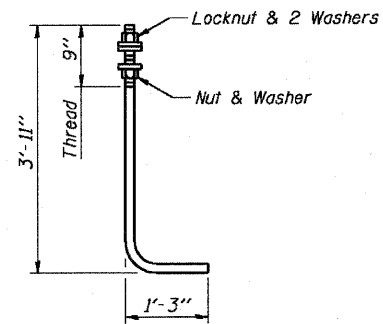
**SECTION A-A**

\* All conduit encased in a parapet shall have a min. clearance of 1" from all reinforcement.



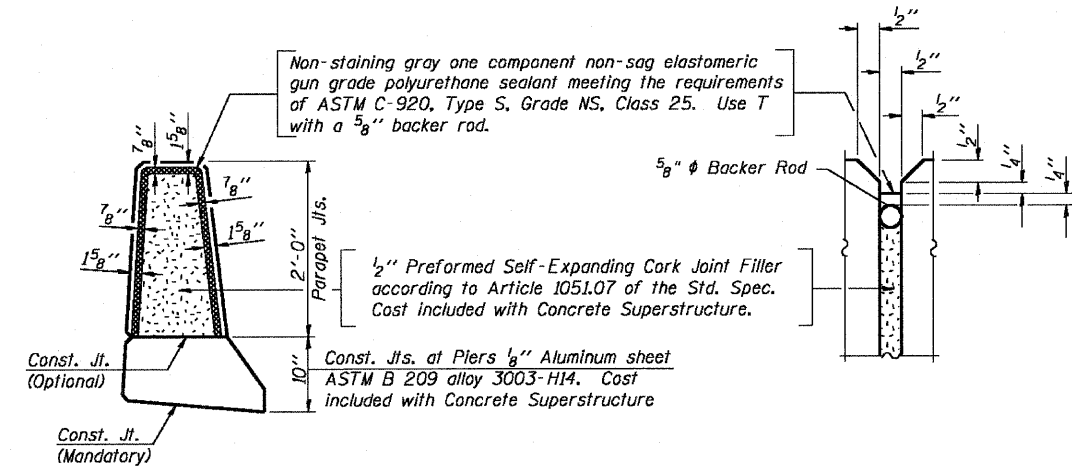
**PLAN**

Note:  
Cost of anchor rods and conduit is included with Concrete Superstructure.

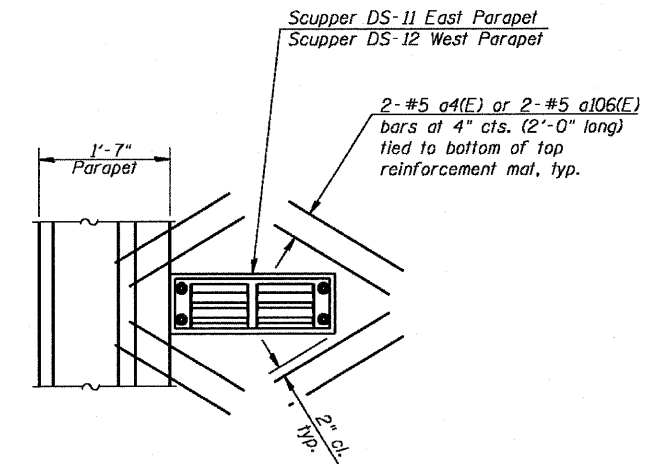


**ANCHOR ROD**

Diameter as specified for light poles.  
(ASTM F 1554 Grade 105)



**PARAPET JOINT DETAILS**



**SCUPPER REINFORCEMENT DETAIL**

|          |       |
|----------|-------|
| DESIGNED | - CLS |
| CHECKED  | - RJC |
| DRAWN    | - JHR |
| CHECKED  | - RJC |

**GENERAL SUPERSTRUCTURE DETAILS**  
IL. 170 F.A.P. 786 OVER  
ILLINOIS RIVER AT SENECA  
PUBLIC WATERS  
LA SALLE COUNTY, SECTION 109 BR  
STATION 79+04.42  
STRUCTURE NO. 050-0246