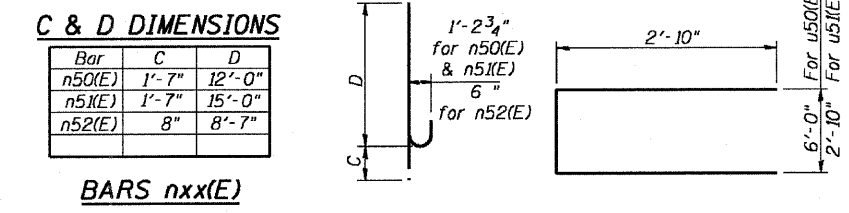
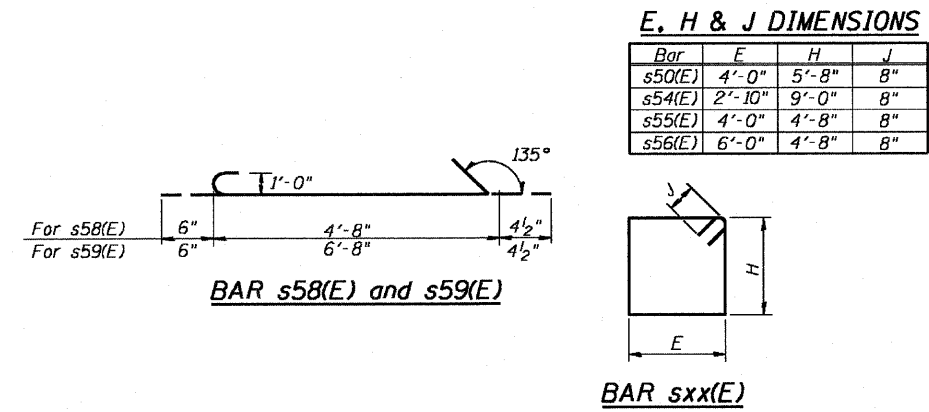
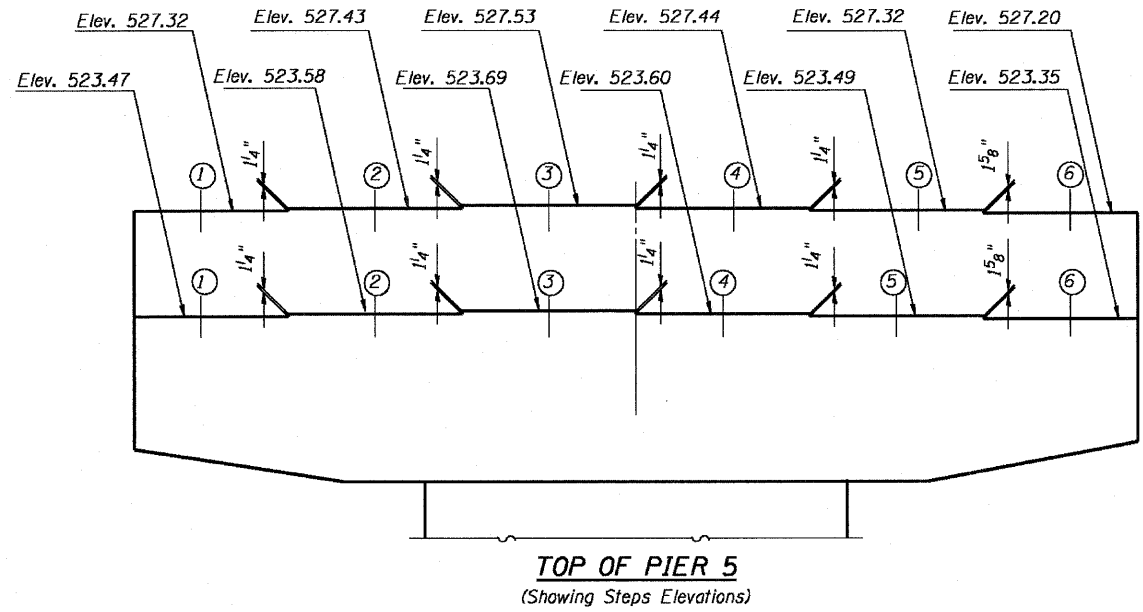
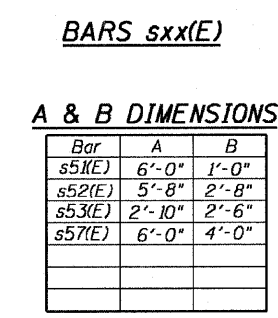
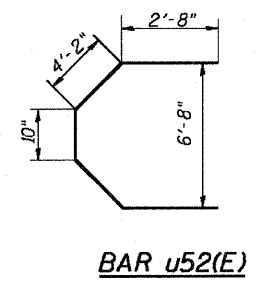
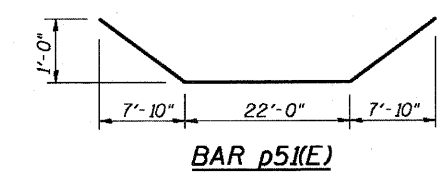
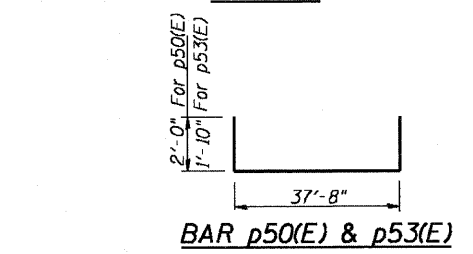
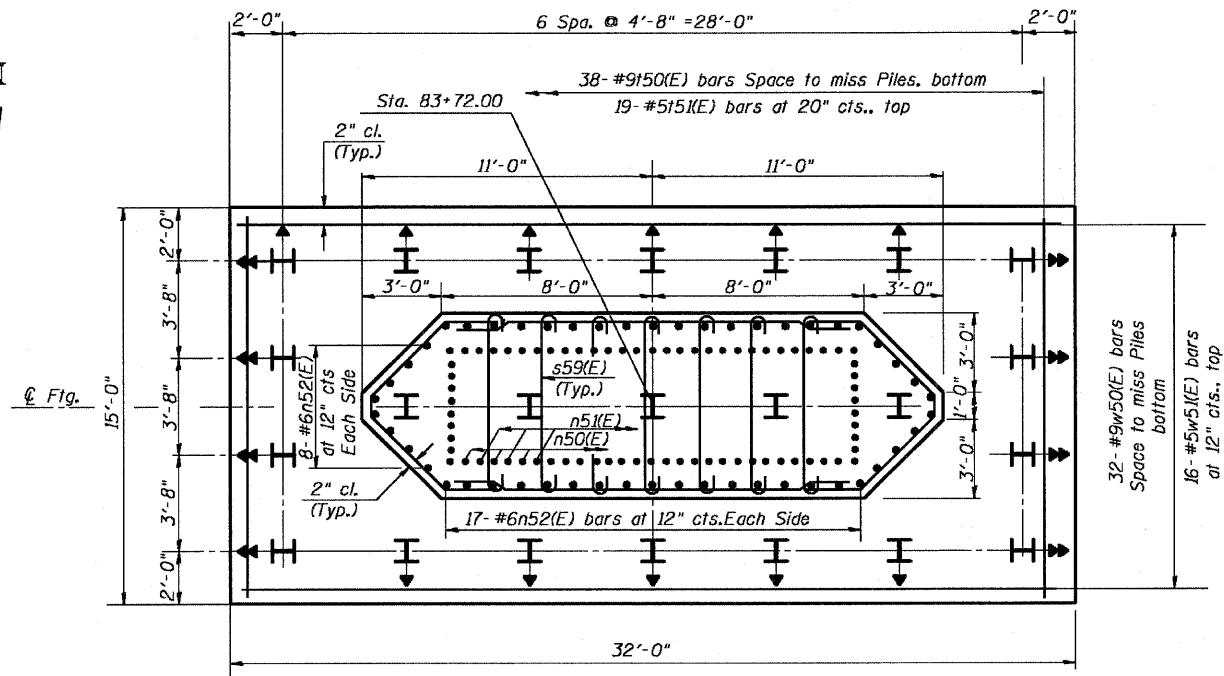


Contract # 66607



**BILL OF MATERIAL**

Bar	No.	Size	Length	Shape
h50(E)	16	#9	37'-8"	
h51(E)	42	#6	15'-8"	
h52(E)	10	#6	16'-0"	
h53(E)	8	#5	19'-5"	
n50(E)	38	#11	13'-7"	
n51(E)	36	#11	16'-7"	
n52(E)	50	#6	9'-3"	
p50(E)	15	#11	41'-8"	
p51(E)	6	#9	37'-10"	
p52(E)	7	#9	37'-8"	
p53(E)	18	#10	41'-4"	
s50(E)	62	#6	20'-8"	
s51(E)	52	#6	8'-0"	
s52(E)	42	#6	11'-0"	
s53(E)	48	#6	7'-10"	
s54(E)	61	#6	25'-0"	
s55(E)	38	#6	18'-8"	
s56(E)	38	#6	22'-8"	
s57(E)	38	#6	14'-0"	
s58(E)	147	#4	5'-7"	
s59(E)	35	#4	7'-7"	
u50(E)	38	#9	14'-8"	
u51(E)	19	#5	14'-8"	
u50(E)	10	#6	11'-8"	
u51(E)	8	#6	8'-6"	
u52(E)	10	#6	14'-6"	
v50(E)	38	#11	22'-0"	
v51(E)	36	#11	19'-0"	
w50(E)	32	#9	31'-8"	
w51(E)	16	#5	31'-8"	
Structure Excavation	Cu. Yd.	140		
Concrete Structures	Cu. Yd.	232		
Reinforcement Bars, Epoxy Coated	Pound	42,960		
Furnishing Steel Piles HP 12x74	Foot	770		
Driving Piles	Foot	770		
Test Pile,	Each	1		
Mechanical Splice	Each	74		
Pile Shoes	Each	23		



**PILE DATA**

Type: HP12x74 with Pile Shoes  
Nominal Required Bearing = 589K  
Allowable Resistance Available = 196K  
Est. Length: 35'  
No. Production Piles: 22  
No. Test Piles: 1

DESIGNED - RJC
CHECKED - DEV
DRAWN - JHR
CHECKED - DEV

Notes:  
Space reinforcement in cap to miss anchor bolts.  
Pour steps monolithically with cap.  
For details of piles, see sheet 81 of 89.

**PIER 5 DETAILS**  
**IL. 170 F.A.P. 786 OVER**  
**ILLINOIS RIVER AT SENECA**  
**PUBLIC WATERS**  
**LA SALLE COUNTY, SECTION 109 BR**  
**STATION 79+04.42**  
**STRUCTURE NO. 050-0246**