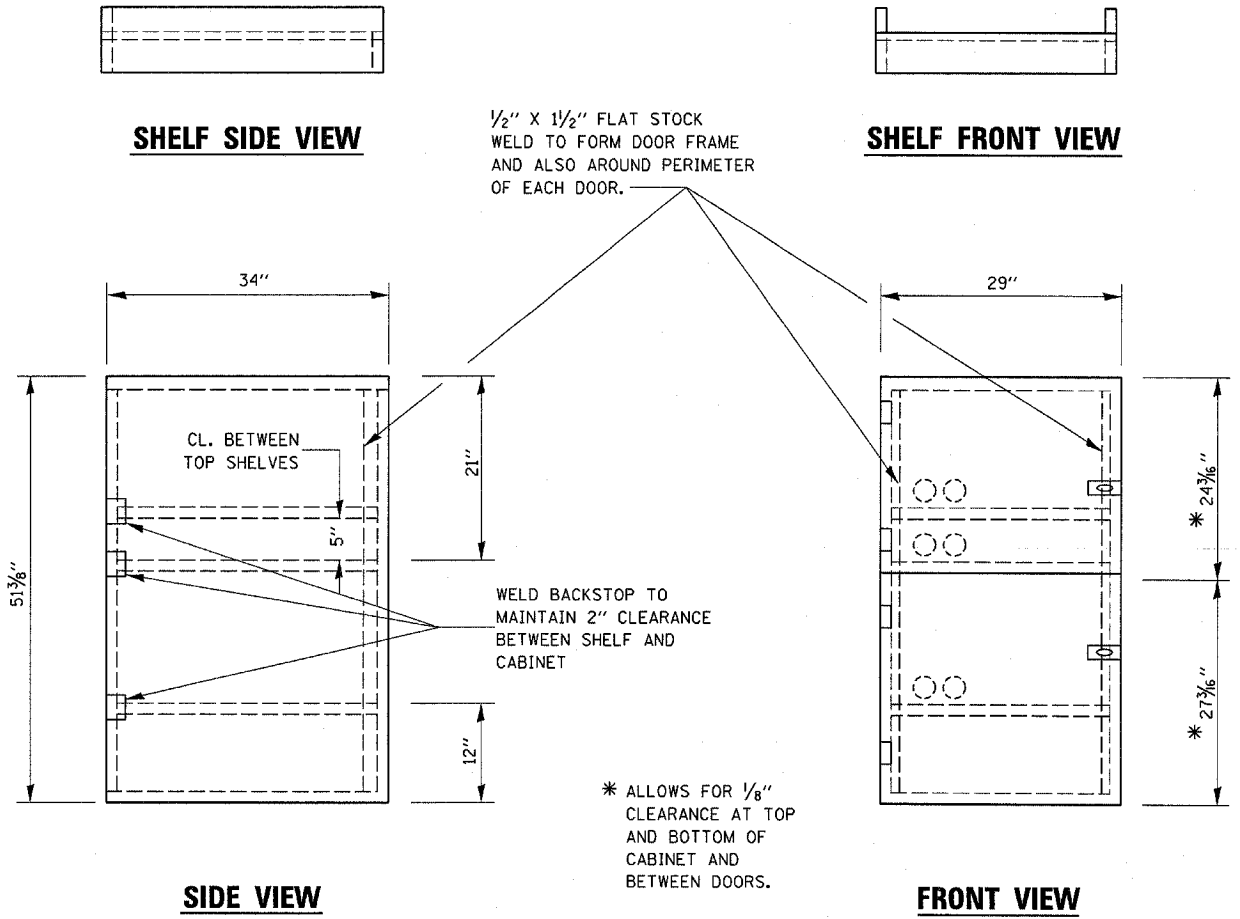


\* MINIMUM DISTANCE  
 400' FOR 55 MPH  
 250' FOR 45 MPH  
 100' FOR 35 MPH OR LESS

NOTES:  
 THE TRANSVERSE SPREAD OF THE "X"  
 MAY VARY ACCORDING TO LANE WIDTH.

ON MULTI-LANE ROADS, THE STOP LINES  
 SHALL EXTEND ACROSS ALL APPROACH  
 LANES AND SEPARATE RXR SYMBOLS SHALL  
 BE PLACED ADJACENT TO EACH OTHER  
 IN EACH LANE.

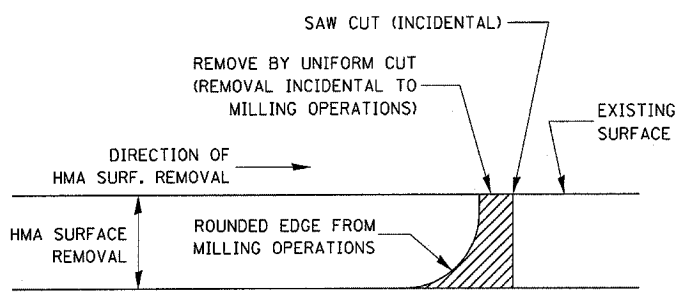
**PAVEMENT MARKINGS AT  
 RAILROAD-HIGHWAY GRADE CROSSING**



**SIDE VIEW**

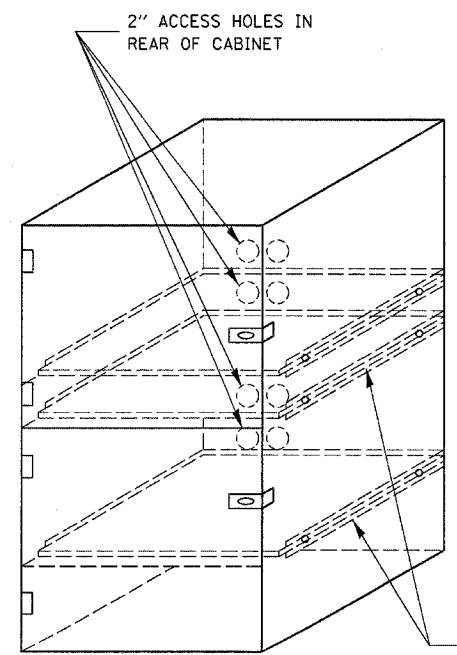
**FRONT VIEW**

\* ALLOWS FOR 1/8" CLEARANCE AT TOP AND BOTTOM OF CABINET AND BETWEEN DOORS.



NOTE:  
 WHEN MILLING OPERATIONS PRODUCE A ROUNDED EDGE,  
 THEN A SAW CUT SHALL BE USED TO MANUFACTURE  
 A PERPENDICULAR EDGE AS SHOWN IN THE DETAIL.  
 THE ENGINEER SHALL BE THE SOLE JUDGE  
 CONCERNING THE USE OF THIS DETAIL

**HMA DETAIL AT BUTT JOINTS**



FLAT STOCK DIMENSIONS VARY  
 DEPENDING ON TYPE OF  
 ROLLER ASSEMBLY

- NOTES:
1. USE 16 GAUGE STEEL FOR CABINET.
  2. THE TOP SHELF SHALL SLIDE IN OR OUT WITH THE TOP DOOR OPEN.
  3. ALL HINGES AND HASPS WILL BE WELDED TO THE CABINET.
  4. ALL EDGES SHALL BE GROUND SMOOTH.
  5. TWO (2" DIA.) ACCESS HOLES WILL BE REQUIRED FOR EACH SHELF.
  6. CABINET SHALL BE PAINTED WITH TWO COATS OF FLAT PAINT.
  7. 2 EACH MATCHING KEY PADLOCKS, WITH 3 KEYS PROVIDED, MASTER MODEL 3 T OR EQUIVALENT.
  8. 4 EACH PLAIN STEEL, NON-REMOVABLE PIN, NO HOLE 4" x 4" SQUARE CORNER HINGES TO BE WELDED ON.
  9. 2 EACH EXTRA HEAVY, PLAIN STEEL, FIXED STAPLE, NO HOLE, 7/4" HASPS TO BE WELDED ON.

**LOCKABLE COMPUTER CABINET**

FILE NAME = c:\projects\ed05506\details.dgn	USER NAME = duncanbd	DESIGNED -	REVISED -	<b>STATE OF ILLINOIS DEPARTMENT OF TRANSPORTATION</b>	<b>DETAILS</b>				F.A.P. RTE. 591	SECTION (15R)RS-5	COUNTY *	TOTAL SHEETS 25	SHEET NO. 20
		DRAWN -	REVISED -		SCALE: 1" = 1'-0"	SHEET NO.	OF	SHEETS	STA.	TO STA.	CONTRACT NO. 66682		
		CHECKED -	REVISED -								ILLINOIS FED. AID PROJECT		
		DATE -	REVISED -								DEKALB & KENDALL		