

F.A.P. RTE.	SECTION	COUNTY	TOTAL SHEETS	SHEET NO.
796	(105)I-1	FORD	25	1
ILLINOIS PROJECT				

D-93-033-07
P-93-032-06

STATE OF ILLINOIS
DEPARTMENT OF TRANSPORTATION
DIVISION OF HIGHWAYS
**PROPOSED
HIGHWAY PLANS**

FAP 796 (IL 115)
SECTION (105)I-1
PROJECT: ACF-0796(013)
FORD COUNTY
C - 93 - 075 - 07

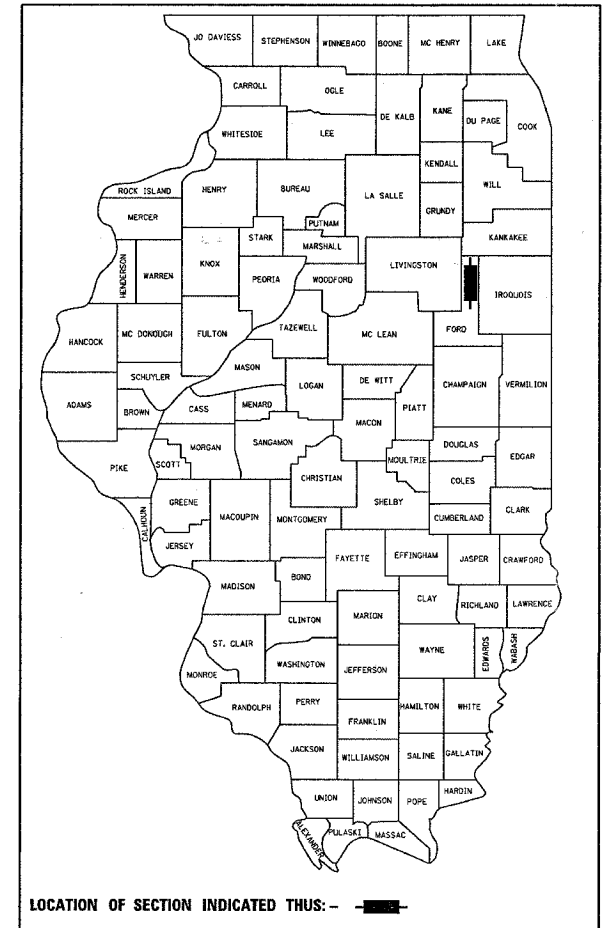
REPLACEMENT OF EXISTING CULVERT
WITH PRECAST BOX CULVERT
0.5 MILES SOUTH OF IL 116

INDEX OF SHEETS

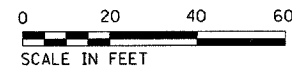
- 1 COVER SHEET
- 2 GENERAL NOTES
- 3 SUMMARY OF QUANTITIES
- 4 TYPICAL SECTIONS
- 5 SCHEDULES
- 6 TIE POINTS
- 7-8 PLAN AND PROFILE SHEETS
- 9-11 STAGE CONSTRUCTION AND TRAFFIC CONTROL
- 12 RIGHT OF WAY PLANS
- 13-17 CULVERT PLANS
- 18-20 DETAILS
- 21-25 CROSS SECTIONS

STANDARDS

- 000001-05 STANDARD SYMBOLS, ABBREVIATIONS AND PATTERNS
- 001001-01 AREAS OF REINFORCEMENT BARS
- 001006 DECIMAL OF AN INCH AND OF A FOOT
- 280001-04 TEMPORARY EROSION CONTROL SYSTEMS
- 630001-07 STEEL PLATE BEAM GUARDRAIL
- 635006-02 REFLECTOR AND TERMINAL MARKER PLACEMENT
- 635011-01 REFLECTOR MARKER AND MOUNTING DETAILS
- 666001 RIGHT-OF-WAY MARKERS
- 667101 PERMANENT SURVEY MARKERS
- 701001-01 OFF-ROAD OPERATIONS 2L, 2W, MORE THAN 4.5 m (15') AWAY
- 701006-02 OFF-ROAD OPERATIONS 2L, 2W, 4.5 m (15') TO 600 mm (24") FROM PAVEMENT EDGE
- 701311-02 LANE CLOSURE, 2L, 2W, MOVING OPERATIONS - DAY ONLY
- 701321-09 LANE CLOSURE, 2L, 2W, BRIDGE REPAIR WITH BARRIER
- 701326-02 LANE CLOSURE, 2L, 2W, PAVEMENT WIDENING, FOR SPEEDS ≥ 45 MPH
- 701901 TRAFFIC CONTROL DEVICES
- 704001-04 TEMPORARY CONCRETE BARRIER
- 780001-01 TYPICAL PAVEMENT MARKINGS
- 781001-02 TYPICAL APPLICATIONS RAISED REFLECTIVE PAVEMENT MARKERS



RURAL MINOR ARTERIAL
2008 ADT = 650
P.V. = 81.6% S.U. = 11.7% M.U. = 6.7%



FULL SIZE PLANS HAVE BEEN PREPARED USING STANDARD ENGINEERING SCALES, REDUCED SIZED PLANS WILL NOT CONFORM TO STANDARD SCALES, IN MAKING MEASUREMENTS ON REDUCED PLANS, THE ABOVE SCALES MAY BE USED.

MICROFILMED _____
REEL NUMBER _____
AWARDED _____
RESIDENT ENGINEER _____
AS BUILT CHANGES WERE MADE
ON THE FOLLOWING SHEETS _____

JULIE 1-800-892-0123

DISTRICT 3 NO. (815) 434-6131

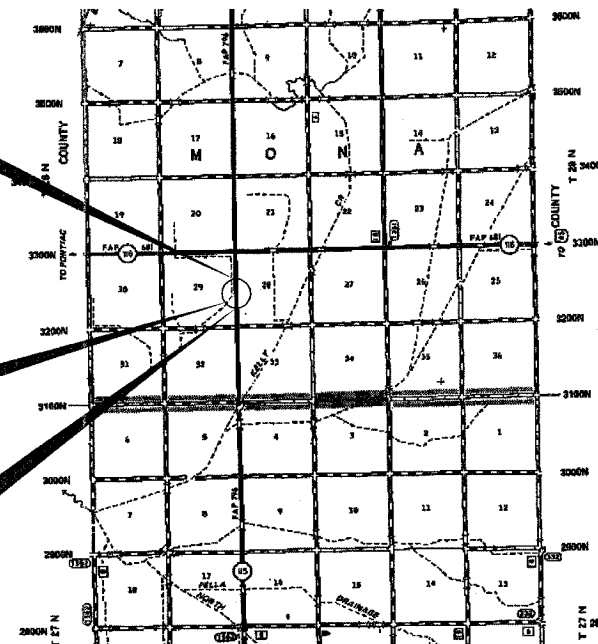
PROJECT ENGINEER: JOE KANNEL
UNIT CHIEF: MICHELE LINDEMANN
TOWNSHIP: MONA

CONTRACT NO. 66722

BEGIN IMPROVEMENT
STA 1496 + 90

SN 027-2550
STA 1499 + 59.60
12' X 5' PRECAST
CONCRETE BOX CULVERT

END IMPROVEMENT
STA 1502 + 10



LOCATION MAP
NOT TO SCALE

GROSS LENGTH = 520 FT. = .098 MI.
NET LENGTH = 520 FT. = .098 MI.

STATE OF ILLINOIS
DEPARTMENT OF TRANSPORTATION
DIVISION OF HIGHWAYS

SUBMITTED 10-22-2007

Harvey A. ...
DEPUTY DIRECTOR OF HIGHWAYS, REGION ENGINEER

December 7, 2007
Eric E. Haral
ENGINEER OF DESIGN AND ENVIRONMENT

December 7, 2007
Christine M. Reed
DIRECTOR OF HIGHWAYS, CHIEF ENGINEER

PRINTED BY THE AUTHORITY
OF THE STATE OF ILLINOIS