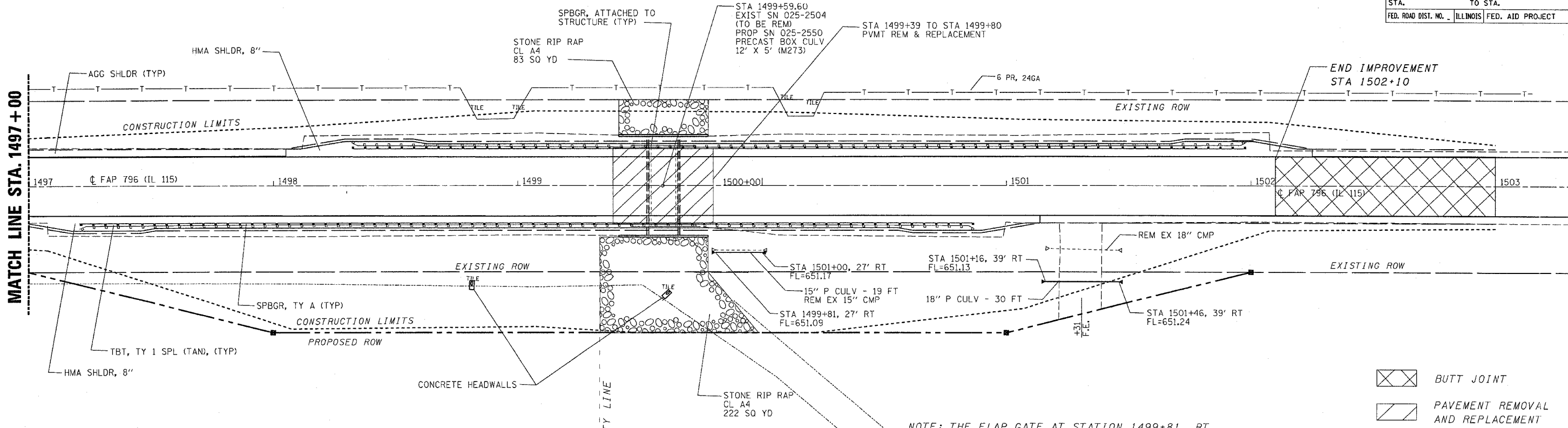
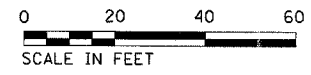


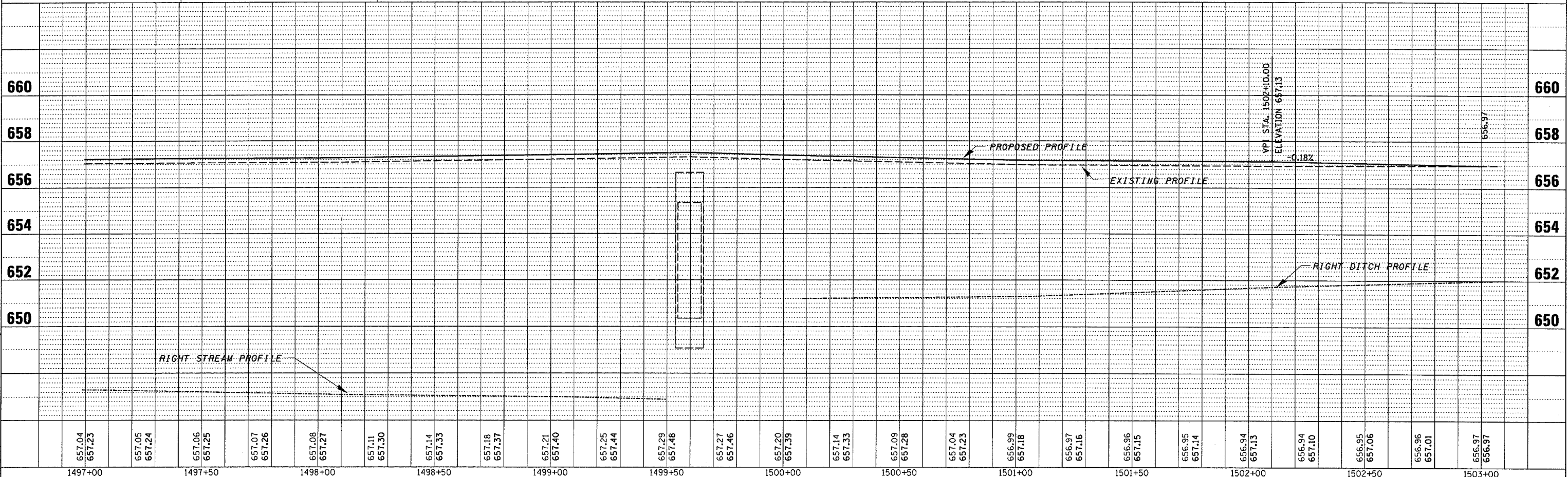
F.A.P. RTE.	SECTION	COUNTY	TOTAL SHEETS	SHEET NO.
796	(105)-1	FORD	25	8
STA. 1497 TO STA. 1503		FED. AID PROJECT		



NOTE: THE FLAP GATE AT STATION 1499+81, RT SHOULD BE REUSED IN THE NEW CMP TO PREVENT BACK FLOW. THIS WORK SHALL BE INCLUDED IN THE COST OF PIPE CULVERTS.



BM #1 STEEL FENCEPOST FLUSH W/ GROUND STA 1500+26.507 55.89' RT	BM #2 CHIS " " TOP S.E. CORNER STRUCTURE STA 1499+72.363 15.98' LT
-----------------------------------------------------------------------	--------------------------------------------------------------------------



657.04	657.23	657.05	657.24	657.06	657.25	657.07	657.26	657.08	657.27	657.11	657.30	657.14	657.33	657.18	657.37	657.21	657.40	657.25	657.44	657.29	657.48	657.27	657.46	657.20	657.39	657.14	657.33	657.09	657.28	657.04	657.23	656.99	657.18	656.97	657.16	656.96	657.15	656.95	657.14	656.94	657.13	656.94	657.10	656.95	657.06	656.96	657.01	656.97	656.97
1497+00	1497+50	1498+00	1498+50	1499+00	1499+50	1500+00	1500+50	1501+00	1501+50	1502+00	1502+50	1503+00																																					

DATE: _____ BY: _____
 SURVEYED: _____
 PLAN: _____
 NOTE BOOK: _____
 NO. _____

DATE: _____ BY: _____
 PROFILE: _____
 NOTE BOOK: _____
 NO. _____