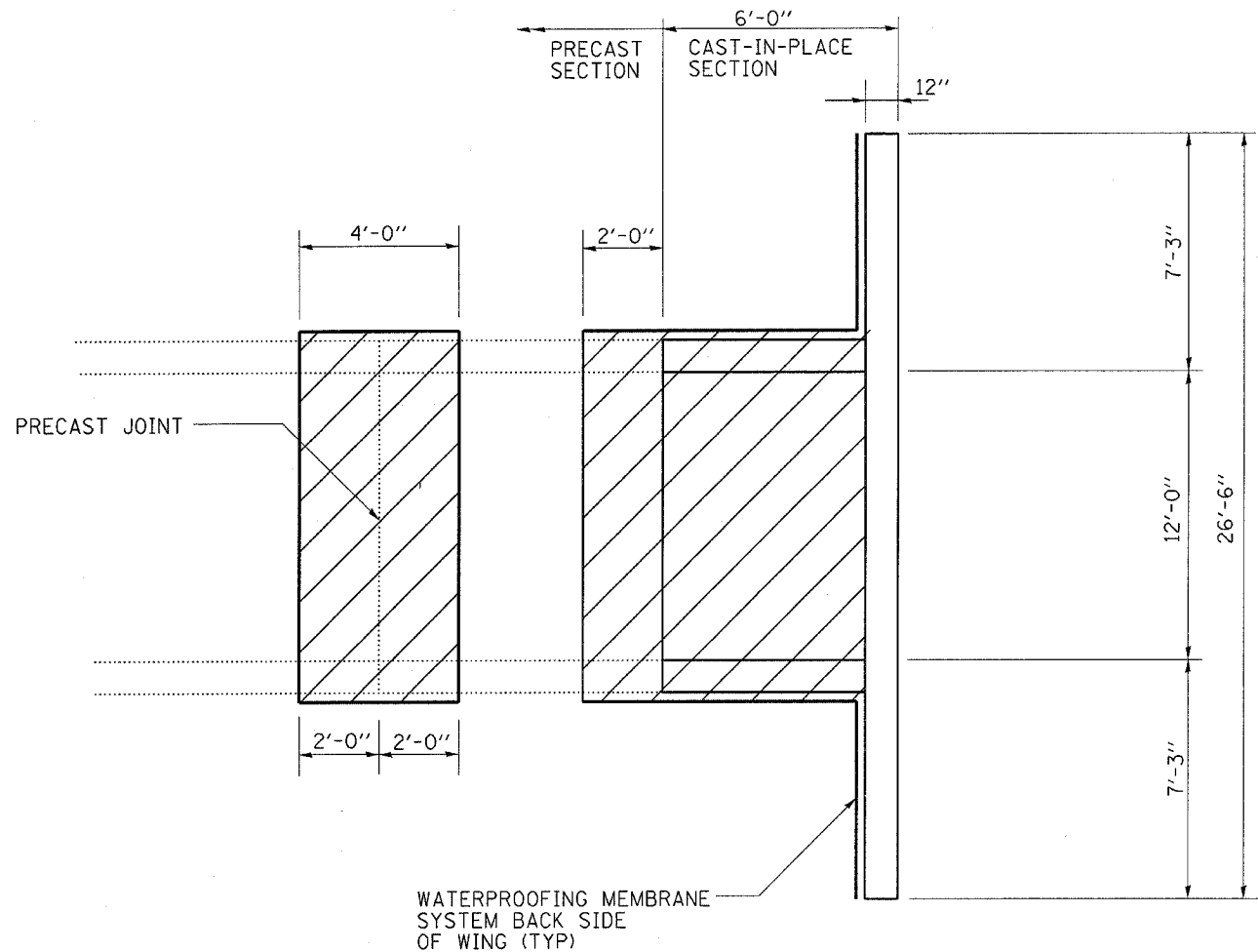
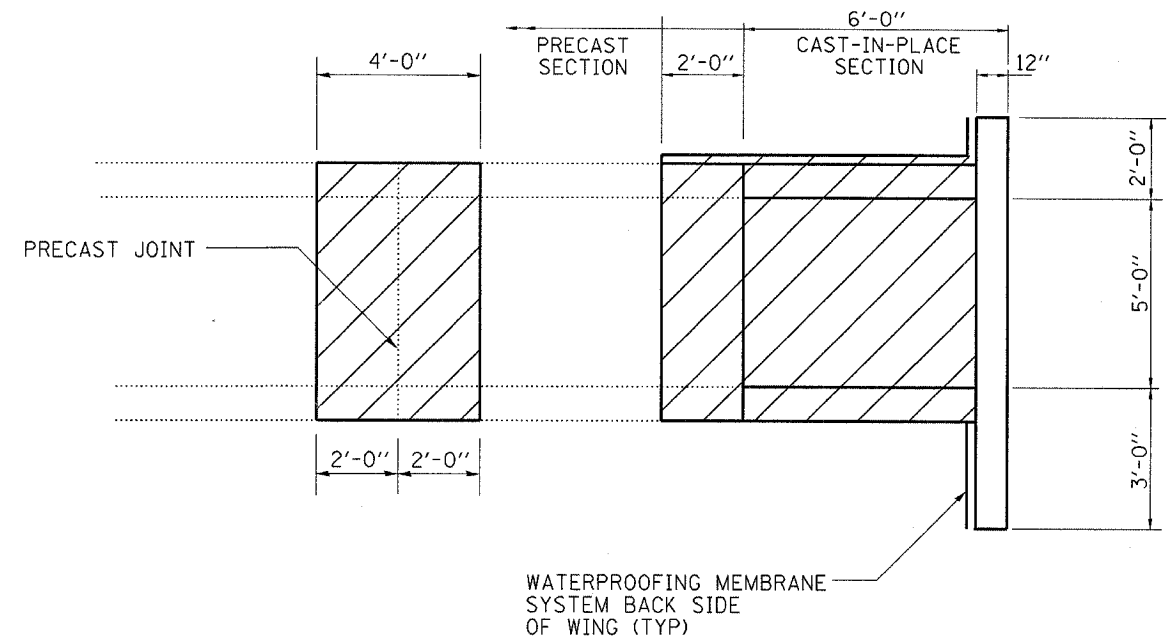


F.A.P. RTE.	SECTION	COUNTY	TOTAL SHEETS	SHEET NO.
796	(105)I-1	FORD	25	15
FED. ROAD DIST. NO.		ILLINOIS		



PLAN



SIDE ELEVATION

**BILL OF MATERIAL  
TOTAL - BOTH WINGS**

SHEET WATERPROOFING	SQ. YD.	37
MEMBRANE SYSTEM		

**BILL OF MATERIAL  
BOX CULVERT**

SHEET WATERPROOFING	SQ. YD.	81
MEMBRANE SYSTEM		

NOTES:

THE EXPOSED SURFACES AS INDICATED SHALL BE PROTECTED BY THE WATERPROOFING MEMBRANE AS PER THE MANUFACTURER'S RECOMENDATIONS.

A MANUFACTURER'S REPRESENTATIVE SHALL BE ON SITE DURING THE INSTALLATION OF THE WATERPROOFING MEMBRANE TO PROVIDE TECHNICAL SUPPORT WHEN REQUIRED. ALL COST INCURRED DUE TO THE ON-SITE REPRESENTATIVE SHALL NOT BE PAID FOR SEPARATELY BUT SHALL BE INCLUDED IN THE UNIT COST OF THE WATERPROOFING MEMBRANE WORK.

THE CONTRACTOR SHALL INSTALL THE WATERPROOFING MEMBRANE ACCORDING TO THE MANUFACTURER'S RECOMMENDATIONS, PLAN DETAILS AND AS DIRECTED BY THE ENGINEER.

REVISIONS	
NAME	DATE

ILLINOIS DEPARTMENT OF TRANSPORTATION  
**SHEET WATERPROOFING  
MEMBRANE DETAILS**  
FAP 796 (IL 115) SECTION (105)I-1  
FORD COUNTY  
STA. 1499+59.60  
S.N. 027-2550