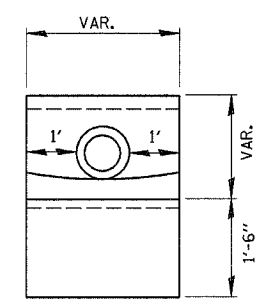
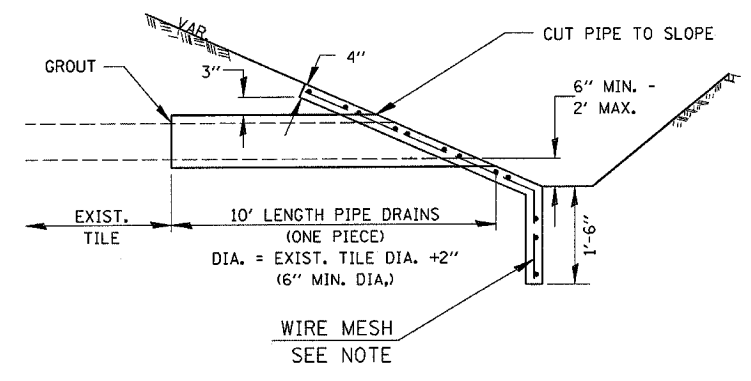
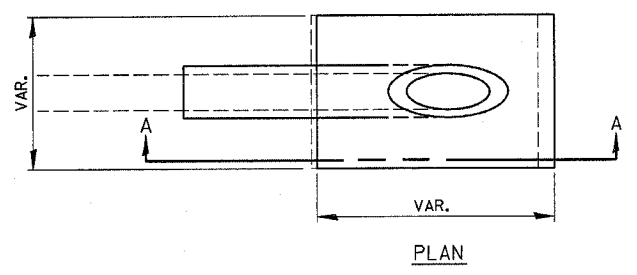


F.A.P. RTE.	SECTION	COUNTY	TOTAL SHEETS	SHEET NO.
796	(105)1-1	FORD	25	18
STA.		TO STA.		
FED. ROAD DIST. NO. .		ILLINOIS FED. AID PROJECT		

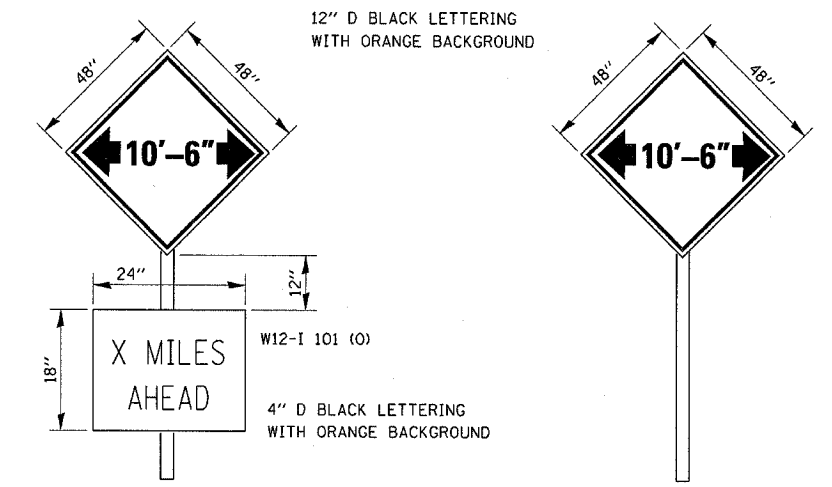
**NOTES**

1. ANY FIELD TILE OUTLET INTO A DITCH SHALL HAVE A HEADWALL BUILT IN ACCORDANCE WITH THIS DETAIL.
2. COST OF FURNISHING AND INSTALLING WIRE MESH SHALL BE INCLUDED IN THE CONTRACT UNIT PRICE PER CUBIC YARD FOR MISCELLANEOUS CONCRETE. WIRE MESH TO WEIGH NOT LESS THAN 58# PER 100 SQ. FT.



SECTION A-A

**PIPE DRAINS & CONCRETE HEADWALLS**



TO BE POST MOUNTED AS SHOWN ELSEWHERE IN THE PLANS.

THE ENGINEER WILL NOTIFY DISTRICT 3 BUREAU OF OPERATIONS 14 CALENDAR DAYS PRIOR TO INSTALLING ANY TRAFFIC CONTROL DEVICES THAT WILL RESTRICT THE PAVEMENT WIDTH.

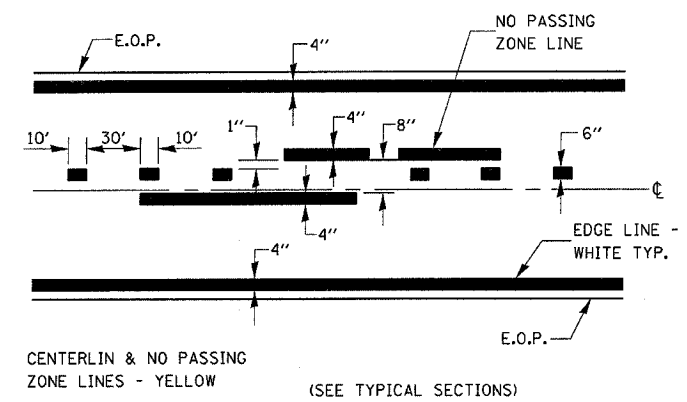
THE CONTRACTOR SHALL BE RESPONSIBLE FOR COORDINATING WITH THE ENGINEER TO MEET THIS REQUIREMENT.

COST OF SUPPLYING, INSTALLING, MAINTAINING AND REMOVING WIDTH RESTRICTION SIGNS SHALL BE INCLUDED IN THE COST OF THE TRAFFIC CONTROL AND PROTECTION PAY ITEMS.

**LOCATIONS**

SB IL 115 AT IL 116, 0.5 MILES AHEAD  
 NB IL 115 AT US 24, 9 MILES AHEAD

**WIDTH RESTRICTION SIGNING DETAILS**



**PAVEMENT MARKING**

Oct 22, 2007 - 07:47:10 AM c:\pcc\lects\ep03206\sheet5.dgn