

| F.A.I. RTE. | SECTION | COUNTY | TOTAL SHEETS | SHEET NO. |
|---------------------|---------|----------|--------------|-----------|
| 180 | 06-101 | BUREAU | 10 | 5 |
| FED. ROAD DIST. NO. | | ILLINOIS | | |

NOTES

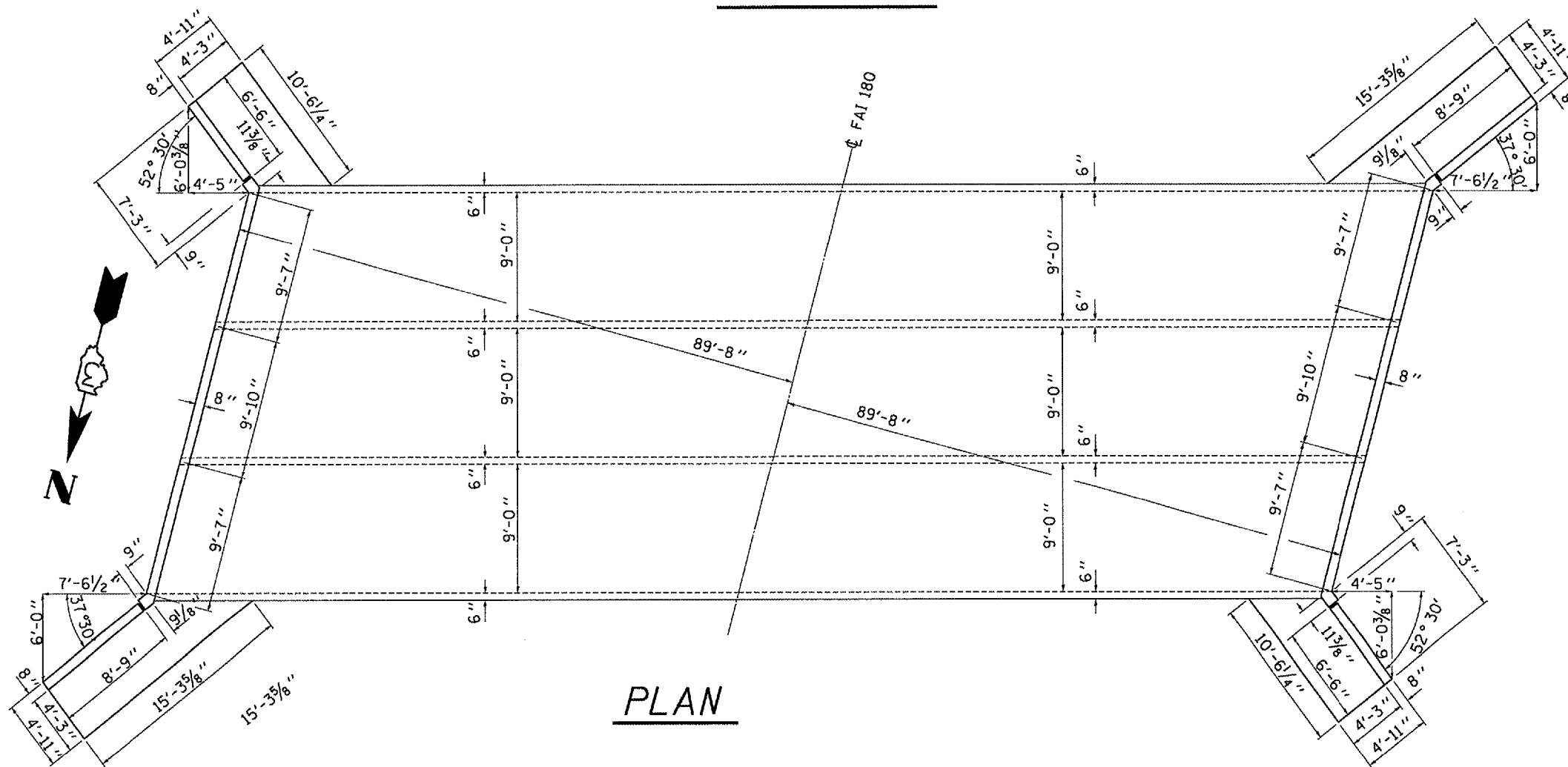
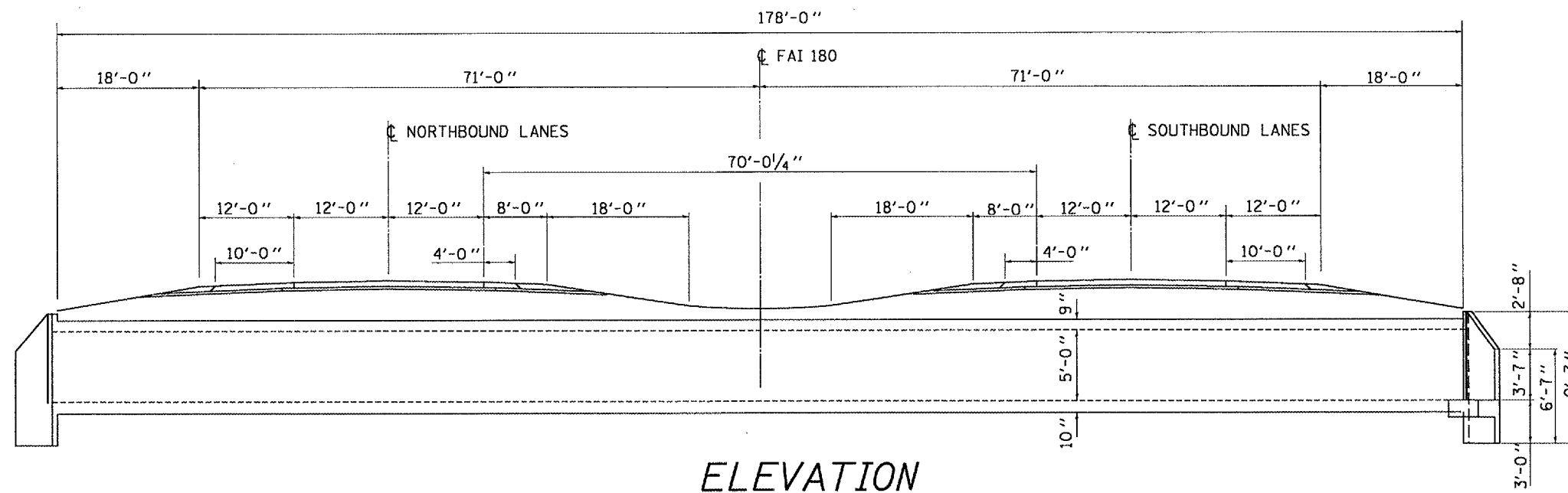
PLAN DIMENSIONS AND DETAILS RELATIVE TO EXISTING PLANS ARE SUBJECT TO ROUTINE VARIATIONS. THE CONTRACTOR SHALL FIELD VERIFY EXISTING DIMENSIONS AND DETAILS AFFECTING NEW CONSTRUCTION AND MAKE NECESSARY APPROVED ADJUSTMENTS PRIOR TO CONSTRUCTION OR ORDERING OF MATERIALS. SUCH VARIATIONS SHALL NOT BE CAUSE FOR ADDITIONAL COMPENSATION FOR A CHANGE IN THE SCOPE OF THE WORK, HOWEVER, THE CONTRACTOR WILL BE PAID FOR THE QUANTITY ACTUALLY FURNISHED BASED UPON THE UNIT BID PRICE FOR THE WORK.

THE COST OF ANY SAW CUTS MADE TO COMPLETE THE WORK AS DESCRIBED IN PLAN DETAILS, UNLESS OTHERWISE NOTED SHALL NOT BE PAID FOR SEPARATELY BUT SHALL BE INCLUDED WITH THE VARIOUS REMOVAL PAY ITEMS INVOLVED.

REINFORCEMENT BARS SHALL CONFORM TO THE REQUIREMENTS OF ASTM A 706 GR 60 (IL MODIFIED). SEE SPECIAL PROVISIONS.

REINFORCEMENT BARS DESIGNATED (E) SHALL BE EPOXY COATED.

EXISTING REINFORCEMENT BARS EXTENDING INTO REMOVAL AREA SHALL BE CLEANED, STRAIGHTENED AND INCORPORATED INTO THE NEW CONSTRUCTION. ANY REINFORCEMENT BARS THAT ARE DAMAGED DURING CONCRETE REMOVAL SHALL BE REPLACED WITH AN APPROVED BAR SPLICER OR ANCHORAGE SYSTEM. COST INCLUDED WITH CONCRETE REMOVAL.



TOTAL BILL OF MATERIALS

| ITEM | UNIT | LONG WING | SHORT WING | TOTAL |
|-----------------------|---------|-----------|------------|-------|
| TEMPORARY SHEET PILE | SQ. FT. | 414 | 338 | 752 |
| STRUCTURE EXCAVATION | CU. YD. | 28.9 | 21.7 | 50.6 |
| CONCRETE REMOVAL | CU. YD. | 1.1 | 0.8 | 1.9 |
| CONCRETE BOX CULVERTS | CU. YD. | 1.1 | 0.8 | 1.9 |
| REINFORCEMENT BARS | POUNDS | 110 | 90 | 200 |
| EPOXY COATED | | | | |
| SHEET WATERPROOFING | SQ. YD. | 16 | 11 | 27 |
| MEMBRANE SYSTEM | | | | |
| FURNISHED EXCAVATION | CU. YD. | 28.9 | 21.7 | 50.6 |

| REVISIONS | |
|-----------|------|
| NAME | DATE |
| | |
| | |
| | |
| | |
| | |
| | |

ILLINOIS DEPARTMENT OF TRANSPORTATION
PLAN AND ELEVATION
 FAI ROUTE 180 (I-180) SECTION 06-01
 STA. 157+00
 BUREAU COUNTY
 S.N. 006-2000

Date: 10/30/2007
 c:/projects/cmain08/cm316/details.dgn