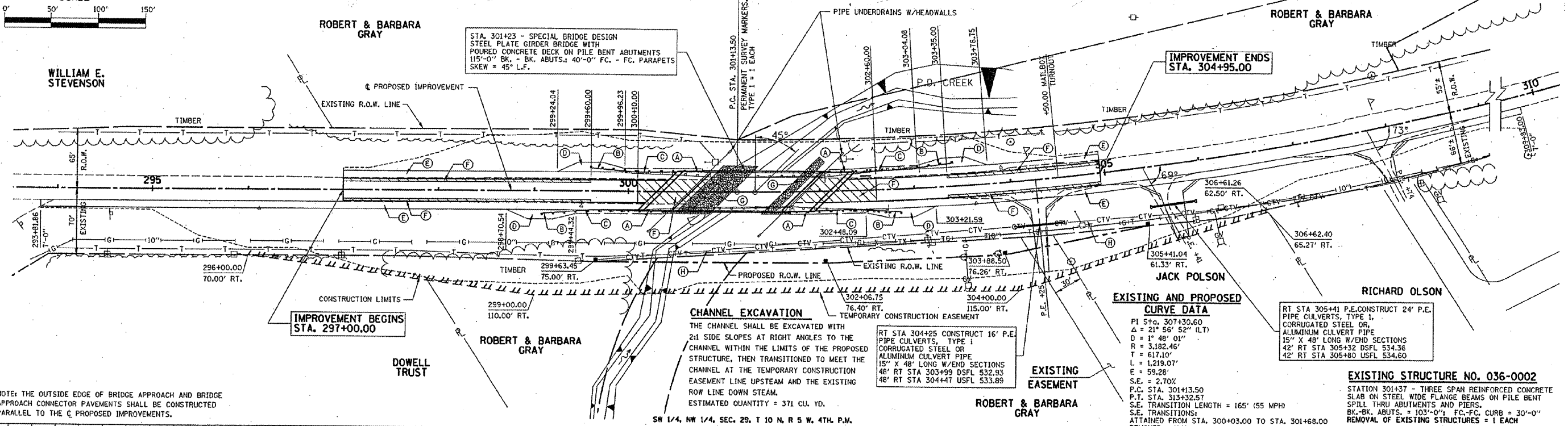
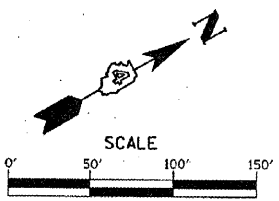


F.A.P. RTE.	SECTION	COUNTY	TOTAL SHEETS	SHE. NO.
313	(7B)YBR	HENDERSON	68	11
STA. 294+00		TO STA. 309+00		
FED. ROAD DIST. NO.		ILLINOIS FED. AID PROJECT		

SW 1/4, NW 1/4, SEC. 29, T 10 N, R 5 W, 4TH. P.M.

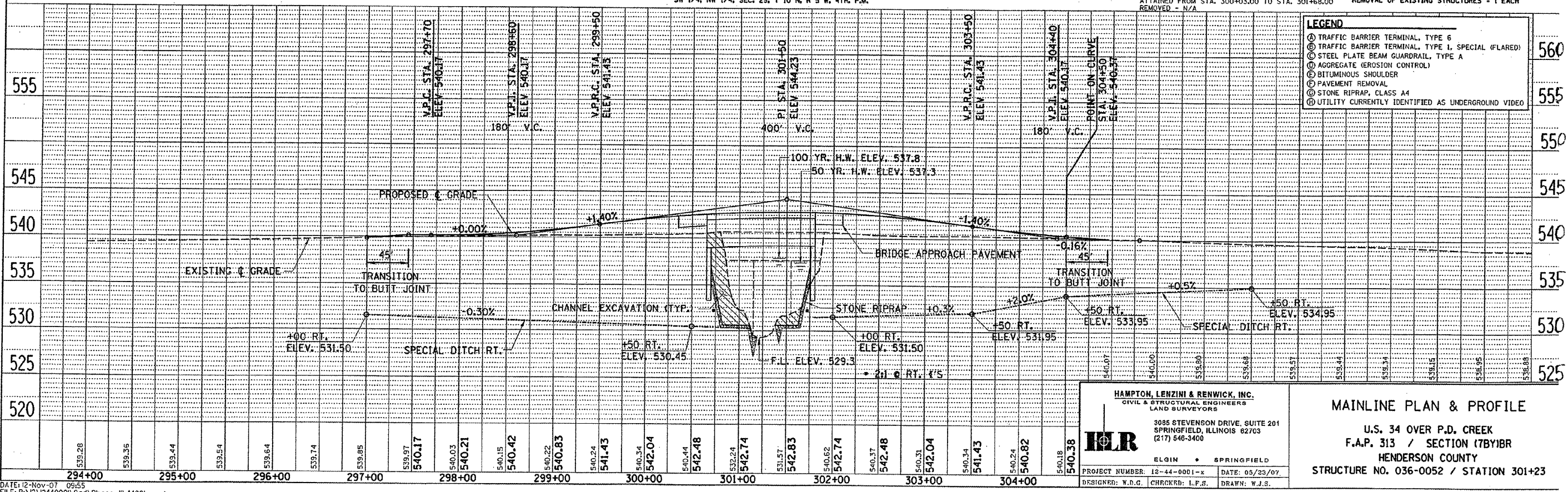


CHANNEL EXCAVATION
 THE CHANNEL SHALL BE EXCAVATED WITH 2:1 SIDE SLOPES AT RIGHT ANGLES TO THE CHANNEL WITHIN THE LIMITS OF THE PROPOSED STRUCTURE, THEN TRANSITIONED TO MEET THE CHANNEL AT THE TEMPORARY CONSTRUCTION EASEMENT LINE UPSTREAM AND THE EXISTING ROW LINE DOWN STREAM.
 ESTIMATED QUANTITY = 371 CU. YD.

EXISTING AND PROPOSED CURVE DATA
 PI STA. 307+30.60
 Δ = 21° 56' 52" (LT)
 D = 48' 01"
 R = 3,182.45'
 T = 617.10'
 L = 1,219.07'
 E = 59.28'
 S.E. = 2.70%
 P.C. STA. 301+13.50
 P.T. STA. 313+32.57
 S.E. TRANSITION LENGTH = 165' (55 MPH)
 S.E. TRANSITIONS:
 ATTAINED FROM STA. 300+03.00 TO STA. 301+68.00
 REMOVED - N/A

EXISTING STRUCTURE NO. 036-0002
 STATION 301+37 - THREE SPAN REINFORCED CONCRETE SLAB ON STEEL WIDE FLANGE BEAMS ON PILE BENT SPILL THRU ABUTMENTS AND PIERS.
 BK-BK. ABUTS. = 103'-0" FC-FC. CURB = 30'-0"
 REMOVAL OF EXISTING STRUCTURES = 1 EACH

NOTE: THE OUTSIDE EDGE OF BRIDGE APPROACH AND BRIDGE APPROACH CONNECTOR PAVEMENTS SHALL BE CONSTRUCTED PARALLEL TO THE PROPOSED IMPROVEMENTS.



LEGEND

- Ⓐ TRAFFIC BARRIER TERMINAL, TYPE 6
- Ⓑ TRAFFIC BARRIER TERMINAL, TYPE 1 SPECIAL (FLARED)
- Ⓒ STEEL PLATE BEAM GUARDRAIL, TYPE A
- Ⓓ AGGREGATE (EROSION CONTROL)
- Ⓔ BITUMINOUS SHOULDER
- Ⓕ PAVEMENT REMOVAL
- Ⓖ STONE RIPRAP, CLASS A4
- Ⓗ UTILITY CURRENTLY IDENTIFIED AS UNDERGROUND VIDEO

HAMPTON, LENZINI & RENWICK, INC.
 CIVIL & STRUCTURAL ENGINEERS
 LAND SURVEYORS
 3085 STEVENSON DRIVE, SUITE 201
 SPRINGFIELD, ILLINOIS 62703
 (217) 546-3400

ELGIN • SPRINGFIELD

PROJECT NUMBER: 12-44-0001-x DATE: 05/23/07
 DESIGNED: W.D.G. CHECKED: L.F.S. DRAWN: W.J.S.

MAINLINE PLAN & PROFILE

U.S. 34 OVER P.D. CREEK
 F.A.P. 313 / SECTION (7B)YBR
 HENDERSON COUNTY
 STRUCTURE NO. 036-0052 / STATION 301+23