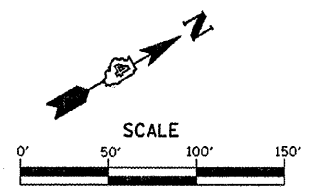


F.A.P. RTE.	SECTION	COUNTY	TOTAL SHEETS	SHEET NO.
313	(7BY)BR	HENDERSON	68	12
STA. 204+00		TO STA. 309+00		
FED. ROAD DIST. NO.		ILLINOIS		FED. AID PROJECT

SW 1/4, NW 1/4, SEC. 29, T 10 N, R 5 W, 4TH, P.M.



CURVE #1 DATA

PI STA. 94+74.95
 $\Delta = 10^\circ 08' 12.29''$ (RT)
 $D = 5^\circ 27' 24.27''$
 $R = 1,050.00'$
 $T = 93.13'$
 $L = 185.77'$
 $E = 4.12'$
 P.C. STA. 97+45.51
 P.T. STA. 98+83.70
 NO S.E.
 MATCH ADJACENT PAVEMENT 2.0% CROSS SLOPE

CURVE #8 DATA

PI STA. 103+69.22
 $\Delta = 16^\circ 17' 08.69''$ (LT)
 $D = 7^\circ 20' 44.21''$
 $R = 780.00'$
 $T = 111.61'$
 $L = 221.71'$
 $E = 7.94'$
 $S.E. = 3.00\%$
 P.C. STA. 102+57.62
 P.T. STA. 104+79.32
 S.E. TRANSITION LENGTH = 180' (45 M.P.H.)
 S.E. TRANSITIONS:
 ATTAIN FROM STA. 101+38.00 TO STA. 103+18.00
 REMOVE N/A

STA 93+81.82 R.A.=
 STA 293+81.82 M.L.

STA 93+81.82
 BEGIN RUNAROUND

WILLIAM E. STEVENSON

ROBERT & BARBARA GRAY

ROBERT & BARBARA GRAY

STA 110+36.43 RA.=
 STA 310+18.79 M.L.

STA 110+36.43
 END RUNAROUND

RICHARD OLSON

JACK POLSON

DOWELL TRUST

LEGEND

- ① 2'-0" STUB RT. STA. 93+81.82
- ② 2'-0" STUB RT. STA. 110+00.00

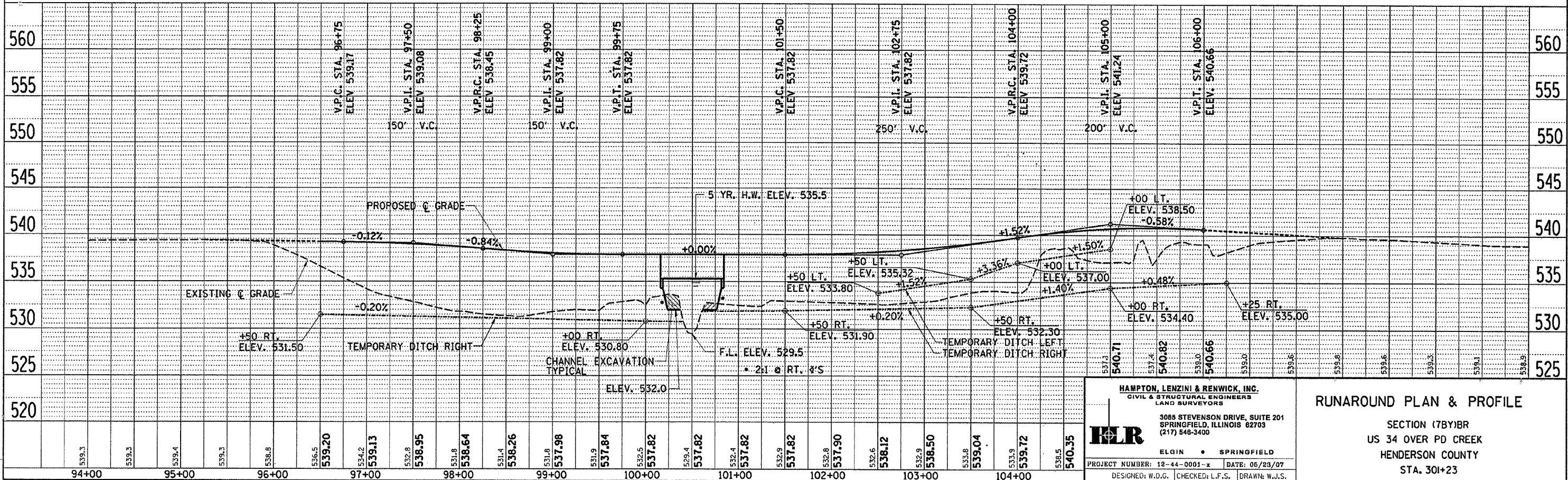
STA. 100+80.00 - TEMPORARY BRIDGE COMPLETE
 SINGLE SPAN P.C. DECK BEAMS (27" DEPTH)
 68'-0" BK-BK, ABUTS. 28'-0" FC - FC, RAIL
 SKEW = 45° L.F., HS 20-44 LOADING
 MIN. WATERWAY OPENING = 50 FT
 MIN. LOW CLEARANCE = 535.5 FT.

ROBERT & BARBARA GRAY

SW 1/4, NW 1/4, SEC. 29, T 10 N, R 5 W, 4TH, P.M.

CHANNEL EXCAVATION

THE CHANNEL AT THE TEMPORARY BRIDGE SHALL BE EXCAVATED WITH 2:1 SIDE SLOPES AT RIGHT ANGLES TO THE CHANNEL WITHIN THE LIMITS OF THE PROPOSED ABUTMENTS, THEN TRANSITIONED TO MEET THE EXISTING CHANNEL IN 20'-0", ESTIMATED QUANTITY = 62 CU. YD.



HAMPTON, LENZINI & RENWICK, INC.
 CIVIL & STRUCTURAL ENGINEERS
 LAND SURVEYORS
 3085 STEVENSON DRIVE, SUITE 201
 SPRINGFIELD, ILLINOIS 62703
 (217) 546-3400
 ELGIN • SPRINGFIELD
 PROJECT NUMBER: 12-44-0001-x DATE: 06/28/07
 DESIGNED: W.D.G. CHECKED: L.F.S. DRAWN: W.J.S.

RUNAROUND PLAN & PROFILE

SECTION (7BY)BR
 US 34 OVER PD CREEK
 HENDERSON COUNTY
 STA. 301+23