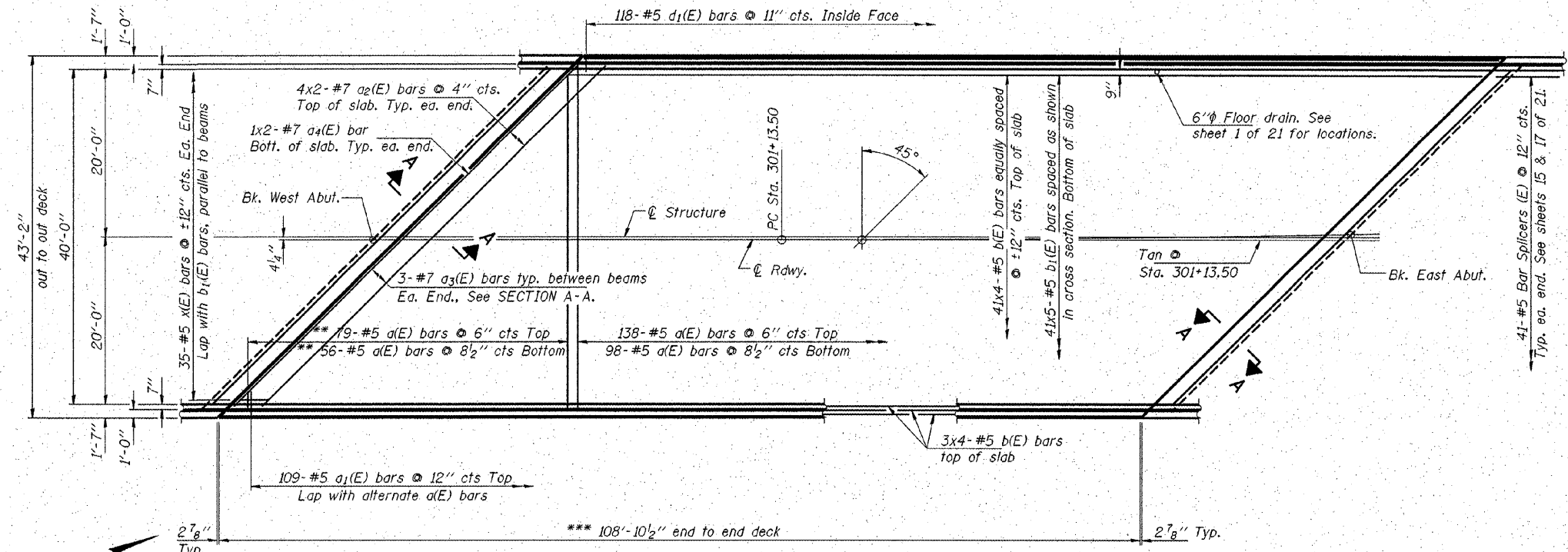


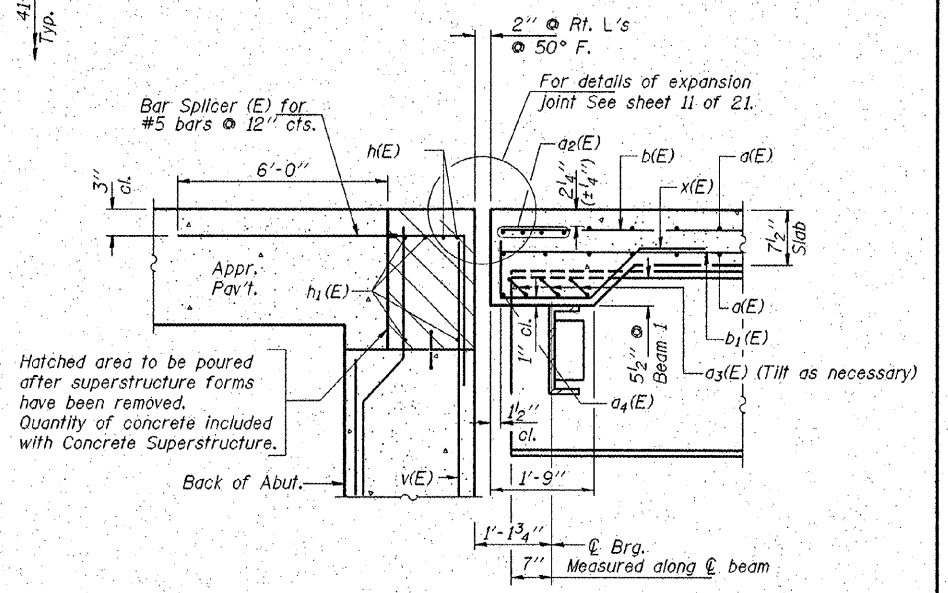
ROUTE NO.	SECTION	COUNTY	TOTAL SHEETS	SHEET NO.	SHEET NO. 7
FAP 313	(7B)BR	HENDERSON	68	21	21 SHEETS
FED. ROAD DIST. NO. 7		ILLINOIS	FED. AID PROJECT		
Contract No. 68149					



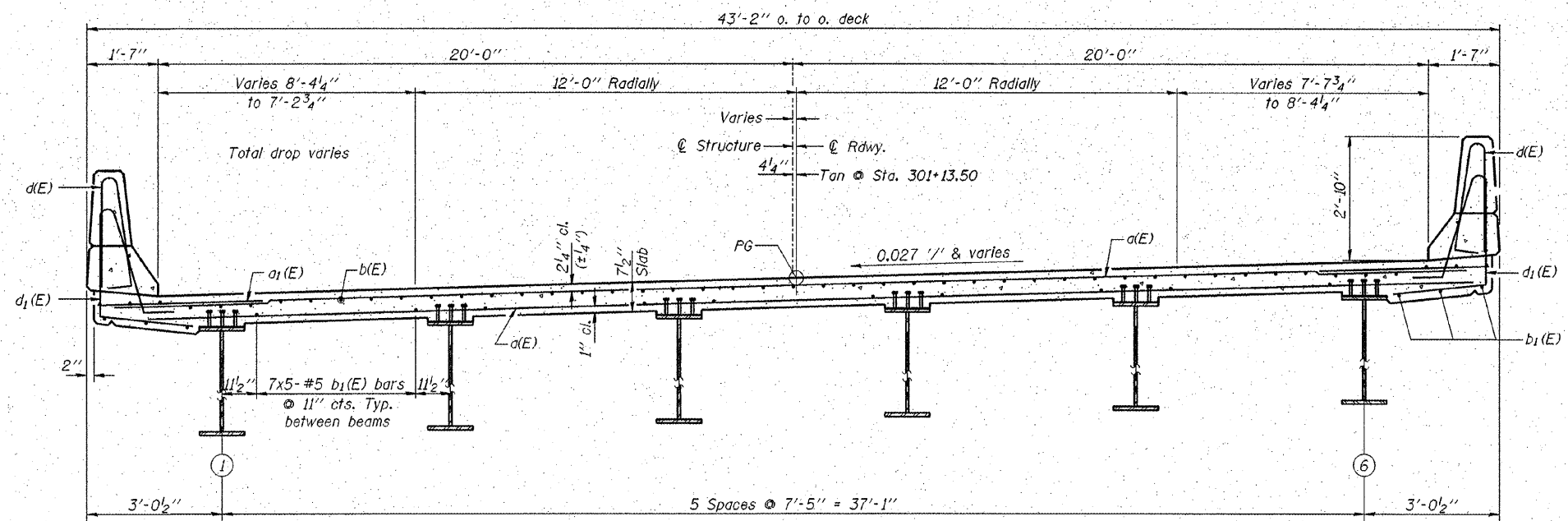
PLAN

** Order a(E) bars full length. Cut to fit skew and use remainder of bars in other end.

*** Along ϕ Structure



SECTION A-A



CROSS SECTION
(Looking East)

MIN. BAR LAPS
#5 bar = 2'-2"

Notes: See sheet 8 of 21 for superstructure details and Bill of Material.
Reinforcement bars designated (E) shall be epoxy coated.
Bars indicated thus 41 x 4-#5 etc. indicates 41 lines of bars with 4 lengths per line.
See sheet 8 of 21 for parapet reinforcement.

HAMPTON, LENZINI & RENWICK, INC.
CIVIL & STRUCTURAL ENGINEERS
LAND SURVEYORS
HLR
3085 STEVENSON DRIVE, SUITE 201
SPRINGFIELD, ILLINOIS 62703
(217) 546-3400
ELGIN • SPRINGFIELD
PROJECT NUMBER: 12 44 0001 x DATE: 11/19/07
DESIGNED: D.A.B. CHECKED: M.G.B. DRAWN: baliva

SUPERSTRUCTURE
U.S. 34 OVER P.D. CREEK
F.A.P. 313 / SECTION (7B)BR
HENDERSON COUNTY
STRUCTURE NO. 036-0052 / STATION 301+23