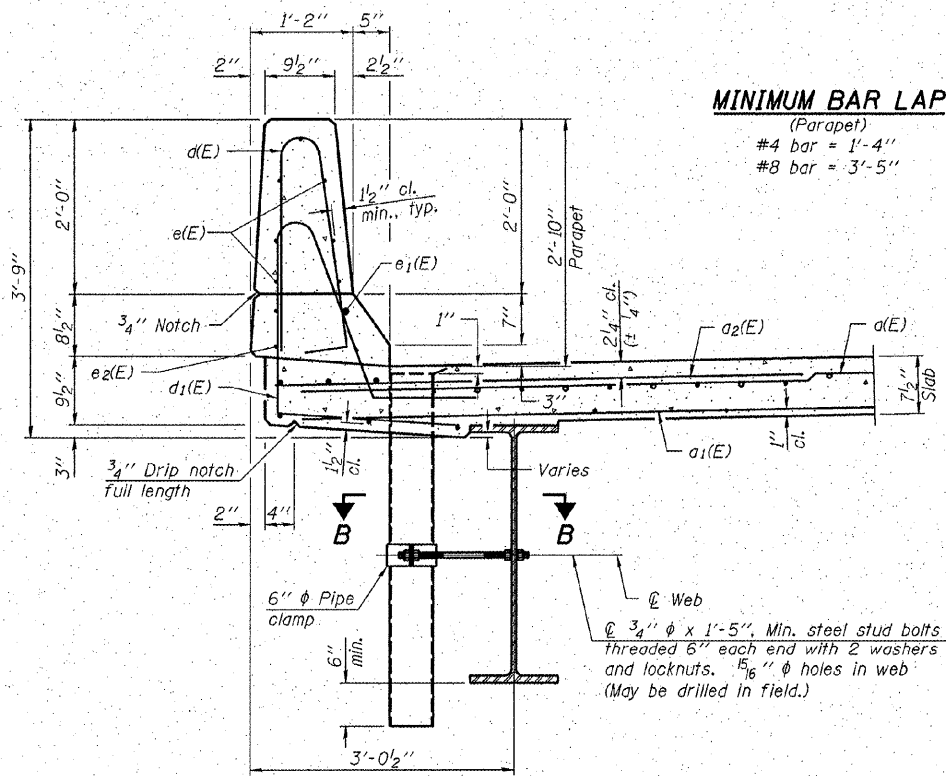
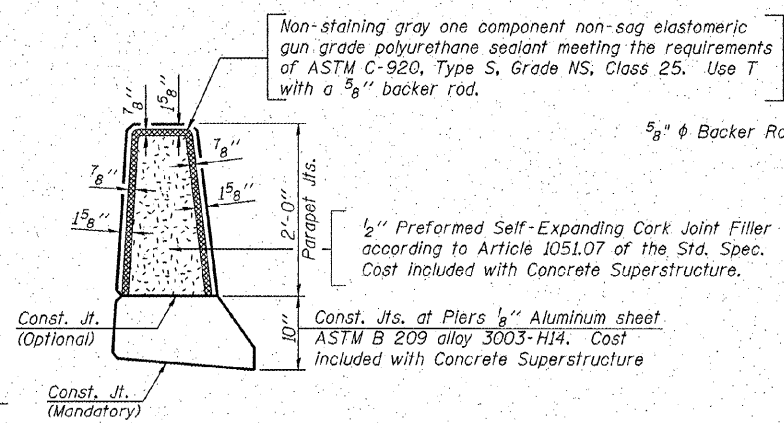


INSIDE ELEVATION OF PARAPETS
* Along C Structure

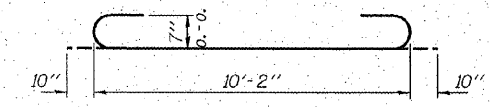


SECTION THRU PARAPET

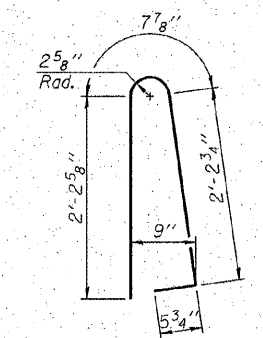


PARAPET JOINT DETAILS

Notes:
The exterior surfaces of the floor drains shall be painted with the finish coat as specified in the special provisions for Cleaning and Painting New Metal Structures. The exterior surfaces of the drains shall be cleaned according to Steel Structures Painting Council's Spec. SSPC-SPI prior to painting. Fiberglass pipe shall conform to ASTM D 2996, with short-time rupture strength hoop tensile stress of 30,000 p.s.i. minimum.

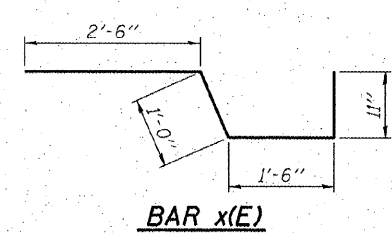
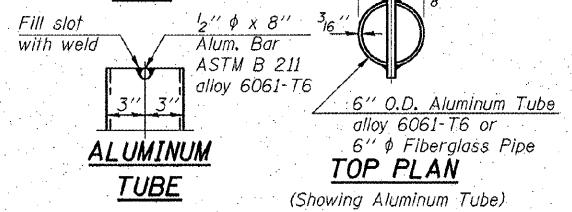
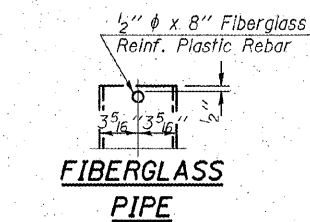
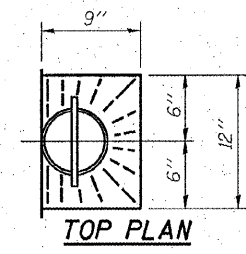
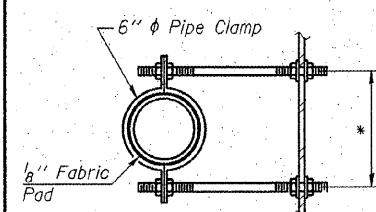
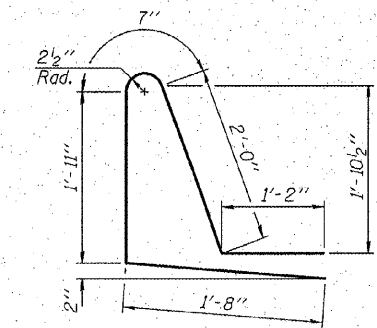


MIN. BAR LAPS
#4 bar = 1'-8"
#9 bar = 4'-5"



SUPERSTRUCTURE BILL OF MATERIAL

Bar	No.	Size	Length	Shape
a(E)	371	#5	41'-2"	—
a1(E)	218	#6	4'-0"	—
a2(E)	16	#8	30'-3"	—
a3(E)	30	#7	11'-10"	—
a4(E)	4	#7	30'-3"	—
b(E)	188	#5	29'-0"	—
b1(E)	205	#5	23'-9"	—
d(E)	236	#5	5'-7"	—
d1(E)	236	#5	7'-4"	—
e(E)	84	#4	17'-10"	—
e1(E)	16	#8	29'-9"	—
e2(E)	10	#5	22'-9"	—
x(E)	70	#5	5'-11"	—
Name Plates	Each		1	
Reinforcement Bars, Epoxy Coated	Pound		36,400	
Concrete Superstructure	Cu. Yds.		154.4	
Bar Splicers	Each		82	



HAMPTON, LENZINI & RENWICK, INC.
CIVIL & STRUCTURAL ENGINEERS
LAND SURVEYORS

3085 STEVENSON DRIVE, SUITE 201
SPRINGFIELD, ILLINOIS 62703
(217) 546-3400

ELGIN • SPRINGFIELD

PROJECT NUMBER: 12-44-0001 x DATE: 11/19/07
DESIGNER: D.A.B. CHECKER: M.G.B. DRAWN: ballva

SUPERSTRUCTURE DETAILS

U.S. 34 OVER P.D. CREEK
F.A.P. 313 / SECTION (7B)/BR
HENDERSON COUNTY

STRUCTURE NO. 036-0052 / STATION 301+23