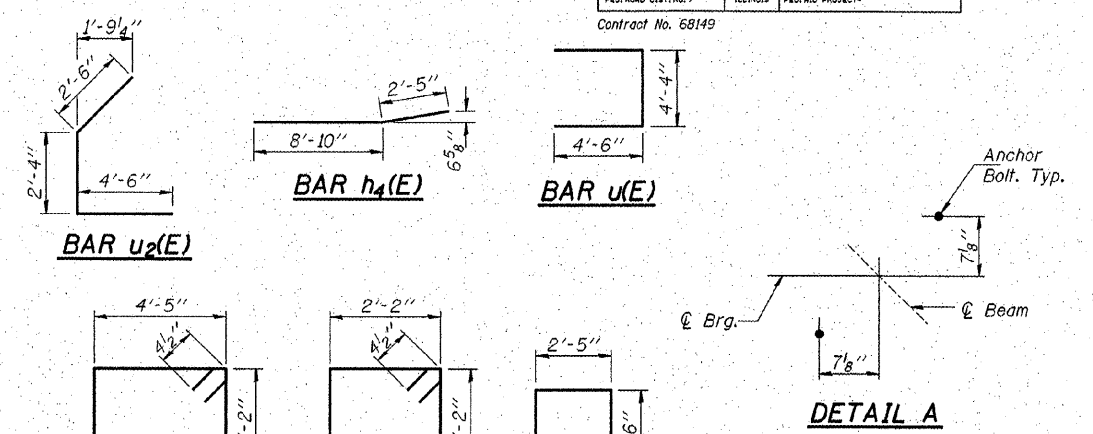
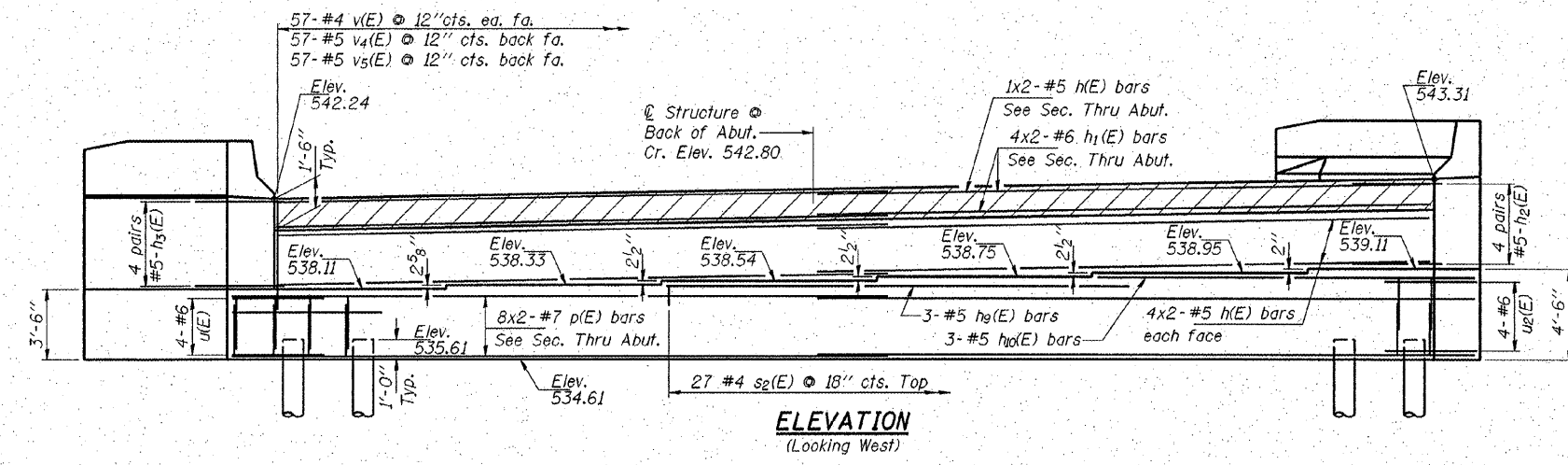
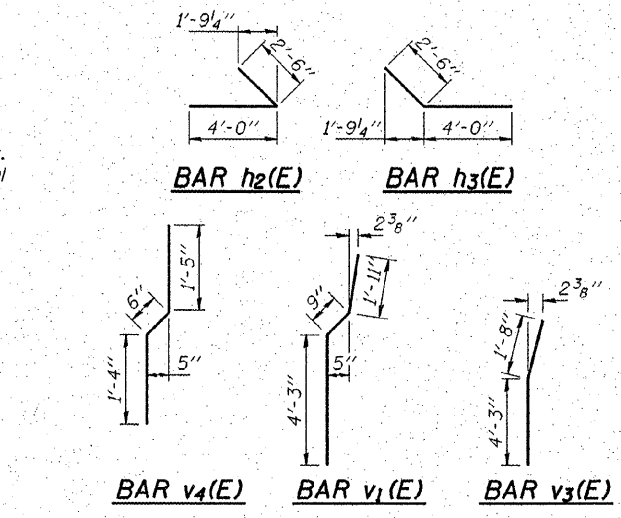
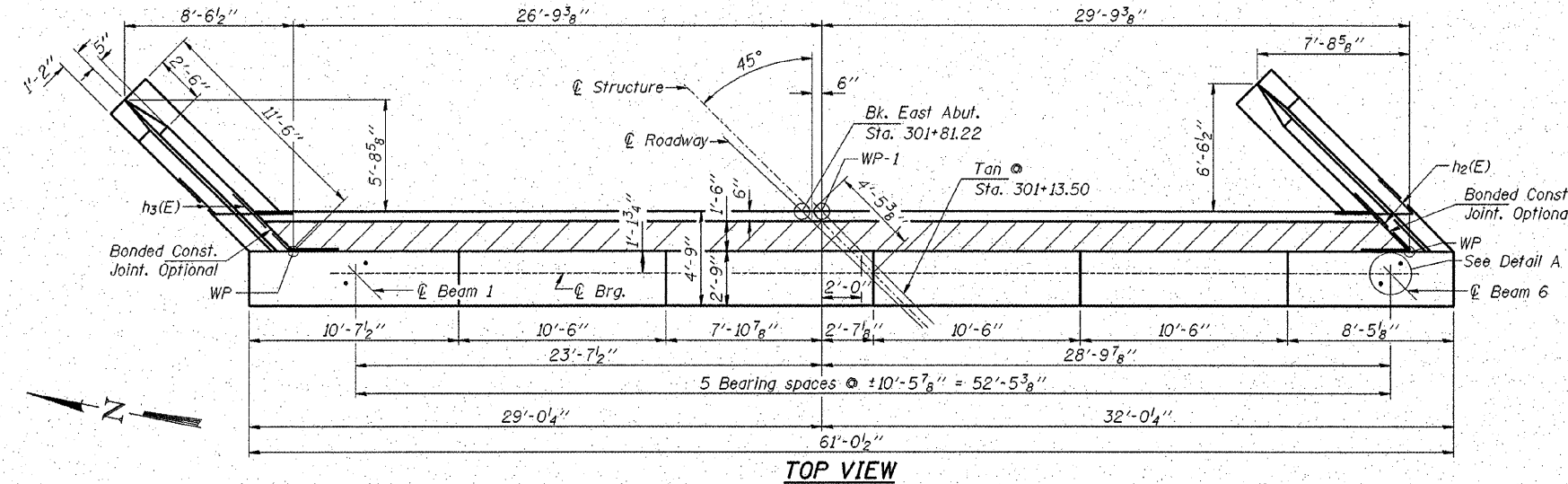


Contract No. 68149



**EAST ABUTMENT
BILL OF MATERIAL**

| Bar | No. | Size | Length | Shape |
|------------------------------------------|-----|------|---------|-------|
| h(E) | 18 | #5 | 29'-6" | — |
| h1(E) | 8 | #6 | 29'-9" | — |
| h2(E) | 8 | #5 | 6'-6" | — |
| h3(E) | 8 | #5 | 6'-6" | — |
| h4(E) | 14 | #4 | 11'-3" | — |
| h5(E) | 4 | #4 | 11'-2" | — |
| h6(E) | 9 | #4 | 12'-9" | — |
| h7(E) | 9 | #4 | 9'-7" | — |
| h8(E) | 3 | #5 | 23'-0" | — |
| h9(E) | 3 | #5 | 18'-7" | — |
| n(E) | 20 | #6 | 12'-6" | — |
| n1(E) | 12 | #6 | 6'-3" | — |
| p(E) | 16 | #7 | 32'-3" | — |
| p1(E) | 12 | #7 | 12'-9" | — |
| s(E) | 52 | #4 | 15'-11" | — |
| s1(E) | 26 | #4 | 9'-5" | — |
| s2(E) | 27 | #4 | 5'-5" | — |
| u(E) | 4 | #6 | 13'-4" | — |
| u2(E) | 4 | #6 | 9'-4" | — |
| v(E) | 114 | #4 | 4'-0" | — |
| v1(E) | 20 | #6 | 6'-11" | — |
| v2(E) | 24 | #6 | 6'-10" | — |
| v3(E) | 6 | #6 | 5'-11" | — |
| v4(E) | 57 | #5 | 3'-3" | — |
| v5(E) | 57 | #5 | 2'-6" | — |
| Structure Excavation | | | Cu. Yd. | 174 |
| Concrete Structures | | | Cu. Yd. | 64.4 |
| Reinforcement Bars, Epoxy Coated | | | Pound | 5,380 |
| Furnishing Metal Shell Piles 12" x 0.25" | | | Foot | 1,188 |
| Test Pile Metal Shells | | | Each | 1 |
| Driving Piles | | | Foot | 1,188 |



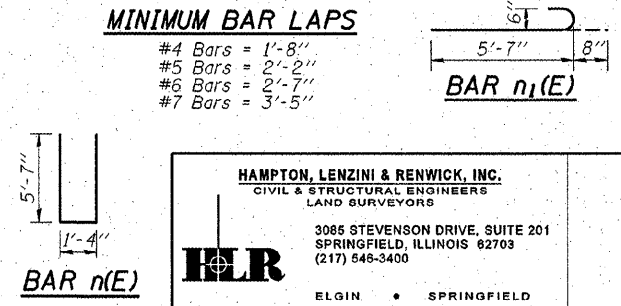
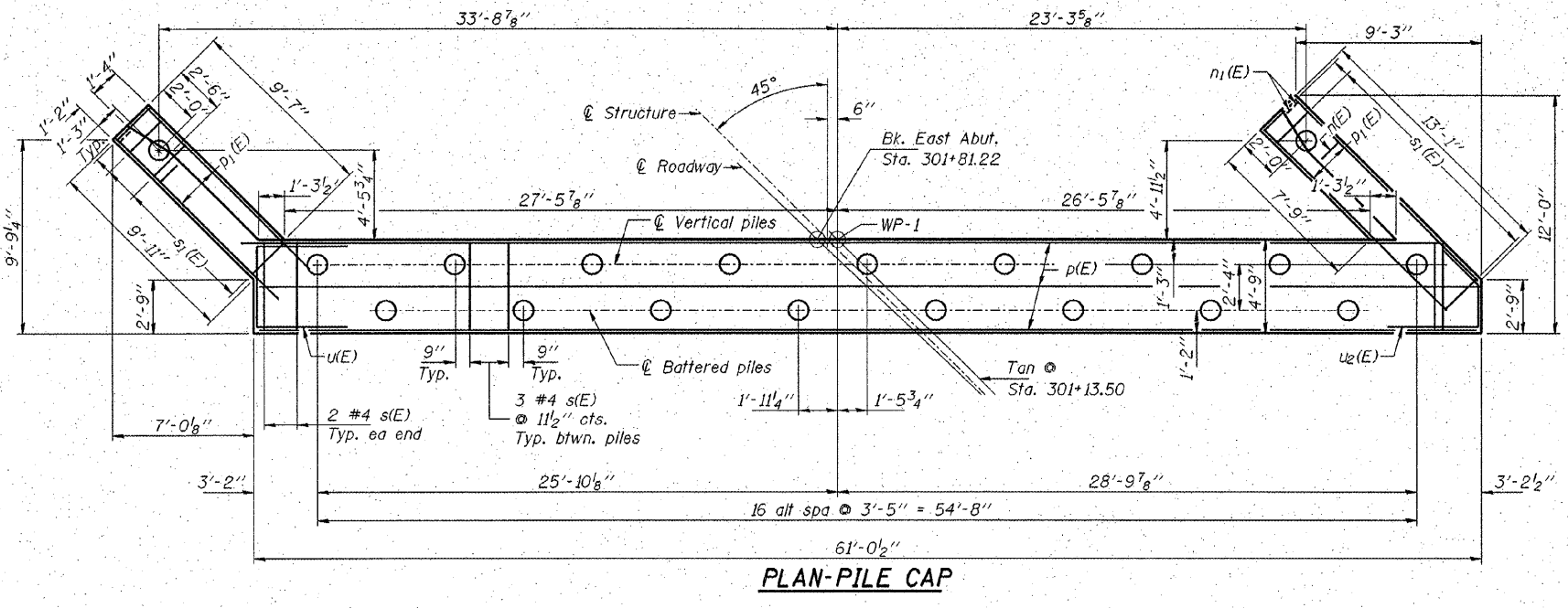
PILE DATA

Type: 12" Metal Shell, w/.25" walls
 No. Req'd: 19
 Allowable Resistance Available: 90 Kips/Pile
 Nominal Req'd Bearing: 270 Kips/Pile
 Est. Lengths: 66 Ft/Pile

Notes: The test piles shall be driven to 110 percent of the Nominal Required Bearing Indicated in the pile data information.
 * Includes one test piles to be driven in a permanent location, at the East Abutment.

MINIMUM BAR LAPS

#4 Bars = 1'-8"
 #5 Bars = 2'-2"
 #6 Bars = 2'-7"
 #7 Bars = 3'-5"



HAMPTON, LENZINI & RENWICK, INC.
 CIVIL & STRUCTURAL ENGINEERS
 LAND SURVEYORS

3085 STEVENSON DRIVE, SUITE 201
 SPRINGFIELD, ILLINOIS 62703
 (217) 548-3400

ELGIN • SPRINGFIELD

PROJECT NUMBER: 12-44-0001-x DATE: 08/24/07
 DESIGNER: D.A.H. CHECKER: M.G.H. DRAWN: balliva

EAST ABUTMENT
 U.S. 34 OVER P.D. CREEK
 F.A.P. 313 / SECTION (7BY)BR
 HENDERSON COUNTY
 STRUCTURE NO. 036-0052 / STATION 301+23