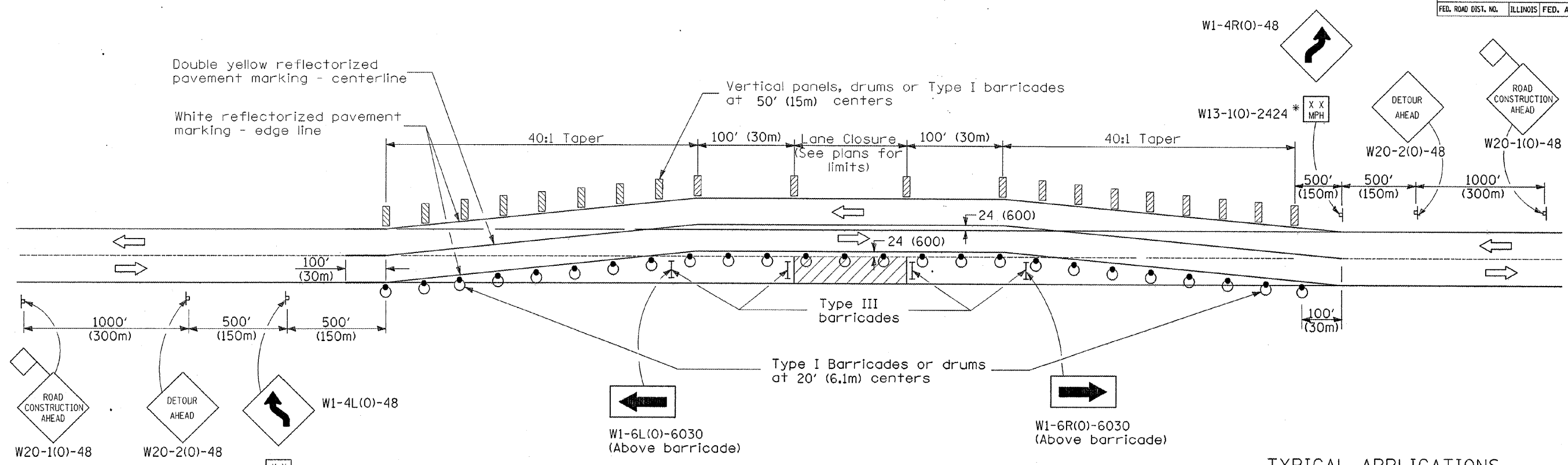


F.A.P. RTE.	SECTION	COUNTY	TOTAL SHEETS	SHEET NO.
313	(7BY)R	HENDERSON	68	48
STA.		TO STA.		
FED. ROAD DIST. NO.		ILLINOIS FED. AID PROJECT		

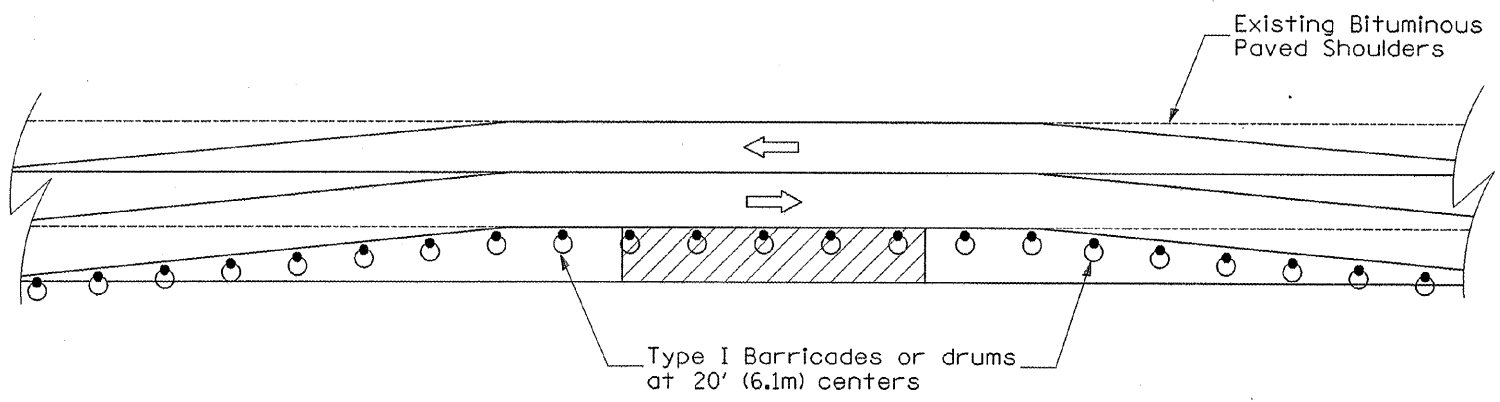


TYPICAL APPLICATIONS

1. Connection of relocated pavements to existing pavements.
2. Emergency pavement repairs.

GENERAL NOTES

1. This Standard is used where at any time, any vehicle, equipment, workers or their activities require the closure of a single lane and a temporary run-around is constructed adjacent to the existing pavement.
- \*2. The advisory speed to be shown below the reverse curve (turn) signs shall be determined at the site and approved by the Engineer.
3. Type III reflectorized pavement marking tape shall be used for marking the edge lines and centerline on the existing pavement. Type III reflectorized pavement marking tape shall also be used for markings on the paved run-arounds.



SYMBOLS

- Work area
- Sign
- 18x18 (450x450) Minimum orange flag
- Barricade or drum with monodirectional steady burning light
- Vertical panel, drum or Type I barricade
- Type III barricade

OPTIONAL TREATMENT WITH EXISTING BITUMINOUS PAVED SHOULDERS

All dimensions are in inches (millimeters) unless otherwise noted.

DATE	REVISIONS	BY
1-1-97	RENUM. F-6.01, NEW REVISION BOX, REVISED TITLE BOX	T.P.
10-16-06	REVISED TO 2007 SPEC.	M.A.

ILLINOIS DEPARTMENT OF TRANSPORTATION  
 DISTRICT CADD STANDARD  
 LANE CLOSURE, 2L, 2W WITH RUNAROUND ADJACENT TO EXISTING PAVEMENT FOR SPEEDS ≥ 45MPH (STANDARD 701331, SPECIAL)  
 CADD STANDARD 701331-04 DRAWN BY CADD  
 SCALE: NOT DRAWN TO SCALE CHECKED BY

DESIGNER NOTES:  
 1. Include State Standard 701331.  
 2. Review treatments with District Traffic Control Engineer (Technician).  
 3. Include District Special Provision.