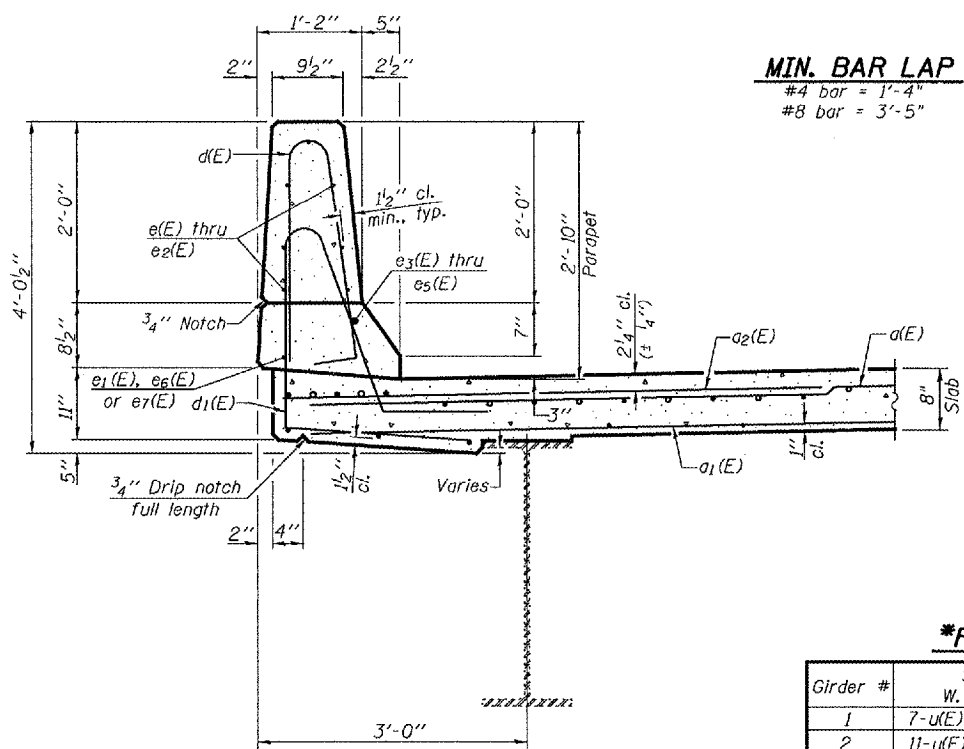
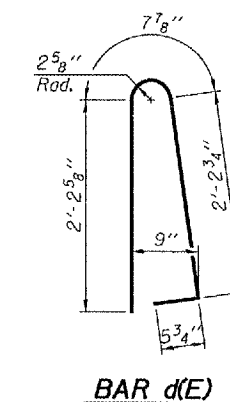
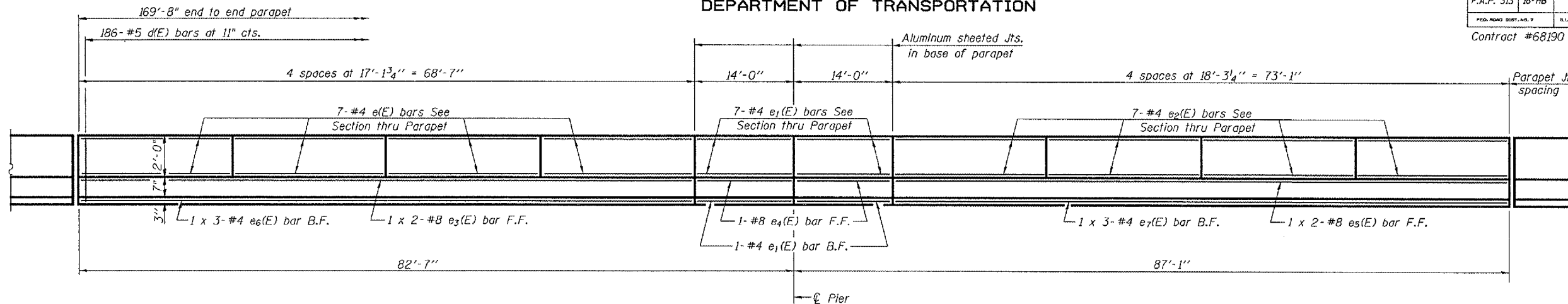


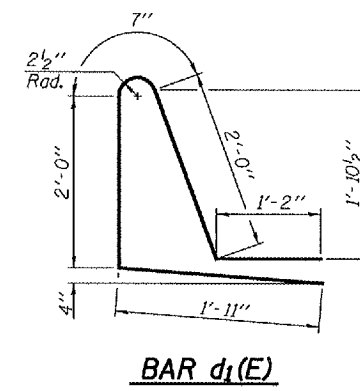
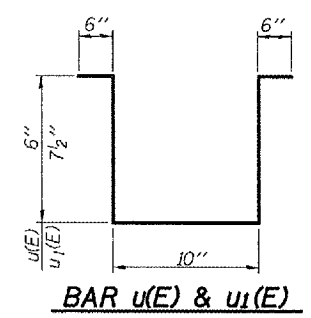
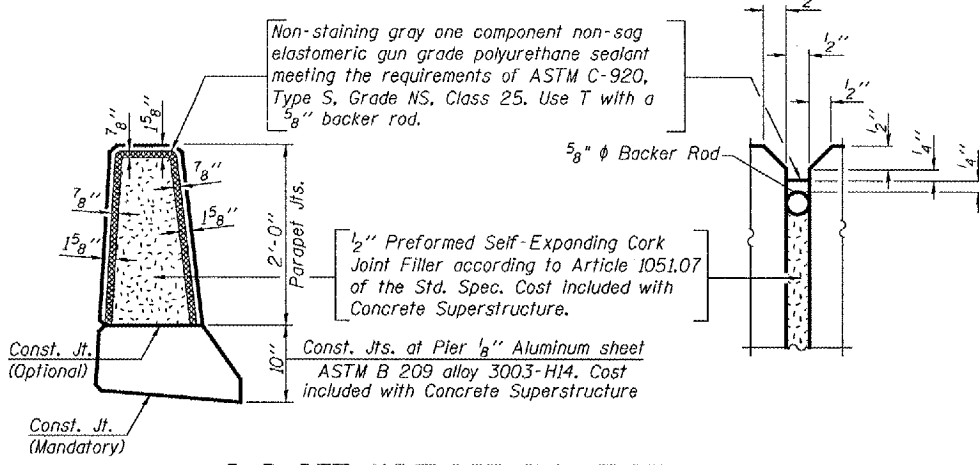
STATE OF ILLINOIS
DEPARTMENT OF TRANSPORTATION

ROUTE NO.	SECTION	COUNTY	SHEET	SHEET	SHEET NO. 10
F.A.P. 313	18-HB	KNOX	70	33	23 SHEETS
FED. ROAD DIST. NO. 7		ILLINOIS	FED. AID PROJECT		
Contract #68190					



MIN. BAR LAP
#4 bar = 1'-4"
#8 bar = 3'-5"

INSIDE ELEVATION OF PARAPET
(North Parapet shown. The South Parapet is similar)



SUPERSTRUCTURE BILL OF MATERIAL

Bar No.	Size	Length	Shape
a(E)	240	#5 31'-4"	—
a1(E)	205	#5 29'-10"	—
a2(E)	478	#6 6'-0"	—
a3(E)	4	#5 30'-0"	—
a4(E)	32	#5 1'-6"	—
b(E)	210	#5 30'-1"	—
b1(E)	96	#6 20'-1"	—
b2(E)	210	#5 26'-1"	—
b3(E)	60	#5 23'-3"	—
d(E)	372	#5 5'-7"	—
d1(E)	372	#5 7'-8"	—
e(E)	56	#4 16'-10"	—
e1(E)	32	#4 13'-9"	—
e2(E)	56	#4 18'-0"	—
e3(E)	4	#8 35'-11"	—
e4(E)	4	#8 13'-9"	—
e5(E)	4	#8 38'-2"	—
e6(E)	6	#4 23'-8"	—
e7(E)	6	#4 25'-2"	—
u(E)	228	#4 2'-10"	—
u1(E)	397	#4 3'-1"	—

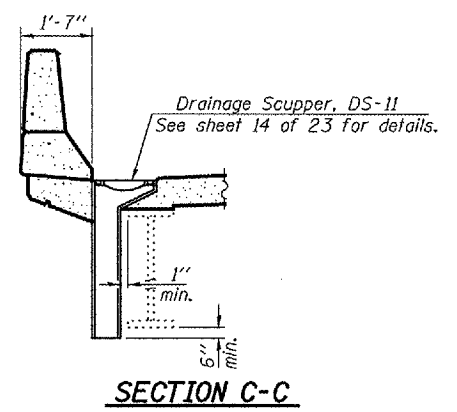
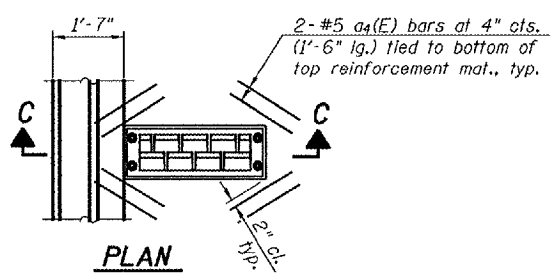
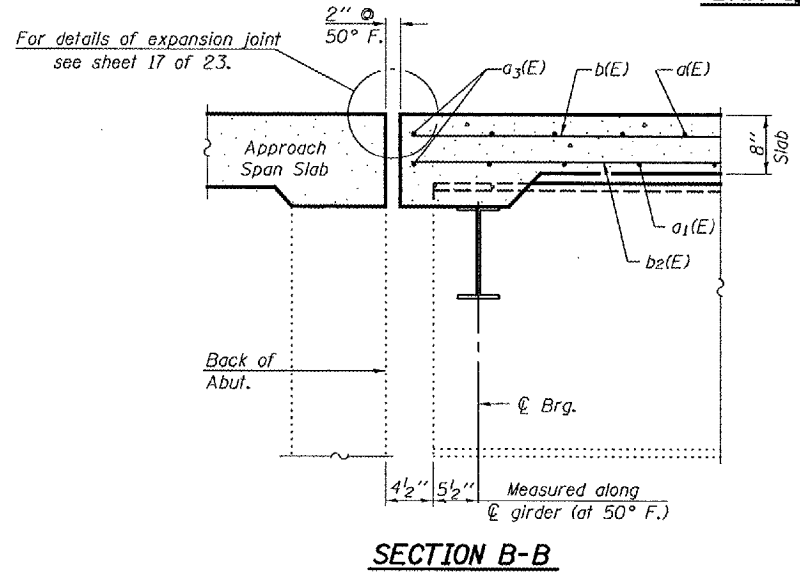
Reinforcement Bars, Epoxy Coated Pound 44480
Concrete Superstructure Cu. Yd. 195.6

Bars indicated thus 1 x 2-#8 etc. indicates 1 line of bars with 2 lengths per line.

***FILLET REINFORCEMENT TABLE**

Girder #	Span 1. @ Brg. W. Abut. to 59'-0"			Span 2. 22'-5" from @ Brg. E. Abut.		
	7-u(E)	45-u1(E)	8-u(E)	7-u(E)	44-u1(E)	14-u(E)
1	7-u(E)	45-u1(E)	8-u(E)	7-u(E)	44-u1(E)	14-u(E)
2	11-u(E)	39-u1(E)	10-u(E)	9-u(E)	39-u1(E)	17-u(E)
3	13-u(E)	37-u1(E)	10-u(E)	10-u(E)	38-u1(E)	17-u(E)
4	13-u(E)	36-u1(E)	11-u(E)	10-u(E)	39-u1(E)	16-u(E)
5	13-u(E)	37-u1(E)	10-u(E)	8-u(E)	43-u1(E)	14-u(E)

*Provide the fillet reinforcement shown in this table in the order shown and at the locations shown.
All bars shall be at 12" cts.



DESIGNED Stephen M. Ryan
CHECKED Phillip R. Litchfield
DRAWN R. Sommer
CHECKED SMR/SEM

EXAMINED *Thomas J. Demagala*
PASSED *Ralph E. Anderson*

Nov. 20 2007
ENGINEER OF BRIDGES AND STRUCTURES

SUPERSTRUCTURE DETAILS
F.A.P. RT. 313 SECTION 18-HB
KNOX COUNTY
STATION 20+11.14
STRUCTURE NO. 048-0069