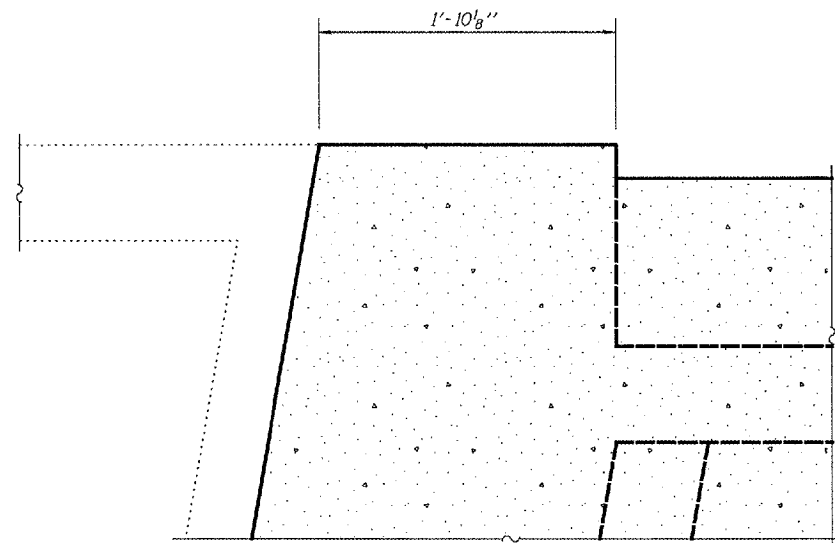


STATE OF ILLINOIS
DEPARTMENT OF TRANSPORTATION

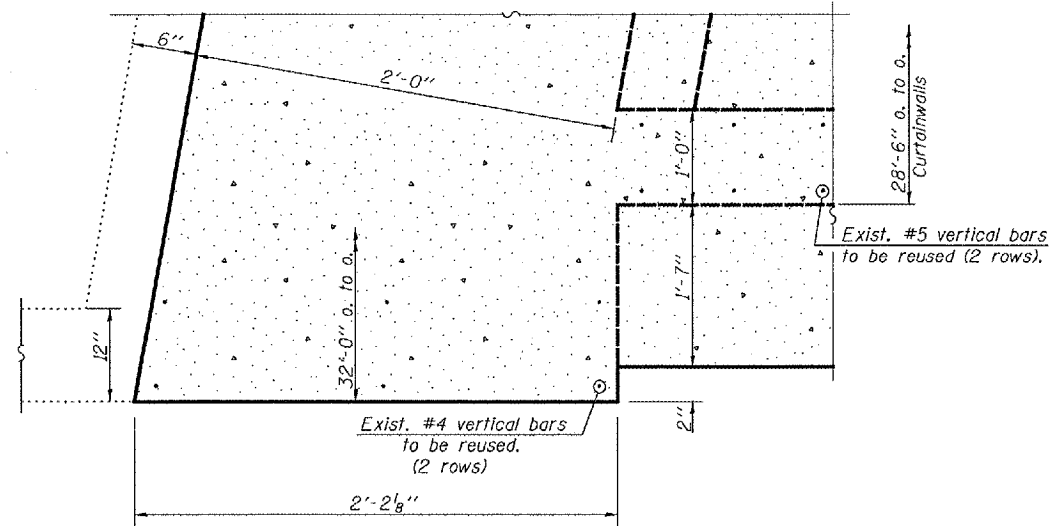
ROUTE NO.	SECTION	QUANTITY	DATE	SHEET	SHEET NO.
F.A.P. 313	18-HB	KNOX	76	36	23 SHEETS
FED. ROAD DIST. NO. 7		ILL. PROJ. NO.	FED. AID PROJECT		

Contract #68190



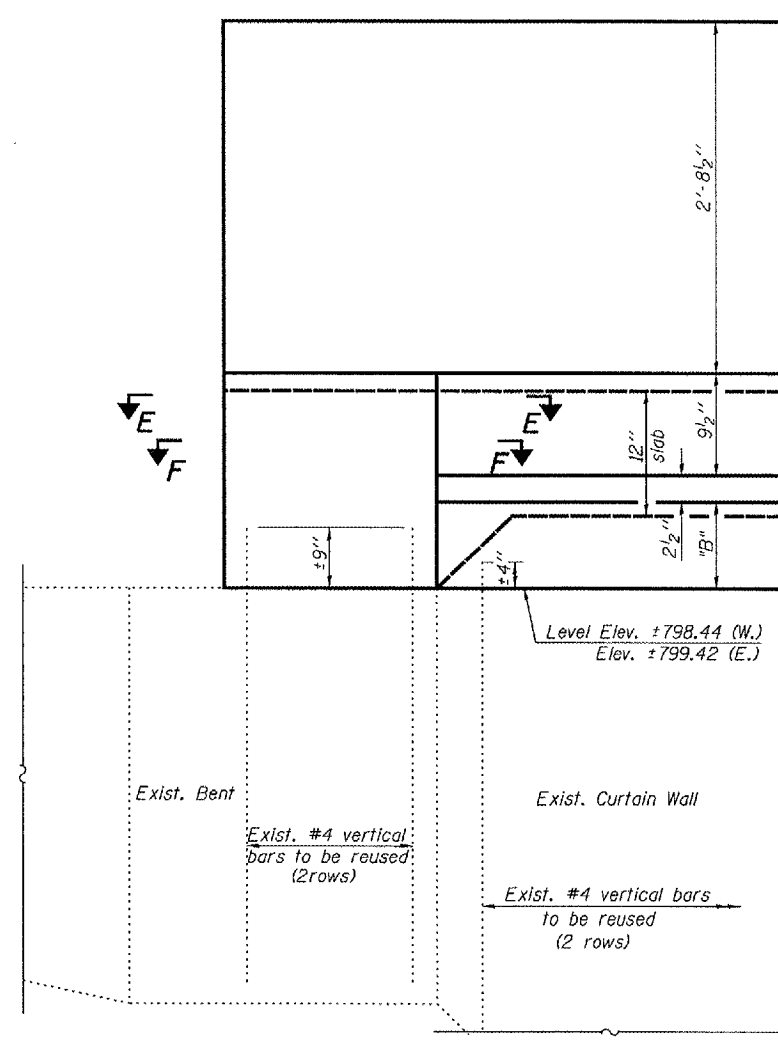
SECTION E-E

North end of West Bent and South end of East Bent.
Dimensions not shown here are the same as shown
in Section F-F.



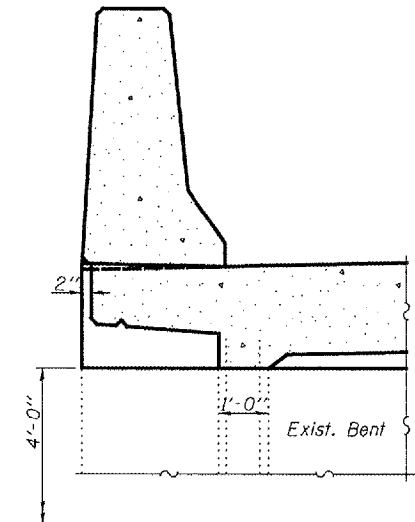
SECTION F-F

South end of West Bent and North end of East Bent.
For other locations, See Section E-E.



VIEW D-D

Details of South end of West Bent and North end of East Bent
are shown here and in Section F-F.
Details of North end of West Bent and South end of East Bent
are similar except as shown in Section E-E.



SECTION C-C

DESIGNED Stephen M. Ryan
CHECKED Phillip R. Litchfield
DRAWN R. Sommer
CHECKED SMR/SEM

EXAMINED <i>Thomas J. Damgalaki</i>	2007
PASSED <i>Ralph E. Anderson</i>	

APPROACH SPAN DETAILS
F.A.P. RT. 313 SECTION 18-HB
KNOX COUNTY
STATION 20+11.14
STRUCTURE NO. 048-0069