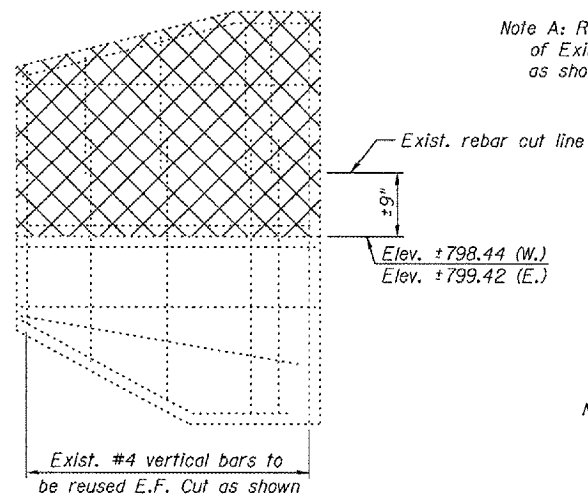
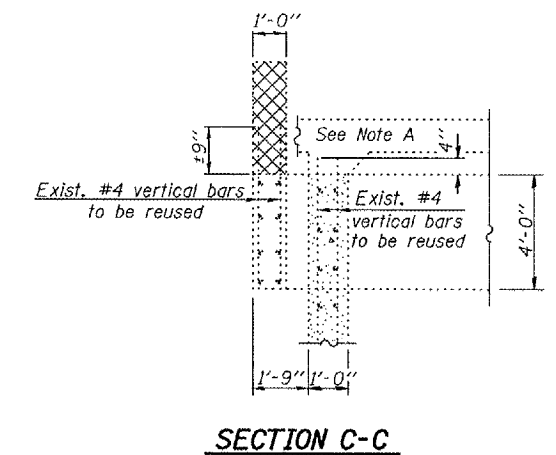
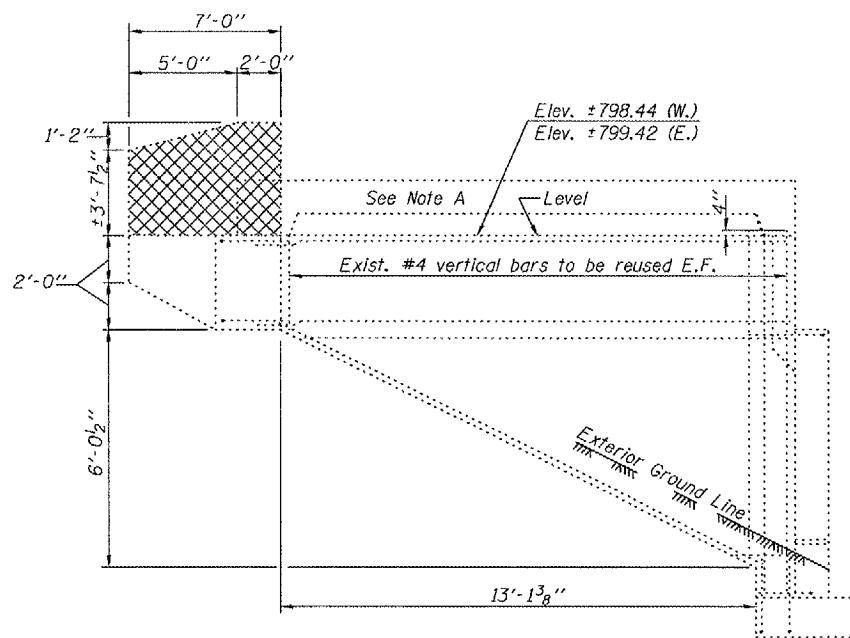
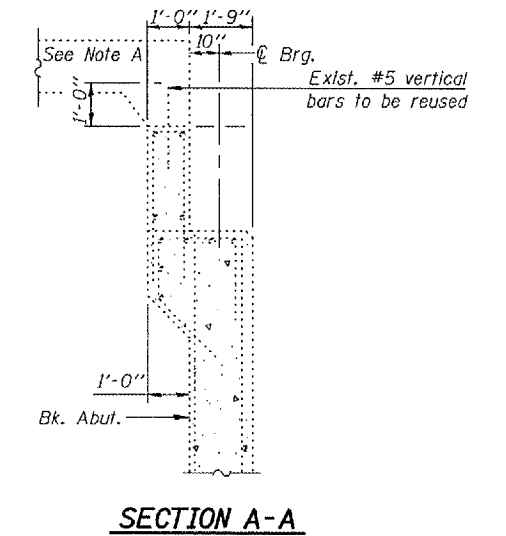
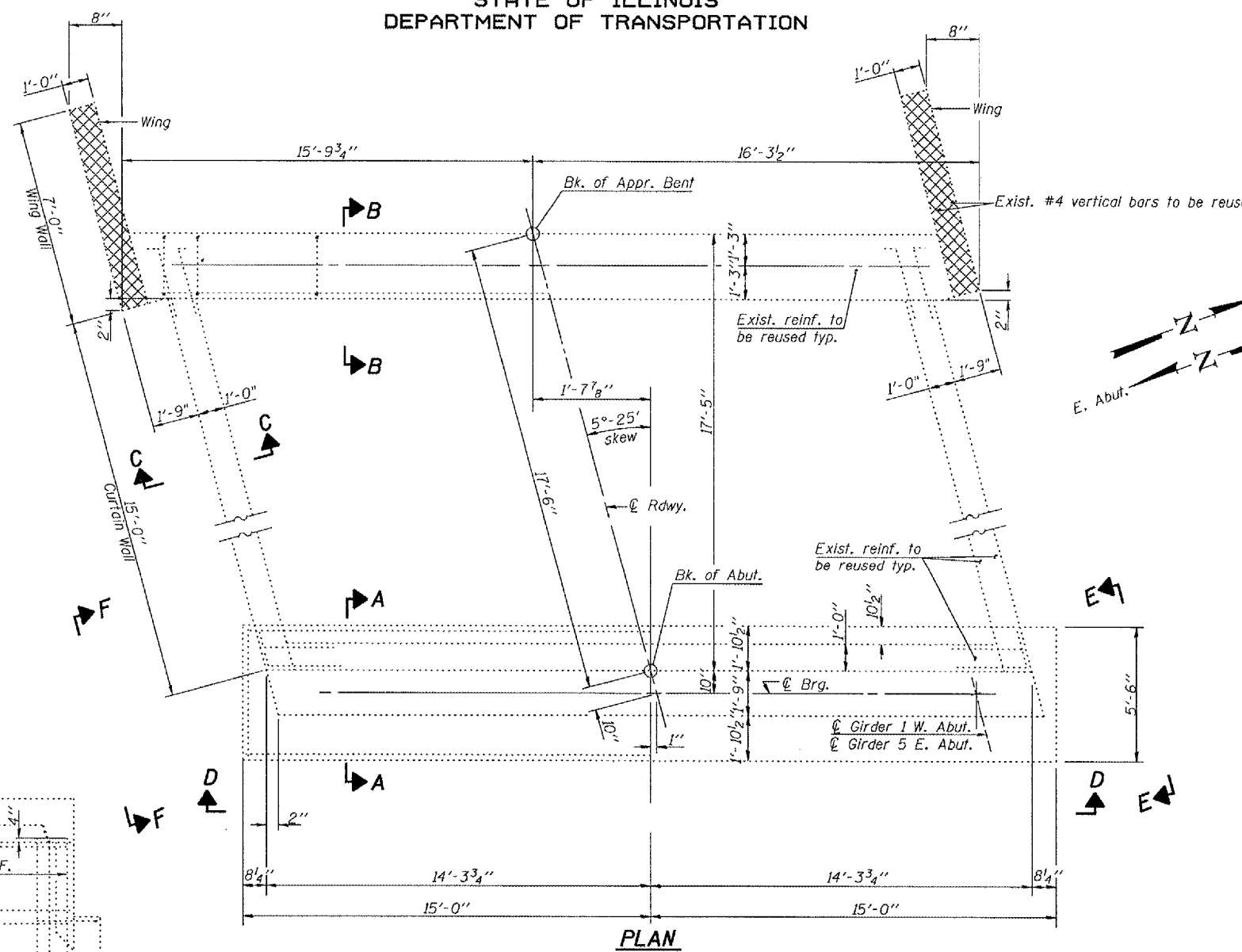
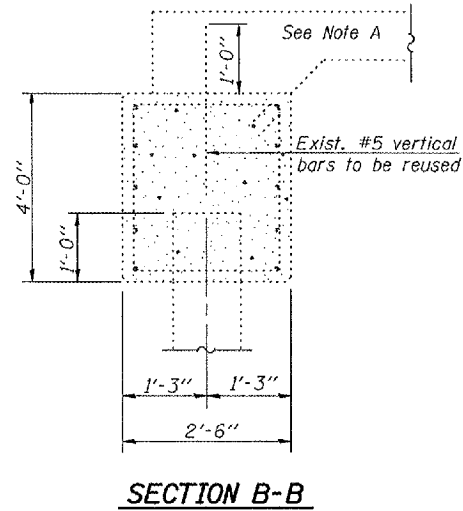


STATE OF ILLINOIS
DEPARTMENT OF TRANSPORTATION

ROUTE NO.	SECTION	COUNTY	TOTAL SHEETS	SHEET NO.	SHEET NO. 19
F.A.P. 313	18-HB	KNOX	70	42	23 SHEETS
FED. ROAD DIST. NO. 7	ILLINOIS	FED. AID PROJECT-			

Contract #68190



Note A: Removal of the existing approach span slabs is included in Removal of Existing Concrete Deck. Note that portions of the existing reinforcement as shown are to be reused in the new approach span slabs.

Notes: For Views D-D, E-E and F-F see sheet 20 of 23.
Existing reinforcement bars extending into the removal area shall be cleaned, straightened and incorporated into the new construction. Any reinforcement bars that are damaged during concrete removal shall be replaced with an approved bar splicer or anchorage system. Cost included with Concrete Removal.

BILL OF MATERIAL

Item	Unit	Total
Concrete Removal	Cu. Yd.	4.5
Structural Repair of Concrete (Depth equal to or less than 5 inches)	Sq. Ft.	139
Epoxy Crack Injection	Foot	13.5

CONCRETE REMOVAL & REPAIR DETAILS-ABUTMENTS
F.A.P. RT. 313 SECTION 18-HB
KNOX COUNTY
STATION 20+11.14
STRUCTURE NO. 048-0069

DESIGNED Stephen M. Ryan
CHECKED Phillip R. Litchfield
DRAWN R. Sommer
CHECKED SMR/SEM

EXAMINED *Thomas J. Demagalli*
PASSED *Ronald E. Anderson*
NOV. 20 2007
ENGINEER OF BRIDGE DESIGN
ENGINEER OF BRIDGES AND STRUCTURES