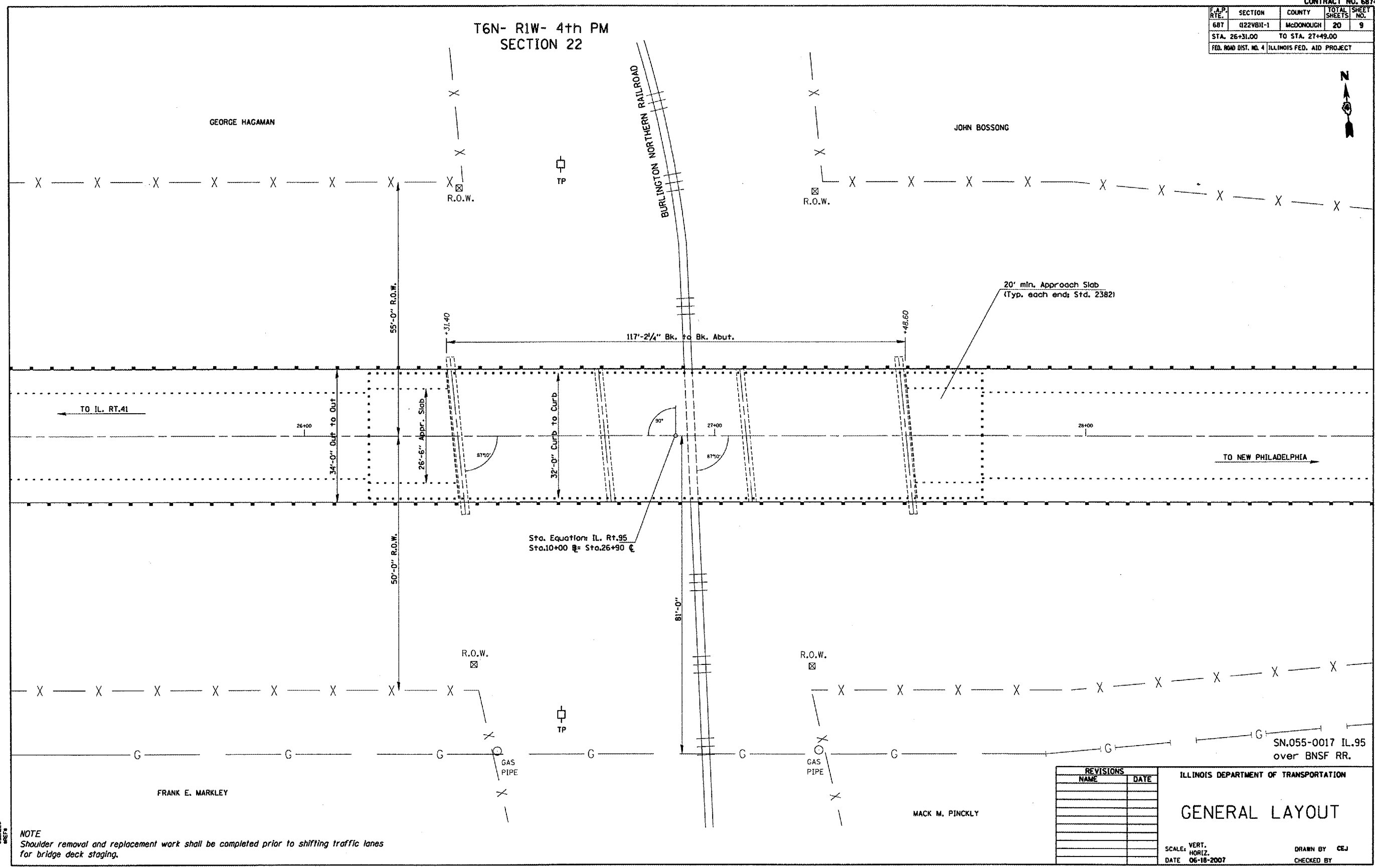


F.A.P. RTE.	SECTION	COUNTY	TOTAL SHEETS	SHEET NO.
687	122VBH-1	MCDONOUGH	20	9
STA. 26+31.00		TO STA. 27+49.00		
FED. ROAD DIST. NO. 4 ILLINOIS FED. AID PROJECT				

T6N- R1W- 4th PM  
SECTION 22



Sta. Equations IL. Rt. 95  
Sta. 10+00 = Sta. 26+90

SN.055-0017 IL.95  
over BNSF RR.

REVISIONS	
NAME	DATE

ILLINOIS DEPARTMENT OF TRANSPORTATION

GENERAL LAYOUT

SCALE: VERT.  
HORIZ.  
DATE 06-18-2007

DRAWN BY CEJ  
CHECKED BY

DATE: 06/13/07  
BY: ILL. DEPT. OF TRANSPORTATION  
SCALE: AS SHOWN  
SHEET 9

NOTE  
Shoulder removal and replacement work shall be completed prior to shifting traffic lanes for bridge deck staging.