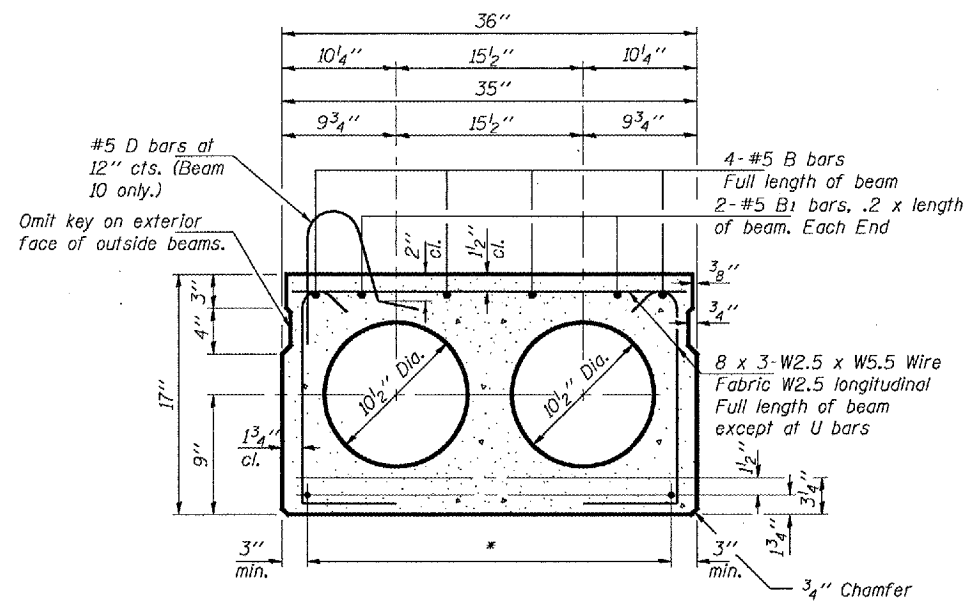


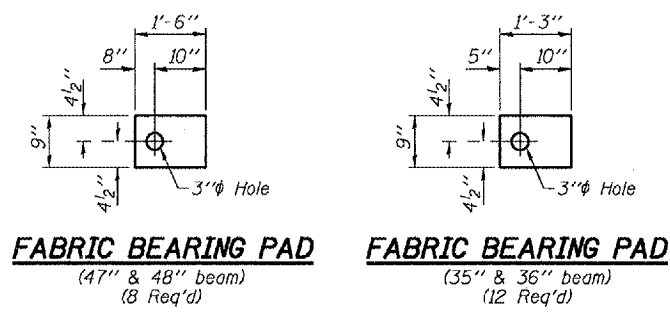
STATE OF ILLINOIS
DEPARTMENT OF TRANSPORTATION

ROUTE NO.	SECTION	COUNTY	DISTRICT	SHEET NO.	SHEET NO. 3 4 SHEETS
FAP 687		MC DONOUGH	20	19	
FED. ROAD DIST. NO. 7	ILLINOIS	FED. AID PROJECT-			



TYPICAL SECTION

1/2" ϕ Strands, Each Strand Stressed to 30,900 Lbs.
10-Strands 1 3/4" up, 2-Strands 12" up

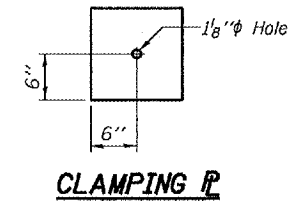


FABRIC BEARING PAD

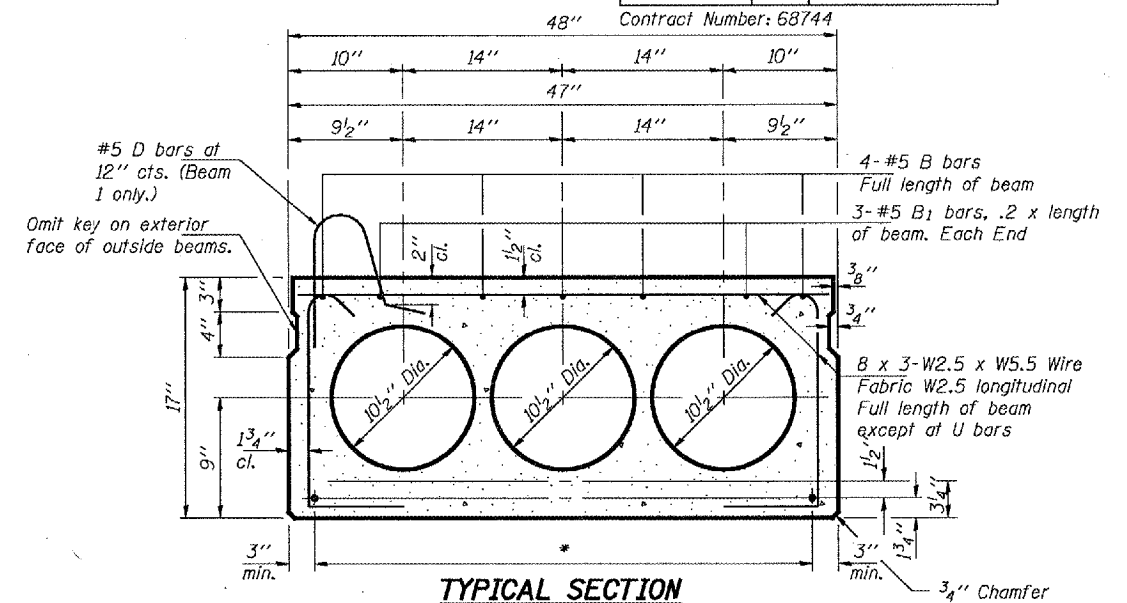
(47" & 48" beam)
(8 Req'd)

FABRIC BEARING PAD

(35" & 36" beam)
(12 Req'd)



CLAMPING PLATE



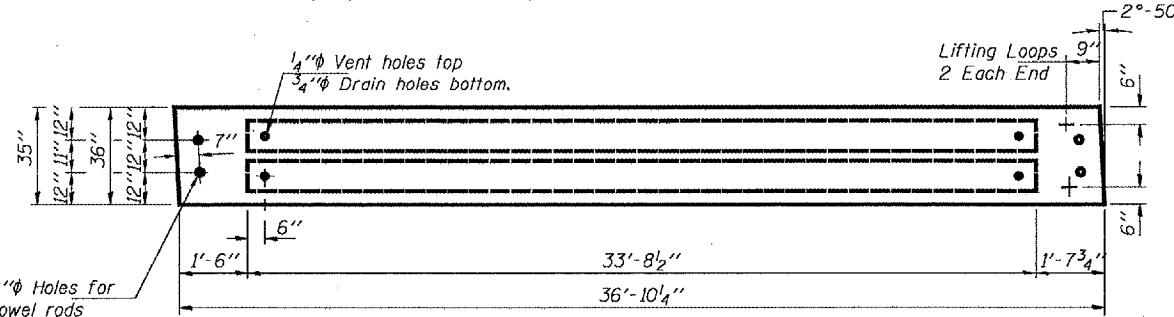
TYPICAL SECTION

1/2" ϕ Strands, Each Strand Stressed to 30,900 Lbs.
6-Strands 1 3/4" up, 8-Strands 3 1/4" up

TRANSVERSE PLACEMENT GUIDELINES

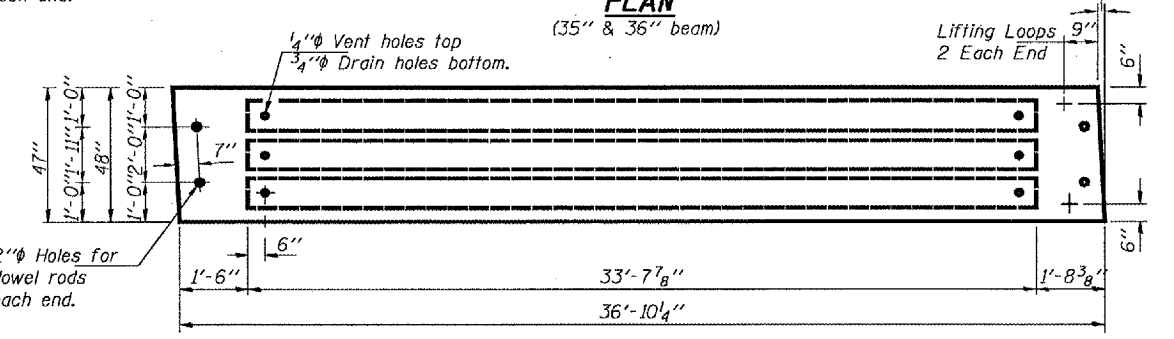
1. Place strands symmetrically about centerline of beam.
2. The minimum distance from center to center of strands in all directions shall be 2".
3. The minimum clearance from strand to dowel hole shall be 1/2".
4. The minimum clearance from strand to void shall be 1/2".

Vertical placement of strands shall not be adjusted to satisfy the above guidelines.



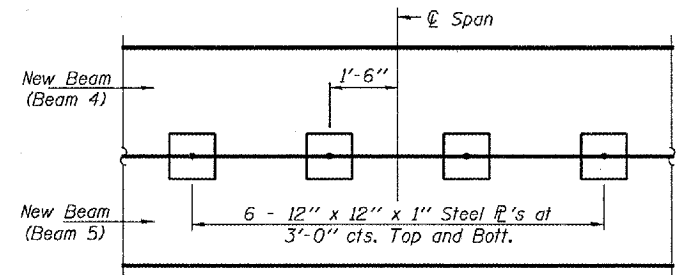
PLAN

(35" & 36" beam)

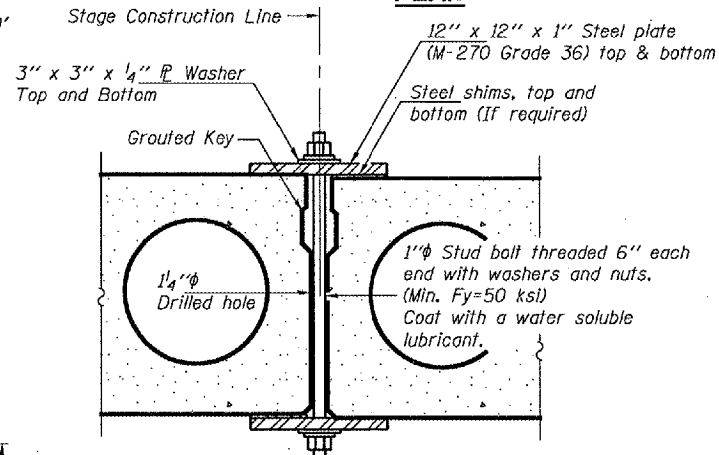


PLAN

(47" & 48" beam)



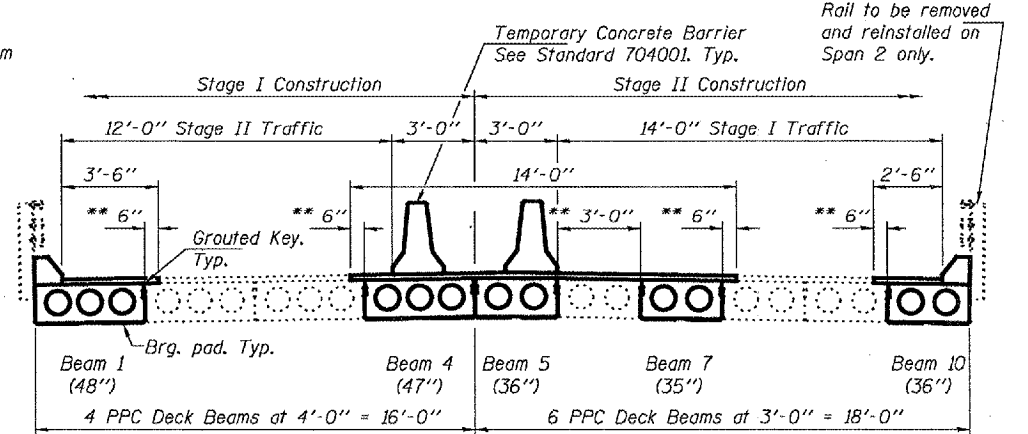
PLAN



SECTION

SHEAR KEY CLAMPING DEVICE

Cost included with Precast Prestressed Concrete Deck Beams (17" Depth)
(6 Required)



DECK CROSS SECTION

** Limits of HMA Surface Removal. Existing waterproofing to remain. Lap new waterproofing 6" over existing.

NOTES

- Prestressing steel shall be uncoated high strength, low relaxation 7-wire strand, Grade 270. The nominal diameter shall be 1/2" and the nominal cross-sectional area shall be 0.153 sq. in. Lifting loops shall be 2 - 1/2" ϕ - 270 ksi strands, as shown.
- Non prestressing steel shall conform to ASTM A 706 (IL MOD), Grade 60.
- The bearing seat surfaces shall be adjusted by shimming to assure firm and even bearing. Two 1/8" fabric adjusting shims of the dimensions of the bearing pads shall be provided for each bearing.
- Keyway surfaces shall be cleaned to remove form oil or other bond breaking material prior to shipment of the beams. Cleaning shall be done by sandblasting the keyway areas between top of the beam and the bottom edge of the key.
- Corrosion inhibitor, per Article 1020.05(b)(12) of the Standard Specifications, shall be used in the concrete for precast prestressed concrete deck beams.
- Required Release Strength, f'cl, shall be 4000 p.s.i.

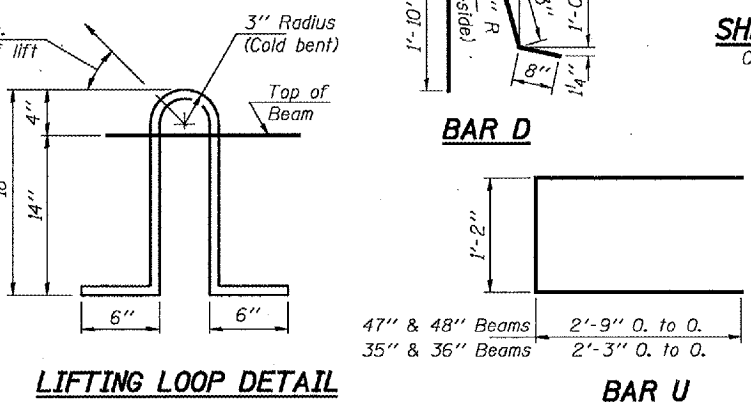
BILL OF MATERIAL

Item	Unit	Total
Precast Prestressed Concrete Deck Bms. 17" Depth	Sq. Ft.	621

REPAIR DETAILS
FAP 687
MC DONOUGH COUNTY
SN 055-0017

DESIGNED	ATH
CHECKED	AJB
DRAWN	baliva
CHECKED	ATH AJB

NOVEMBER 7, 2007
EXAMINED *Carl Prosser*
PASSED *Ralph E. Anderson*
ENGINEER OF STRUCTURAL SERVICES
ENGINEER OF BRIDGES AND STRUCTURES



LIFTING LOOP DETAIL

BAR U