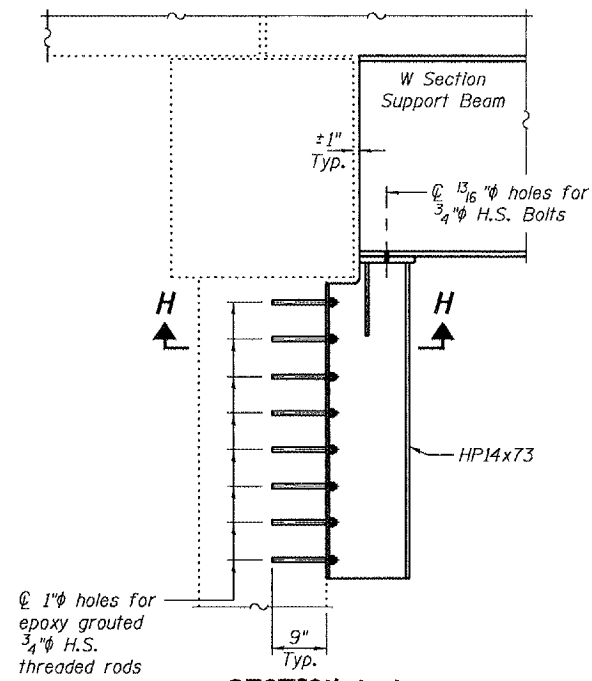


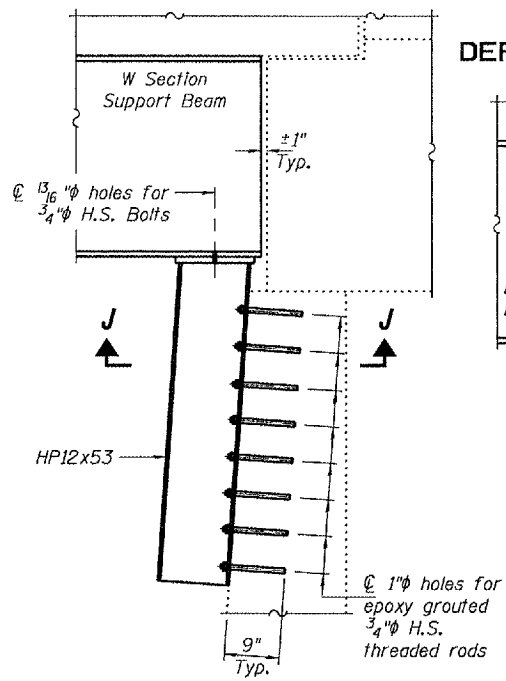
STATE OF ILLINOIS
DEPARTMENT OF TRANSPORTATION

ROUTE NO.	SECTION	QUANTITY	TOTAL SHEETS	SHEET NO.	SHEET NO. 2
FA 53		Mercer	9	9	2 SHEETS
FED. ROAD DIST. NO. 7	ILLINOIS	FED. AID PROJECT			

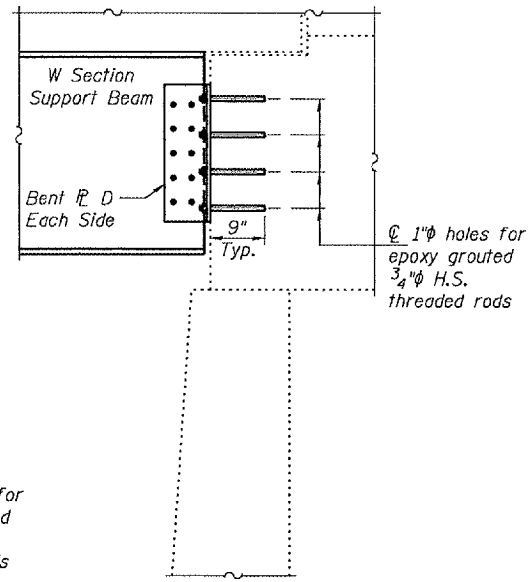
Contract Number: 68752



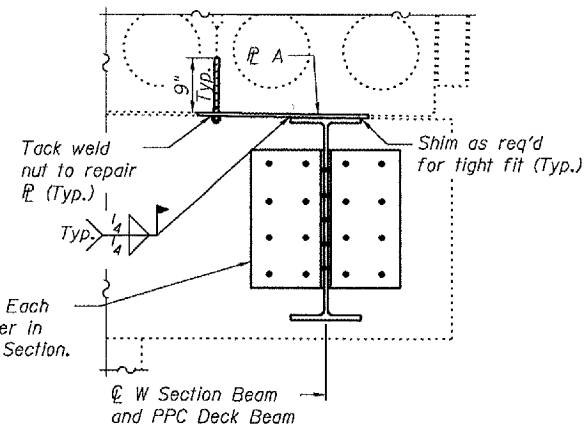
SECTION A-A



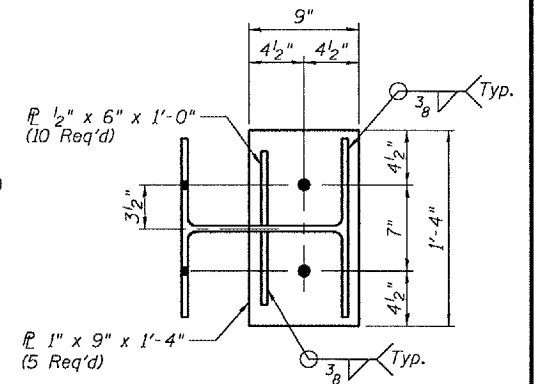
SECTION B-B



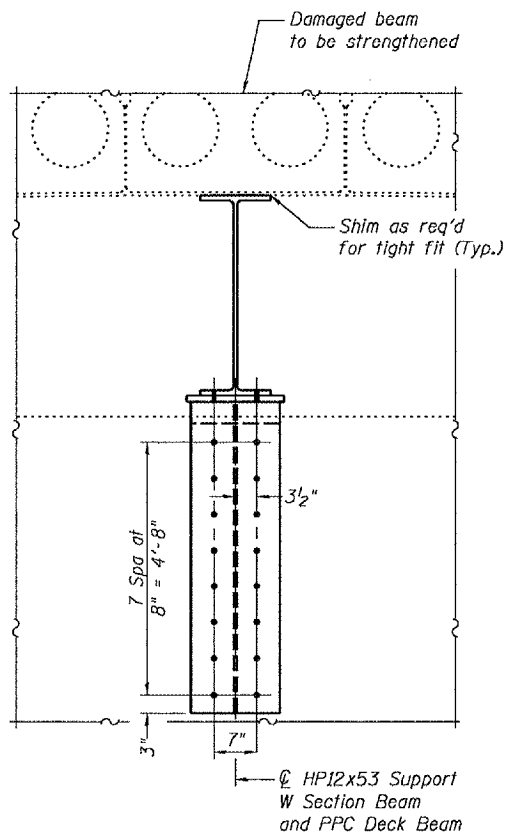
SECTION C-C



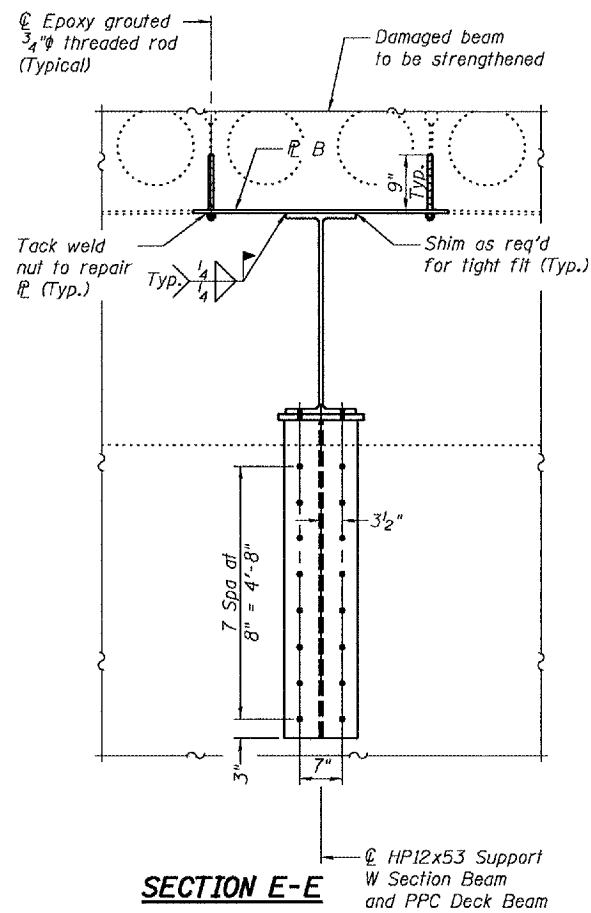
SECTION G-G



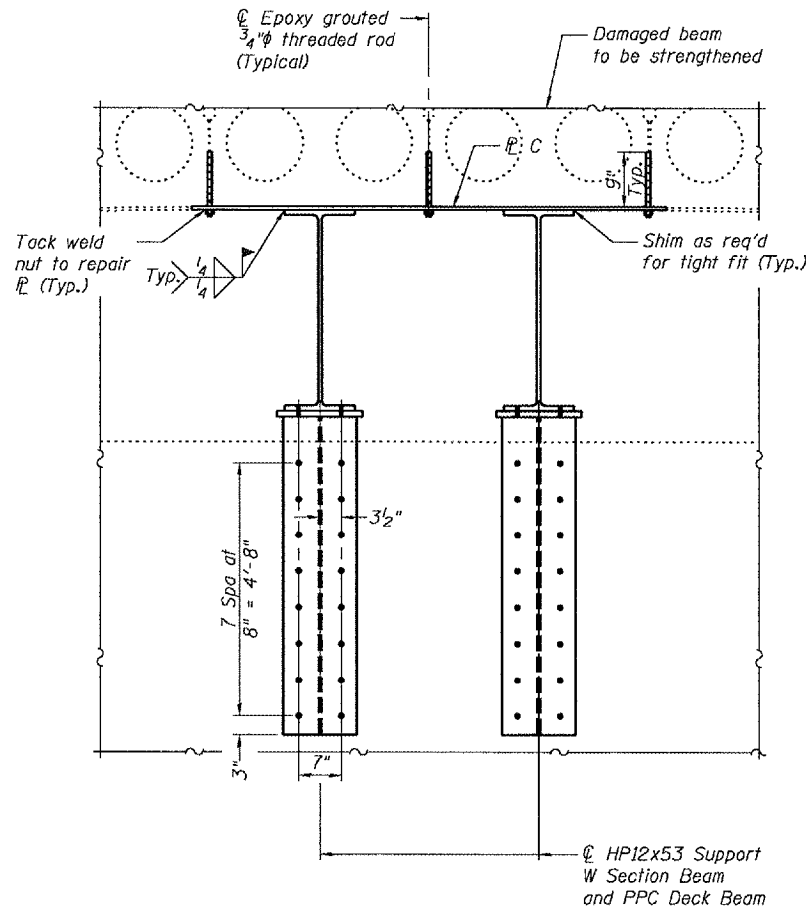
SECTION H-H



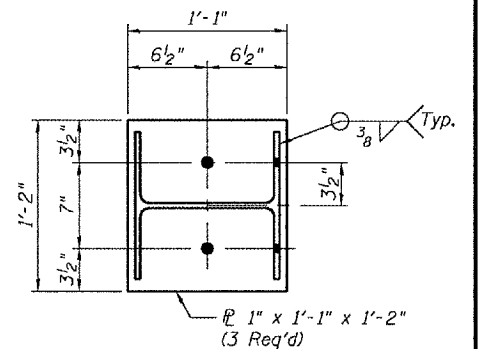
SECTION D-D



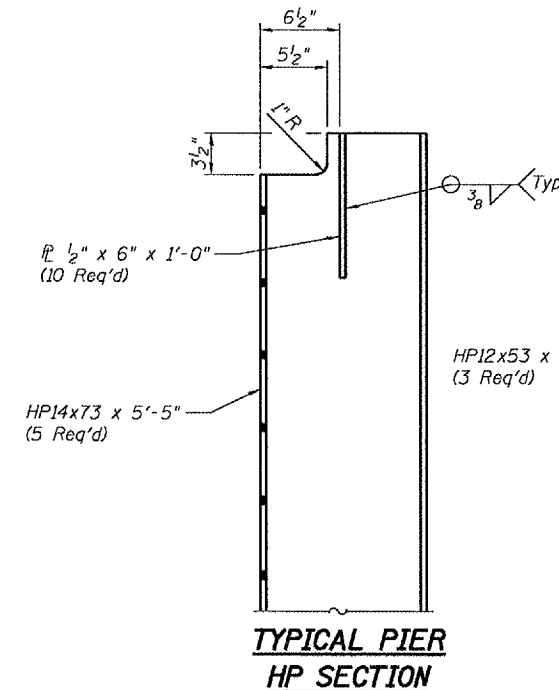
SECTION E-E



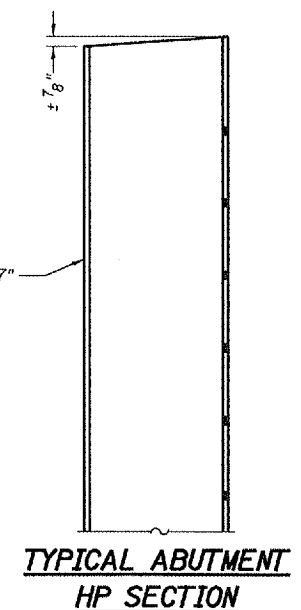
SECTION F-F



SECTION J-J



**TYPICAL PIER
HP SECTION**



**TYPICAL ABUTMENT
HP SECTION**

DESIGNED	S.J.B.
CHECKED	A.J.B.
DRAWN	Drew Christopher
CHECKED	S.J.B. A.J.B.

EXAMINED	November 7, 2007
PASSED	<i>Ralph E. Anderson</i> ENGINEER OF STRUCTURAL SERVICES
	<i>Ralph E. Anderson</i> ENGINEER OF BRIDGES AND STRUCTURES

SUPPORT DETAILS
F.A.P. RT 310
MERCER COUNTY
SN 066-0003