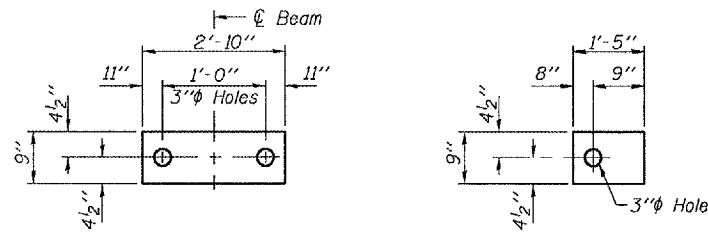


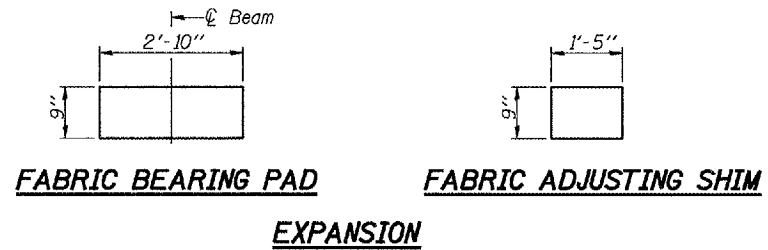
STATE OF ILLINOIS
DEPARTMENT OF TRANSPORTATION

PROJECT NO.	SECTION	COUNTY	TOTAL SHEETS	SHEET NO.	SHEET NO. 2
FA 36		MC DONOUGH	13	10	5 SHEETS
FED. ROAD DIST. NO. 7	ILLINOIS	FED. AID PROJECT			

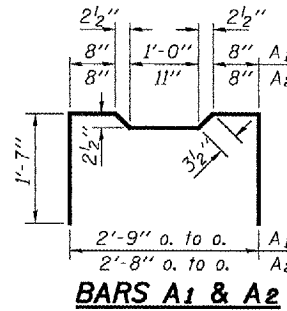
Contract Number: 68760



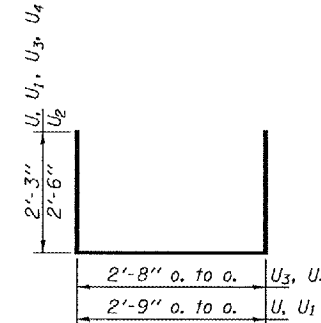
FABRIC BEARING PAD FABRIC ADJUSTING SHIM
FIXED



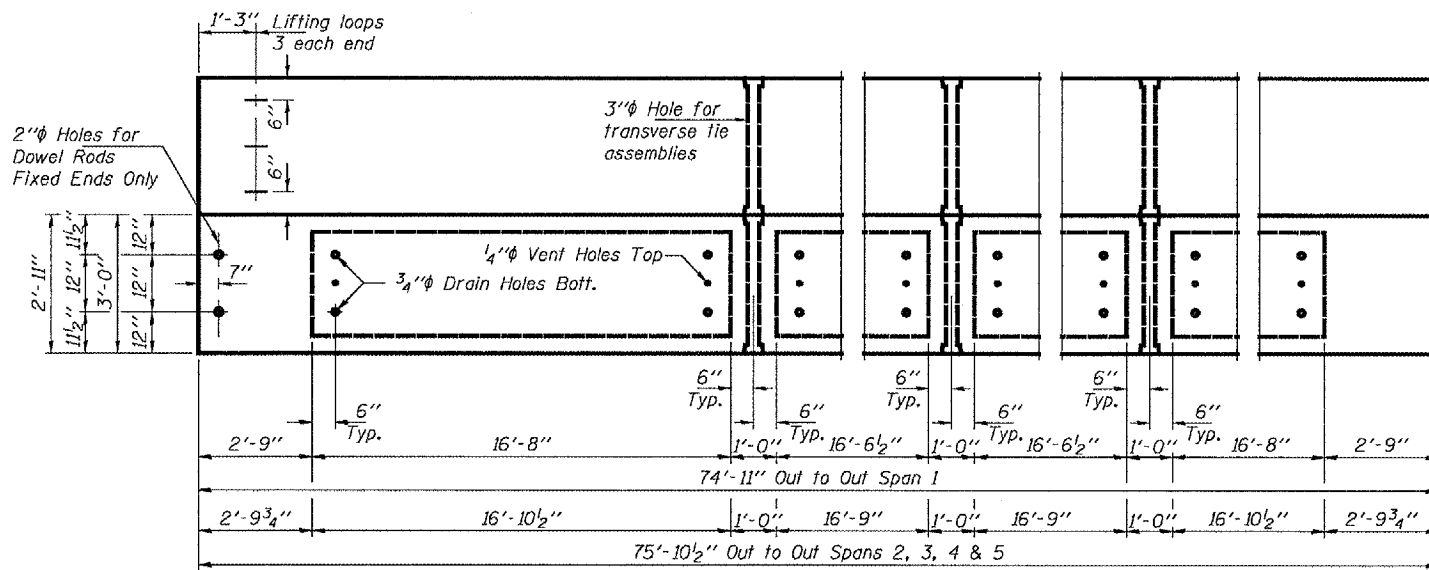
FABRIC BEARING PAD FABRIC ADJUSTING SHIM
EXPANSION



BARS A1 & A2

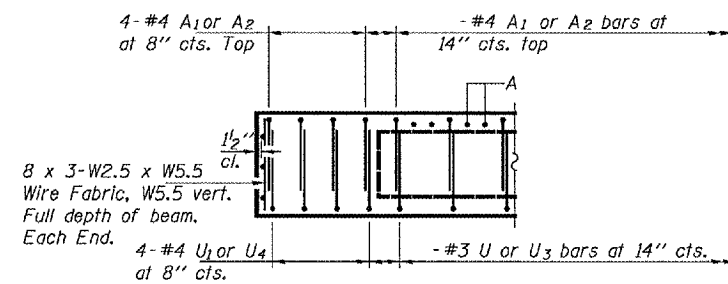


BARS U, U1, U3 & U4

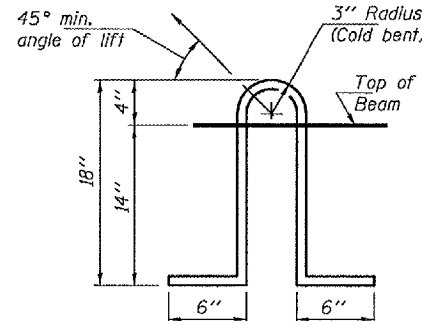


PLAN

See sheets 4 & 5 of 5 for additional reinforcement bars cast in beams.



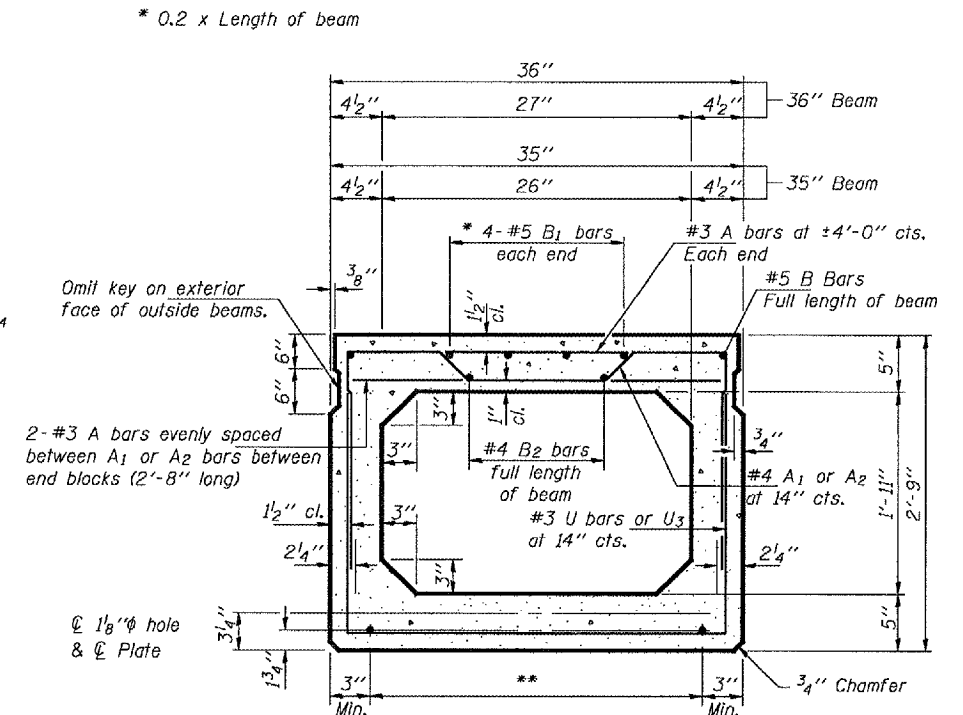
END ELEVATION



LIFTING LOOP DETAIL

NOTES

Prestressing steel shall be uncoated high strength, low relaxation 7-wire strand, Grade 270. The nominal diameter shall be 1/2" and the nominal cross-sectional area shall be 0.153 sq. in. Lifting loops shall be 3-1/2" φ-270 ksi strands, as shown. The 1" φ rods in the transverse tie assembly shall be tightened to a snug fit and the threads set. Pockets that receive transverse tie bar on outside shall be filled with grout after transverse tie assembly is in place. Non prestressing steel shall conform to ASTM A 706 (IL MOD), Grade 60. The bearing seat surfaces shall be adjusted by shimming to assure firm and even bearing. Two 1/8" fabric adjusting shims of the dimensions shown shall be provided for each bearing. Keyway surfaces shall be cleaned to remove form oil or other bond breaking material prior to shipment of the beams. Cleaning shall be done by sandblasting the keyway areas between top of the beam and the bottom edge of the key. Corrosion Inhibitor, per Article 1020.05(b)(12) of the Standard Specifications, shall be used in the concrete for precast prestressed concrete deck beams. Required Release Strength, f'cl, shall be 4000 p.s.i.



TYPICAL SECTION

17-1/2" φ Strands Each Strand Stressed to 30,900 Lbs.
8-Strands 1 3/4" up, 5-Strands 3/4" up
2-Strands 6" up, 2-Strands 9" up.

TRANSVERSE PLACEMENT GUIDELINES

1. Place strands symmetrically about centerline of beam.
2. The minimum distance from center to center of strands in all directions shall be 2".
3. The minimum clearance from strand to dowel hole shall be 1/2".
4. The minimum clearance from strand to void shall be 1/2".

Vertical placement of strands shall not be adjusted to satisfy the above guidelines.

BILL OF MATERIAL

Item	Unit	Total
Precast Prestressed Conc. Deck Bms.	Sq. Ft.	2469

REPAIR DETAILS
FA 36
MCDONOUGH COUNTY
SN 055-0010

DESIGNED	ATH
CHECKED	AJB
DRAWN	balliva
CHECKED	ATH AJB

NOVEMBER 7, 2007
EXAMINED *Carl P. ...*
PASSED *Ralph E. Anderson*
ENGINEER OF STRUCTURAL SERVICES
ENGINEER OF BRIDGES AND STRUCTURES

PD-5-S 11-1-06