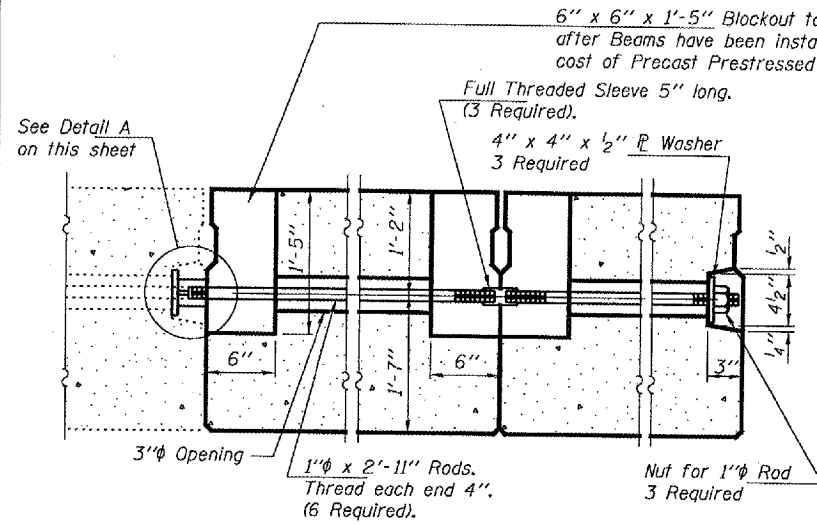
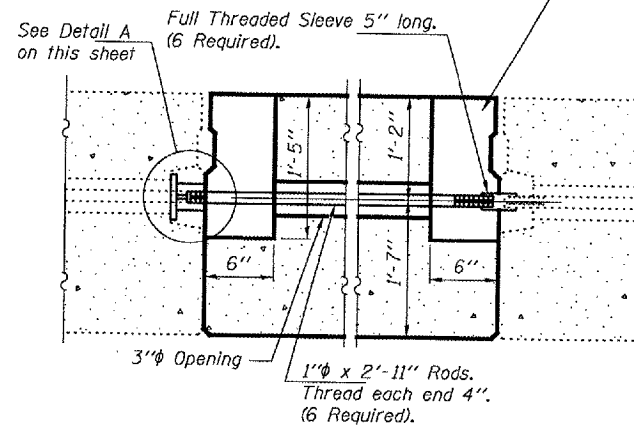


STATE OF ILLINOIS
DEPARTMENT OF TRANSPORTATION

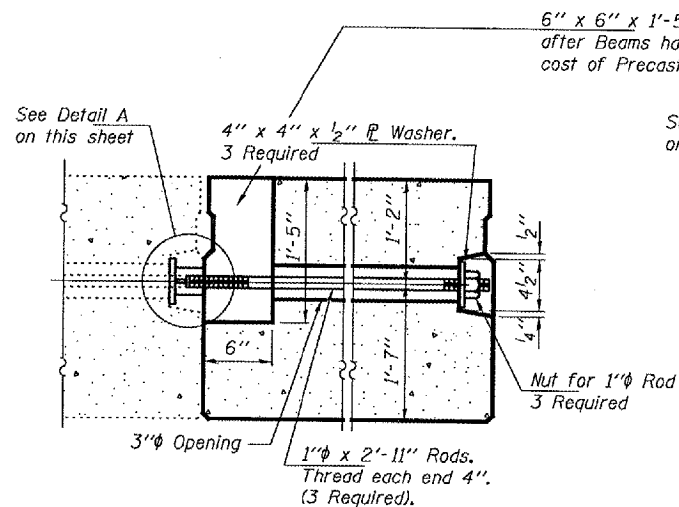
ROUTE NO.	SECTION	COUNTY	TOTAL SHEETS	SHEET NO.	SHEET NO. 3 5 SHEETS
FA 36		MC DONOUGH	13	11	
FED. ROAD DIST. NO. 7		BALTIMORE	FED. AID PROJECT		Contract Number: 68760



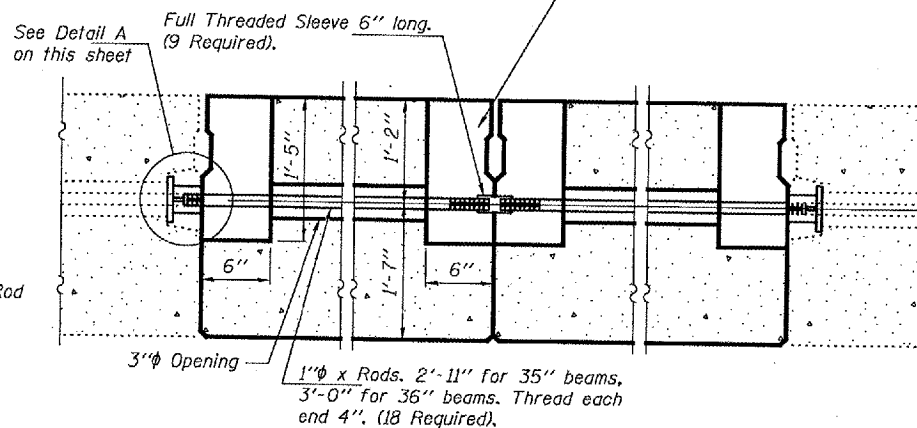
TRANSVERSE TIE ASSEMBLY
(Typ. span 4 beams 1 & 2 replacement)



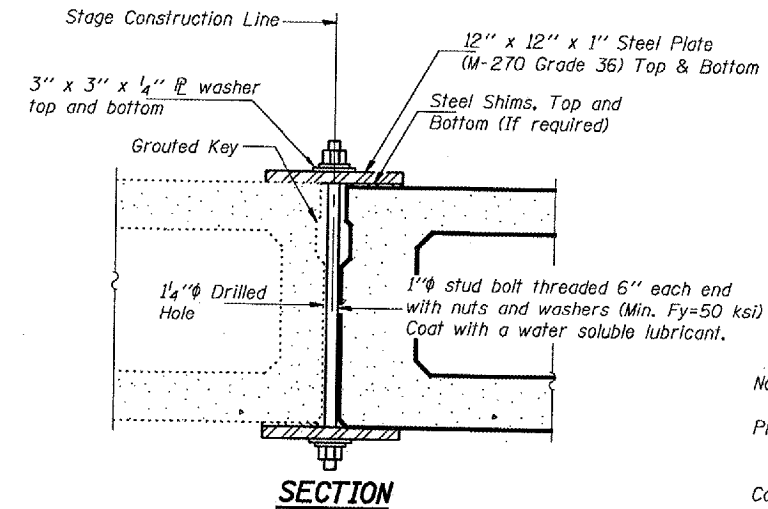
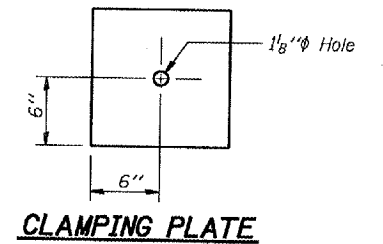
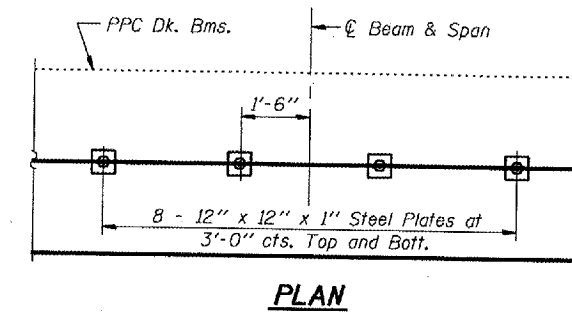
TRANSVERSE TIE ASSEMBLY
(Typ. span 5 beams 8 & 13 replacement)



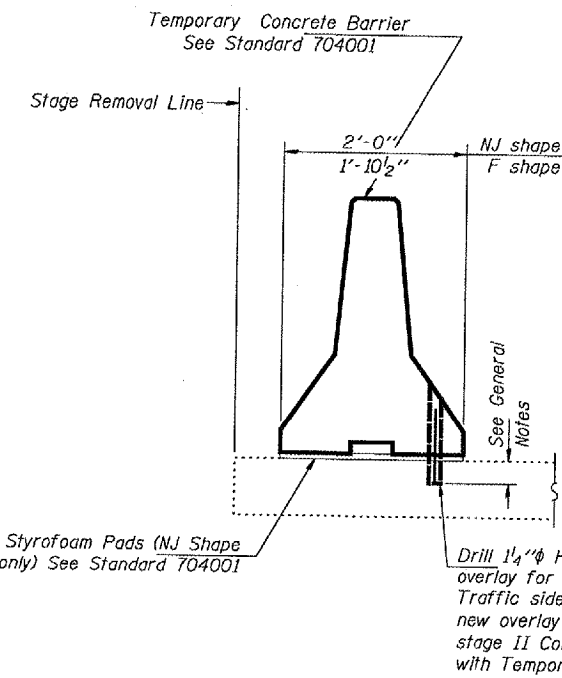
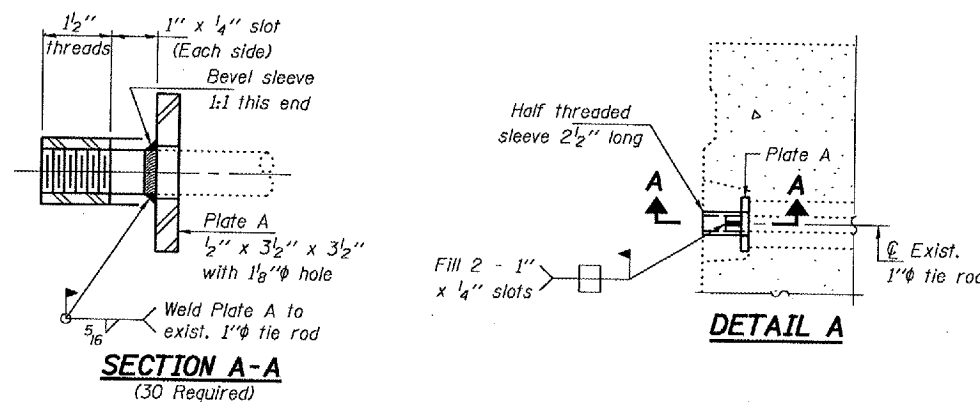
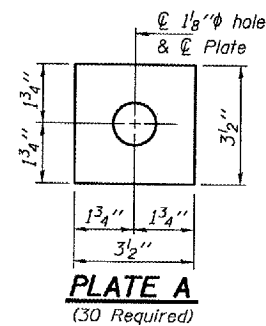
TRANSVERSE TIE ASSEMBLY
(Typ. span 1 beam 14 replacement)



TRANSVERSE TIE ASSEMBLY
(Typ. except as noted)



Notes:
See Special Provisions for Stage Construction Precast Prestressed Concrete Deck Beams. See sheet 1 of 5 for Stage traffic lanes. Cost is included with Precast Prestressed Concrete Deck Beams.



DESIGNED	ATH
CHECKED	AJB
DRAWN	baliva
CHECKED	ATH AJB

NOVEMBER 7, 2007

EXAMINED *Carl Perry*
ENGINEER OF STRUCTURAL SERVICES

PASSED *Ralph E. Anderson*
ENGINEER OF BRIDGES AND STRUCTURES

REPAIR DETAILS
FA 36
MCDONOUGH COUNTY
SN 055-0010