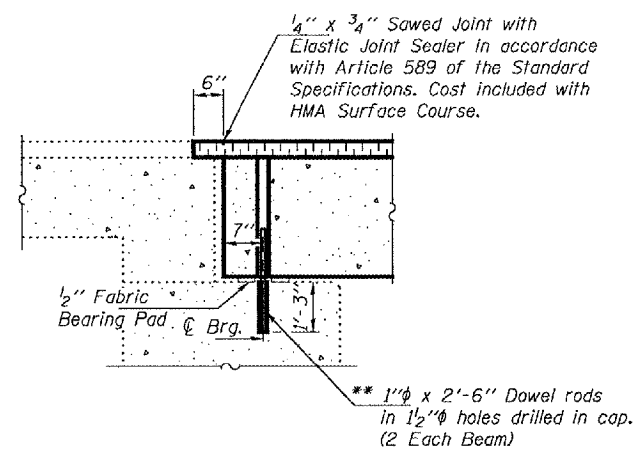
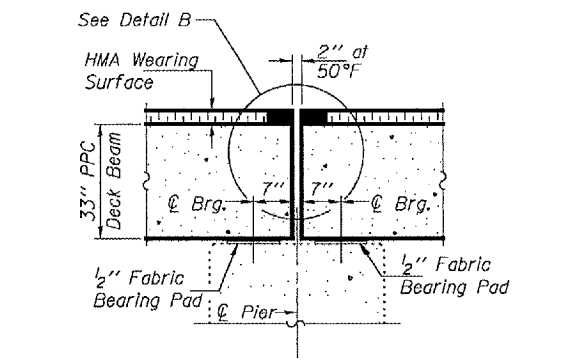


STATE OF ILLINOIS
DEPARTMENT OF TRANSPORTATION

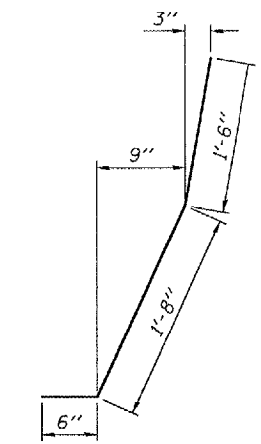
| | | | | | |
|-----------------------|---------|------------|------------------|-------|-------------------------|
| ROUTE NO. | SECTION | COUNTY | DATE | SHEET | SHEET NO. 4 5 SHEETS |
| FA 36 | | MC DONOUGH | 13 | 12 | |
| FED. ROAD DIST. NO. 7 | | ILLINOIS | FED. AID PROJECT | | Contract Number: 68760 |



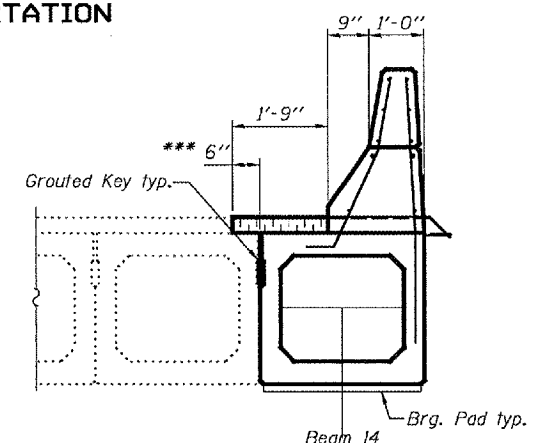
TYPICAL SECTION AT ABUTMENTS



TYPICAL SECTION AT PIERS 1, 3, & 5

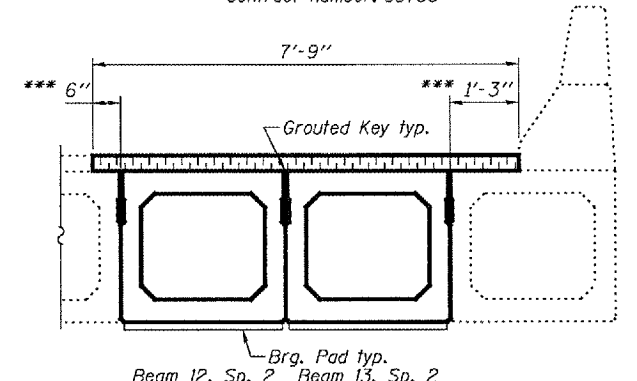


BAR D(E)



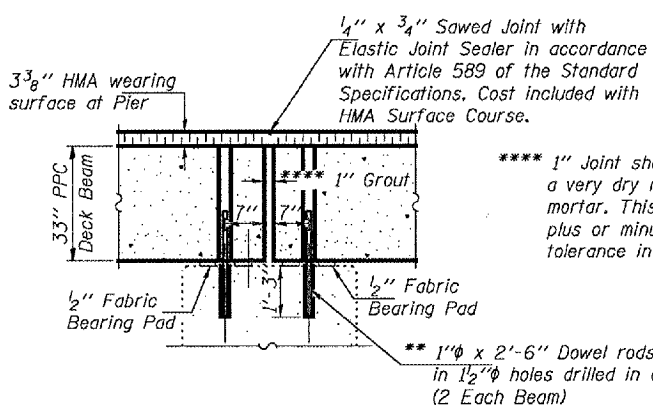
PARTIAL CROSS SECTION
(Span 1, Looking North)

*** Limits of HMA Surface Removal. Existing waterproofing to remain. Lap new waterproofing 6" over existing.



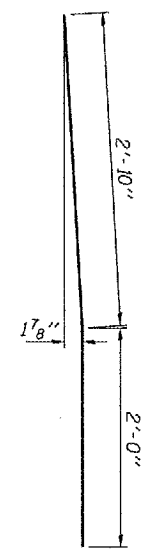
PARTIAL CROSS SECTION
(Span 2, Looking North)

(Span 3, Looking South)

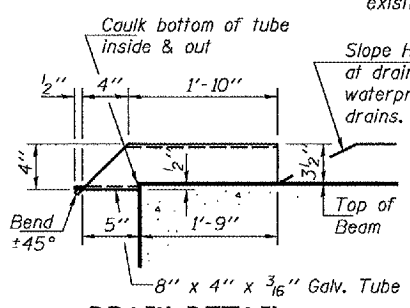


TYPICAL SECTION AT PIERS 2 & 4

** Existing Dowel Rods shall be cut off & ground flush with the top of the existing concrete. Cost included with Removal of Existing P.P.C. Deck Beams. Proposed Dowel Rods shall be grouted after beams are in place and allowed to cure (Min. 24 hrs.) prior to grouting shear keys.

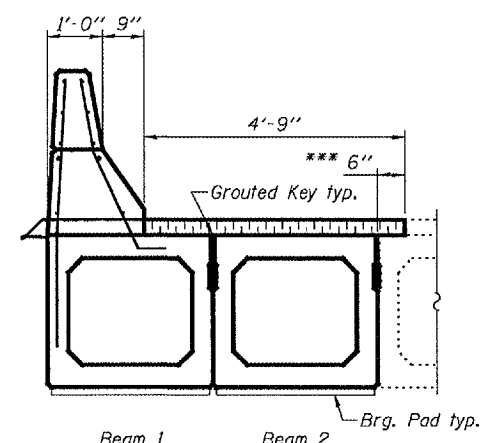


BAR D1(E)

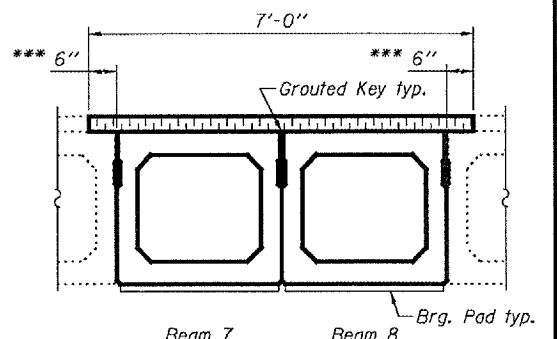


DRAIN DETAIL

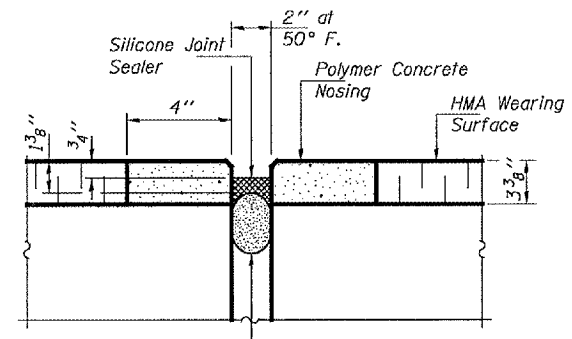
Cost included with Concrete Superstructure



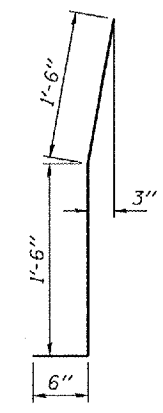
PARTIAL CROSS SECTION
(Span 4, Looking North)



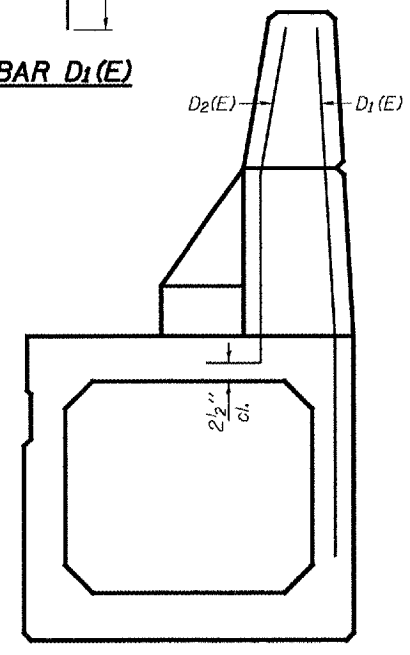
PARTIAL CROSS SECTION
(Span 5, Looking North)



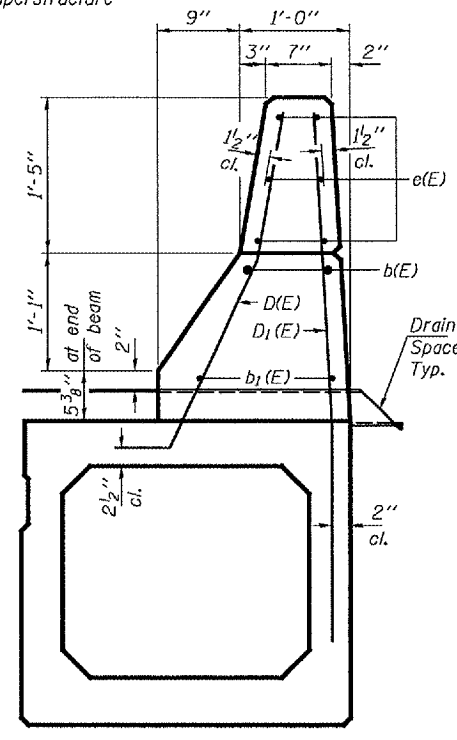
DETAIL B



BAR D2(E)

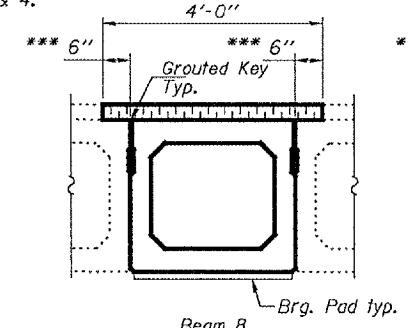


END VIEW OF CURB

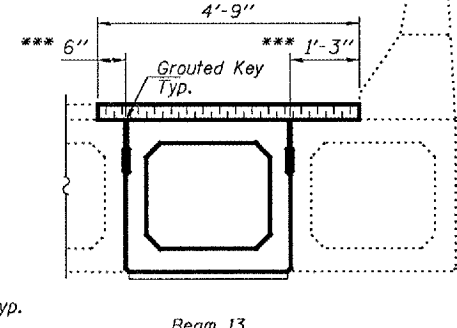


SECTION THRU CURB

Drain tubes at 6'-0" cts. Space to miss D(E) & D1(E) bars Typ. spans 1 & 4.



PARTIAL CROSS SECTION
(Span 5, Looking North)



| | |
|----------|---------|
| DESIGNED | ATH |
| CHECKED | AJB |
| DRAWN | baliva |
| CHECKED | ATH AJB |

NOVEMBER 7, 2007

EXAMINED *Carl Proyer*
ENGINEER OF STRUCTURAL SERVICES

PASSED *Ralph E. Anderson*
ENGINEER OF BRIDGES AND STRUCTURES

See sheet 5 of 5 for spacing of bars D(E), D1(E) & D2(E).

REPAIR DETAILS
FA 36
MCDONOUGH COUNTY
SN 055-0010