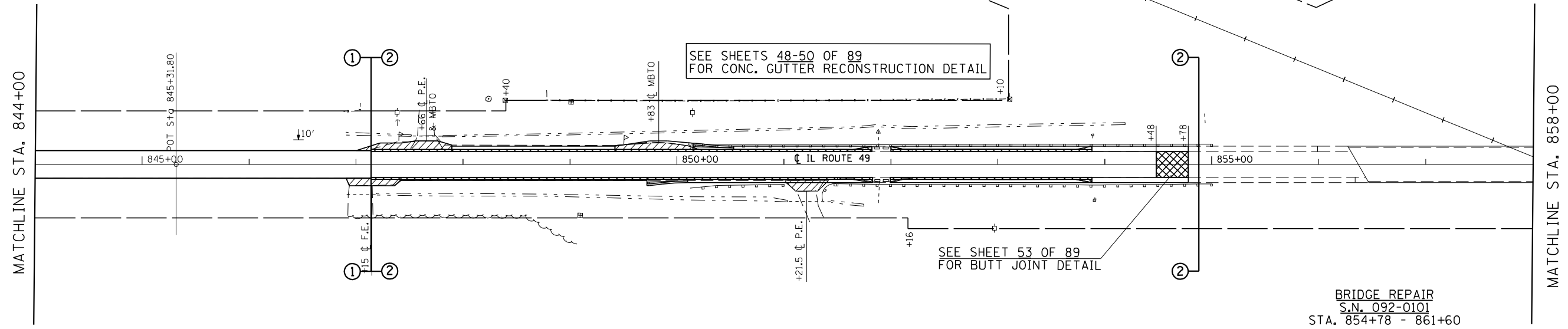


F.A.P. RTE.	SECTION	COUNTY	TOTAL SHEETS	SHEET NO.
840	(121,122)RS-3	VERMILION	89	22
STA. 844+00		TO STA. 873+00		
FED. ROAD DIST. NO.	ILLINOIS	FED. AID PROJECT		

SEC. 26, T 22 N, R 14 W



SEE SHEETS 48-50 OF 89 FOR CONC. GUTTER RECONSTRUCTION DETAIL

SEE SHEET 53 OF 89 FOR BUTT JOINT DETAIL

BRIDGE REPAIR
S.N. 092-0101
STA. 854+78 - 861+60

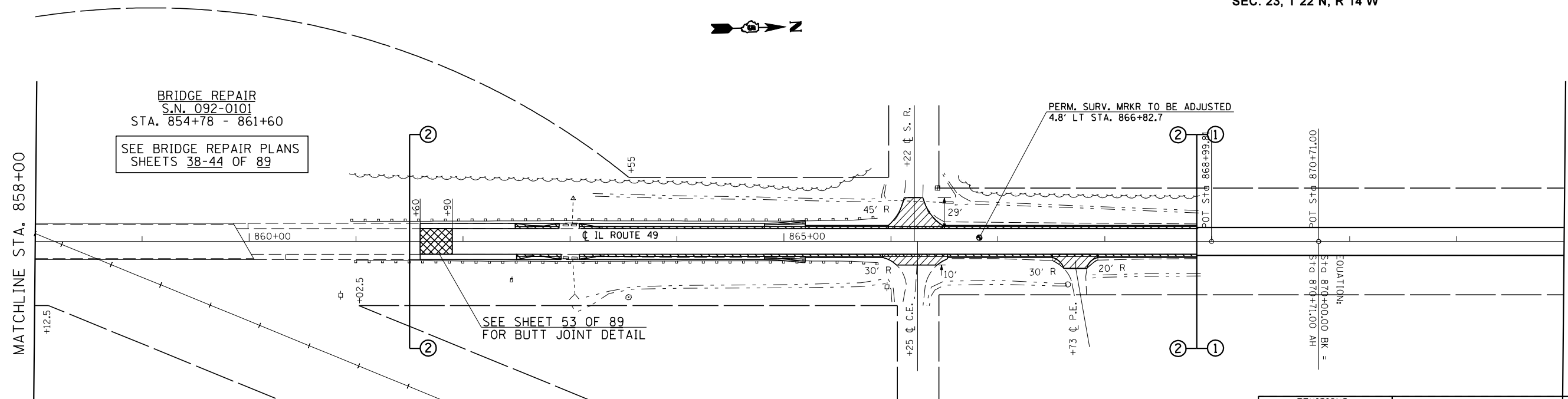
SEE BRIDGE REPAIR PLANS SHEETS 38-44 OF 89

- HMA SURFACE REMOVAL - BUTT JOINT
- INCIDENTAL HMA RESURFACING

SEC. 25, T 22 N, R 14 W

SEC. 26, T 22 N, R 14 W

SEC. 23, T 22 N, R 14 W



BRIDGE REPAIR
S.N. 092-0101
STA. 854+78 - 861+60

SEE BRIDGE REPAIR PLANS SHEETS 38-44 OF 89

SEE SHEET 53 OF 89 FOR BUTT JOINT DETAIL

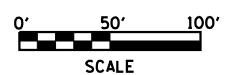
SEE SHEETS 48-50 OF 89 FOR CONC. GUTTER RECONSTRUCTION DETAIL

PERM. SURV. MRKR TO BE ADJUSTED
4.8' LT STA. 866+82.7

- HMA SURFACE REMOVAL - BUTT JOINT
- INCIDENTAL HMA RESURFACING

SEC. 25, T 22 N, R 14 W

SEC. 24, T 22 N, R 14 W



REVISIONS	
NAME	DATE

ILLINOIS DEPARTMENT OF TRANSPORTATION

**EXISTING / PROPOSED
PLAN SHEETS
STA. 844+00 - 873+00**

SCALE: VERT. _____
HORIZ. _____

DATE _____

DRAWN BY _____
CHECKED BY _____

PLOT DATE = 11/15/2007
 FILE NAME = c:\projects\05955800 (v8)\rev.plansheets.dgn
 PLOT SCALE = 1/8"=1'-0" / IN.
 USER NAME = collierb