

F.A.P. RTE.	SECTION	COUNTY	TOTAL SHEETS	SHEET NO.
721	113RS-3	DEWITT	34	1

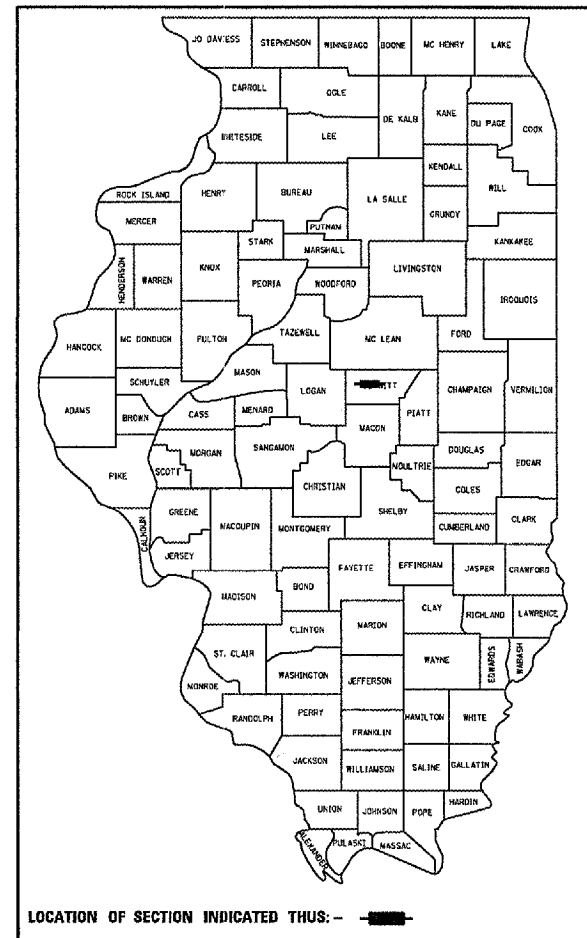
STATE OF ILLINOIS
DEPARTMENT OF TRANSPORTATION
DIVISION OF HIGHWAYS

**PROPOSED
HIGHWAY PLANS**

FAP ROUTE 721 (IL 10)
SECTION 113RS-3
DEWITT COUNTY
PROJECT ACF-0721(074)
C-95-108-02

RESURFACING (3P)
US 51 BYP TO IL 10 IN CLINTON & IL 54 TO ECL OF CLINTON

D-95-060-02



LOCATION OF SECTION INDICATED THUS: - [shaded area]

FOR INDEX OF SHEETS, SEE SHEET NO. 2
FOR SUMMARY OF QUANTITIES, SEE SHEET NO. 4 & 5

STATION EQUATION:
STA 368+50.74 (BK) =
STA 1001+09.30 (AH)

S.N. 020-9903
STA 1998+78.47

END PROJECT
STATION 2006+12

BEGIN PROJECT
STATION 361+82

END PROJECT
STATION 93+22.40

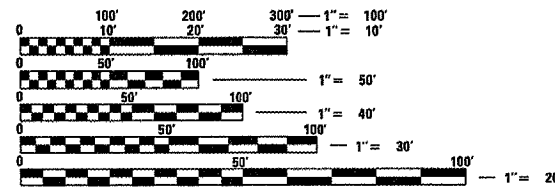
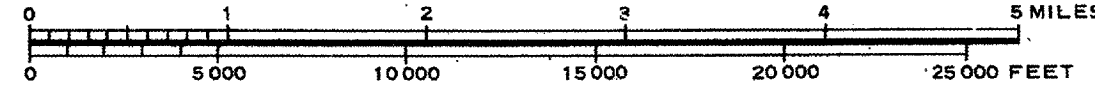
CURRENT ADT
12,400 2004

DESIGN DESIGNATION
PRINCIPAL ARTERIAL

STATION EQUATION:
STA 1036+60.60 (BK) =
STA 1138+80.66 (AH)

STATION EQUATION:
STA 1167+64.67 (BK) =
STA 1997+27.00 (AH)

STATION EQUATION:
POT STA 1999+99.88 (54/10)
= PC STA 23+41.00 (IL 10)



FULL SIZE PLANS HAVE BEEN PREPARED USING STANDARD ENGINEERING SCALES. REDUCED SIZED PLANS WILL NOT CONFORM TO STANDARD SCALES. IN MAKING MEASUREMENTS ON REDUCED PLANS, THE ABOVE SCALES MAY BE USED.

J.U.L.I.E.
JOINT UTILITY LOCATION INFORMATION FOR EXCAVATION
1-800-892-0123 (CLINTONIA TOWNSHIP)

CONTRACT NO. 70266

TOTAL LENGTH OF SECTION & PROJECT = 14,496.45 FEET = 2.746 MILES
NET LENGTH OF SECTION & PROJECT = 14,496.45 FEET = 2.746 MILES

STATE OF ILLINOIS
DEPARTMENT OF TRANSPORTATION
DIVISION OF HIGHWAYS

SUBMITTED 10/12/07

Joseph E. Peave
DEPUTY DIRECTOR OF HIGHWAYS, REGION THREE ENGINEER

Eric E. Hamm
ENGINEER OF DESIGN AND ENVIRONMENT

Christine M. Reed
DIRECTOR OF HIGHWAYS, CHIEF ENGINEER

**PRINTED BY THE AUTHORITY
OF THE STATE OF ILLINOIS**

PROJECT ENGINEER: KENSIL A. GARNETT (217)465-4181
SQUAD LEADER: ROBERT M. NELSON
DESIGNER: MATTHEW W. MURPHY

PLOT DATE = 10/12/07
FILE NAME = c:\p\projects\70266\cover-sheet.dgn
PLOT SCALE = 43.198" / 1"
USER NAME = calliebw