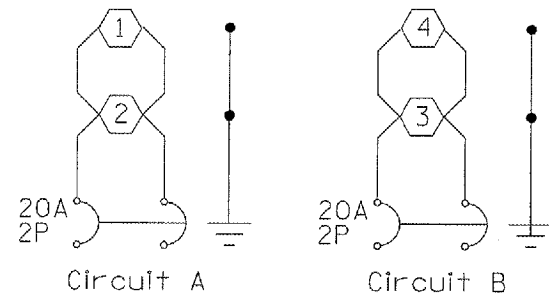


CIRCUIT DETAIL



All wire size is #8 copper

REMOVE EXIST LIGHTING UNIT - NO SALVAGE

LOCATION	EACH
<u>N. APPROACH</u>	
STA. 334+33.4 79.4' RT.	1
* STA. 332+54.1 37.3' RT.	1
* STA. 330+24.8 37.0' RT.	1
<u>E. APPROACH</u>	
STA. 1679+59.3 77.7' LT.	1
STA. 1681+25.8 40.1' LT.	1
* STA. 1683+96.7 35.9' LT.	1
<u>S. APPROACH</u>	
* STA. 1481+95.9 38.8' RT.	1
STA. 1484+28.9 79.6' RT.	1
<u>W. APPROACH</u>	
* STA. 1674+03.2 35.6' RT.	1
STA. 1676+76.7 40.8' RT.	1

TOTAL = 10 EACH

REMOVE EXIST LIGHTING UNIT - SALVAGE

LOCATION	EACH
<u>S. APPROACH</u>	
* STA. 1480+12.4 38.2' RT.	1
<u>W. APPROACH</u>	
STA. 1678+35.2 69.4' RT.	1
TOTAL = 2 EACH	

* EXISTING LIGHTING UNIT NOT SHOWN ON PLAN SHEET.

BILL OF MATERIALS

U.S. 36 & U.S. 150 / IL 1

ITEM	UNIT	QUANTITY
ELECTRIC SERVICE INSTALLATION	EACH	1
CONDUIT PUSHED, 2" DIA., INTERMEDIATE METAL	FOOT	270
UNIT DUCT, 600V, 2-1C NO.8, 1/C NO.8 GROUND, (XLP-TYPE USE), 3/4" DIA. POLYETHYLENE	FOOT	544
TRENCH AND BACKFILL FOR ELECTRICAL WORK	FOOT	244
LUMINAIRE, SODIUM VAPOR, HORIZONTAL MOUNT, 250 WATT	EACH	4
LIGHT POLE, ALUMINUM, 40 FT. M.H., 12 FT. DAVIT ARM	EACH	4
LIGHT POLE FOUNDATION, 30" DIAMETER	FOOT	24
BREAKAWAY DEVICE, COUPLING, WITH STAINLESS STEEL SCREEN	EACH	16
REMOVAL OF EXISTING LIGHTING UNIT, SALVAGE	EACH	2
REMOVAL OF EXISTING LIGHTING UNIT, NO SALVAGE	EACH	10
POLE FOUNDATION, REMOVED	EACH	12
REMOVAL OF LIGHTING CONTROLLER	EACH	1
REMOVAL OF ELECTRIC SERVICE INSTALLATION	EACH	1
LIGHTING CONTROLLER PHOTOCELL RELAY, SPECIAL	EACH	1