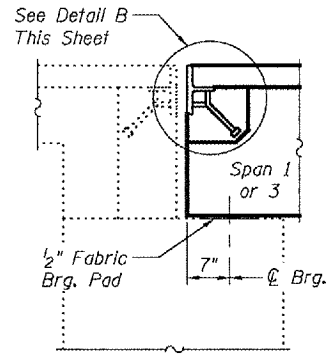
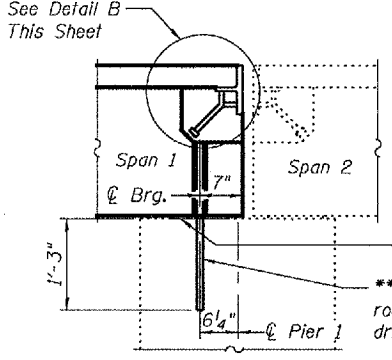


STATE OF ILLINOIS  
DEPARTMENT OF TRANSPORTATION

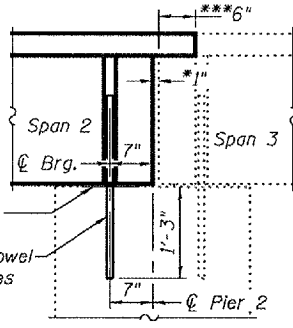
ROUTE NO.	SECTION	COUNTY	TOTAL SHEETS	SHEET NO.	SHEET NO. 3 3 SHEETS
FA 53		McLean	26	21	
FED. ROAD DIST. NO. 7		ILLINOIS	FED. AID PROJECT-		
Contract Number: 70669					



**TYPICAL SECTION AT ABUTMENTS**

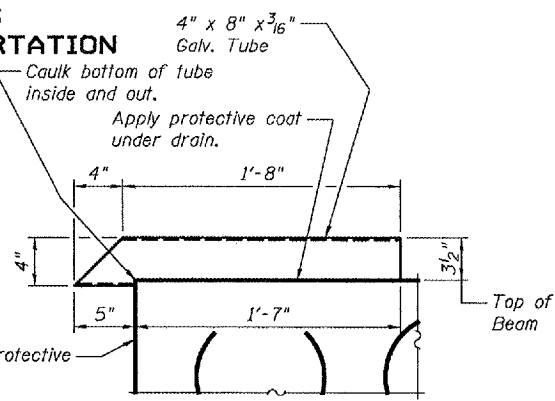


**SECTION PIER 1 AT BEAMS 1 AND 14**

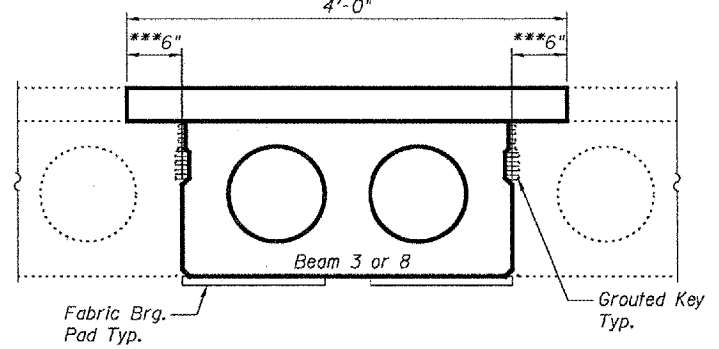


**SECTION PIER 2 AT BEAMS 3 AND 8**

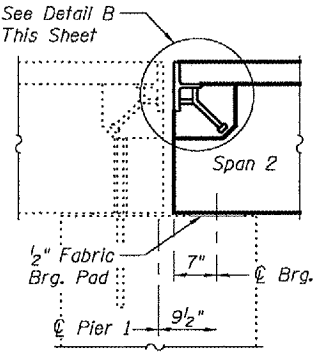
\*1" Joint shall be filled with non-shrink grout. Dimension may vary to accommodate tolerance in beam lengths.  
\*\*Existing dowel rods are to be burned off, ground flush, and sealed with epoxy prior to placement of new beams. Cost included in Removal of Existing PPC Deck Beams. After beams have been erected holes shall be drilled into cap and dowel rods placed. Dowel holes shall be filled with non-shrink grout to top of beam and allowed to cure a minimum of 24 hours prior to grouting the shear keys.  
\*\*\*Limits of HMA Removal.



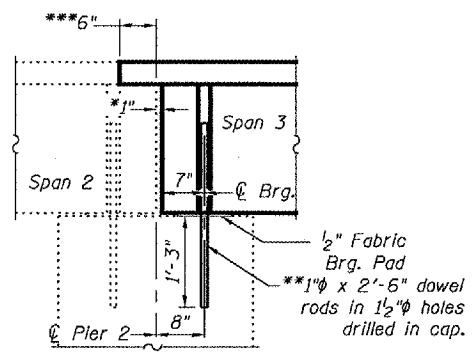
**DRAIN DETAIL**



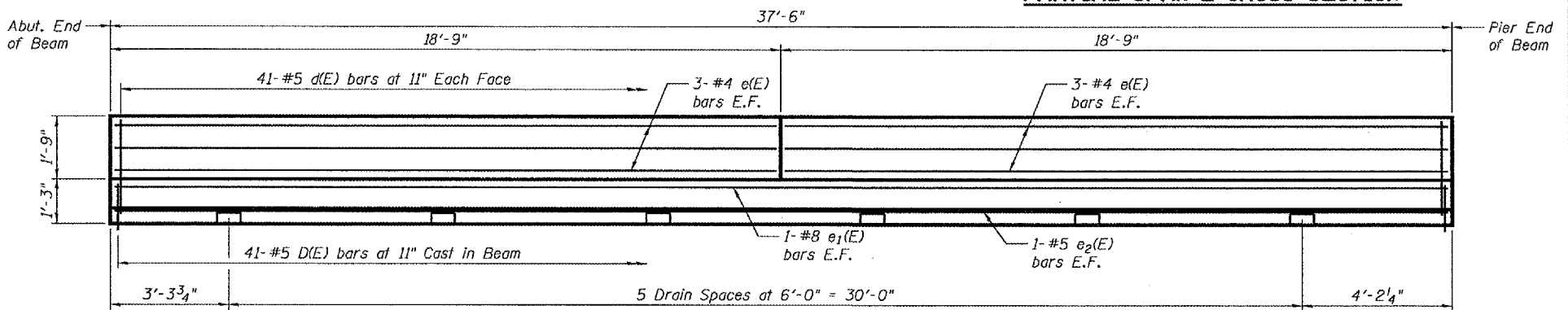
**PARTIAL SPAN 2 CROSS SECTION**



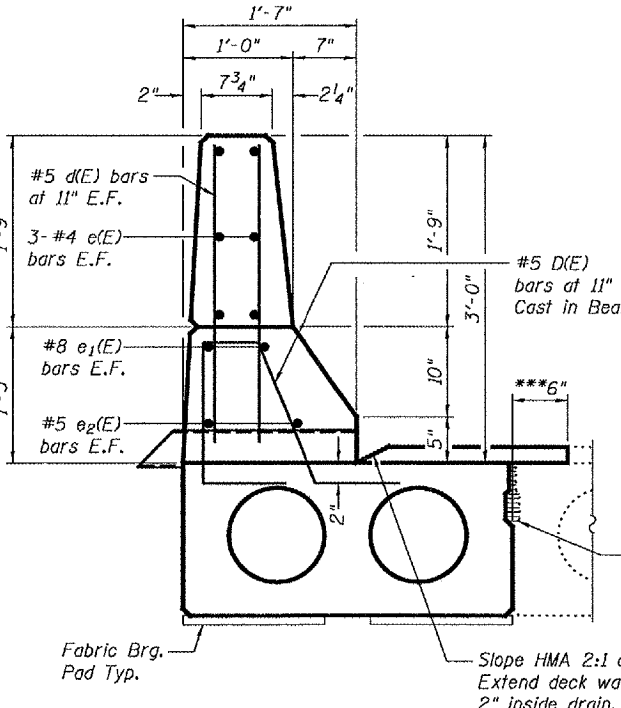
**SECTION PIER 1 AT BEAMS 3 AND 8**



**SECTION PIER 2 AT BEAM 1**

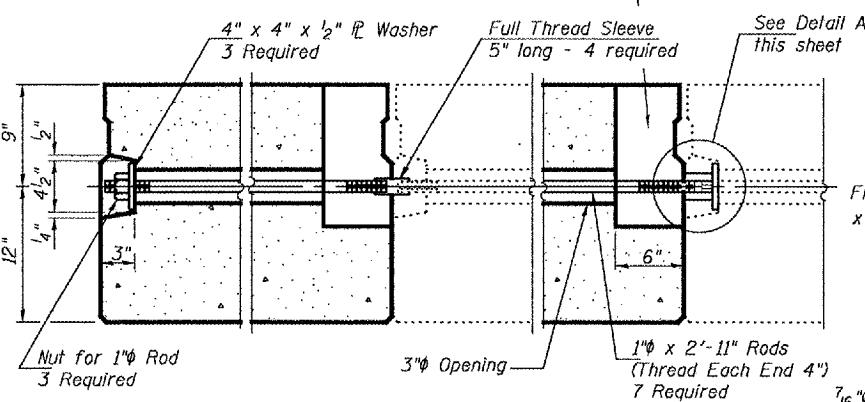


**PARAPET ELEVATION**

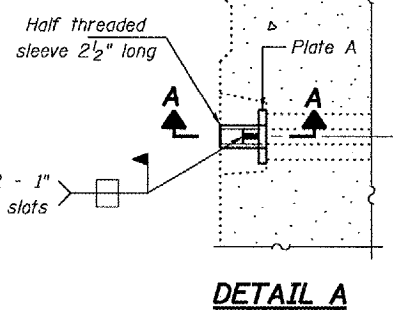


**TYPICAL FASCIA BEAM AND PARAPET SECTION**

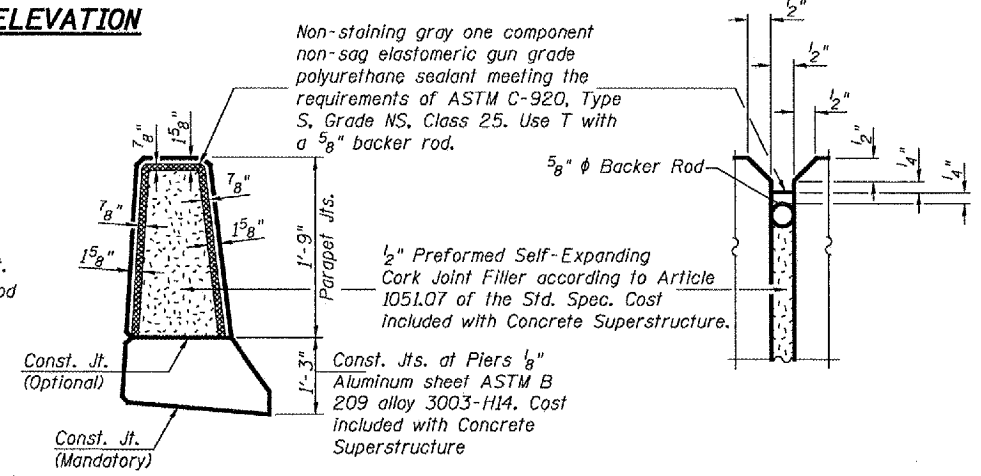
6" x 6" x 11 1/2" Blockout to be filled with Class BS Concrete after Beams have been installed. Cost shall be included in the cost of "Concrete Superstructure". Omit on outside of fascia beams.



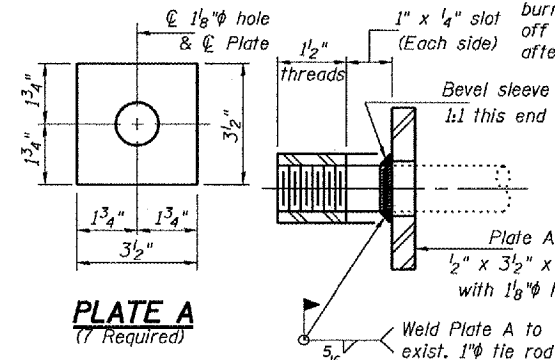
**TYPICAL TRANSVERSE TIE ASSEMBLY**



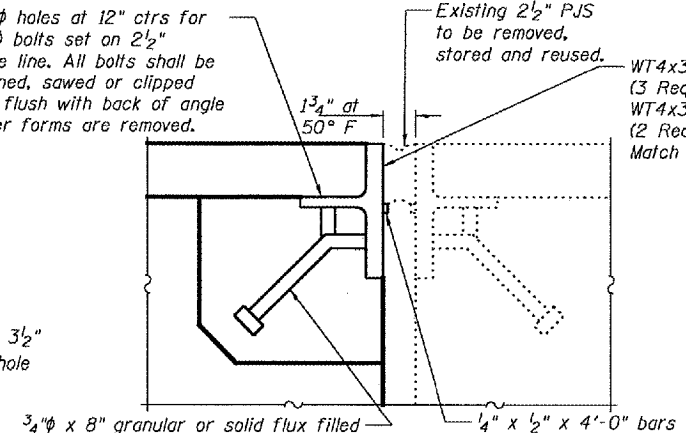
**DETAIL A**



**PARAPET JOINT DETAILS**



**PLATE A (7 Required)**



**SECTION A-A (7 Required)**

Existing 1/2 inch PJS to be removed, stored and reused.

**DETAIL B**

WT4x33.5 x 1'-4 3/4" (3 Req'd at Abutments)  
WT4x33.5 x 3'-0" (2 Req'd at Pier 1)  
Match existing height.

**BILL OF MATERIAL**

Bar	No.	Size	Length	Shape
a(E)	21	#5	2'-9"	—
d(E)	246	#5	2'-9"	—
e(E)	36	#4	18'-5"	—
e1(E)	6	#8	37'-3"	—
e2(E)	6	#5	37'-3"	—
Concrete Removal		Cu. Yd.	12.8	
Concrete Superstructure		Cu. Yd.	12.8	
Reinforcement Bars, Epoxy Coated		Lbs.	2,040	

Bars indicated thus 1 x 2-#5 etc. indicates 1 line of bars with 2 lengths per line.

**REPAIR DETAILS**  
FA 53  
MCLEAN COUNTY  
SN 057-0091

DESIGNED	S.J.B.
CHECKED	A.T.H.
DRAWN	Drew Christopher
CHECKED	S.J.B. A.T.H.

November 5, 2007  
EXAMINED *Carl Proyer*  
ENGINEER OF STRUCTURAL SERVICES  
PASSED *Ralph E. Anderson*  
ENGINEER OF BRIDGES AND STRUCTURES