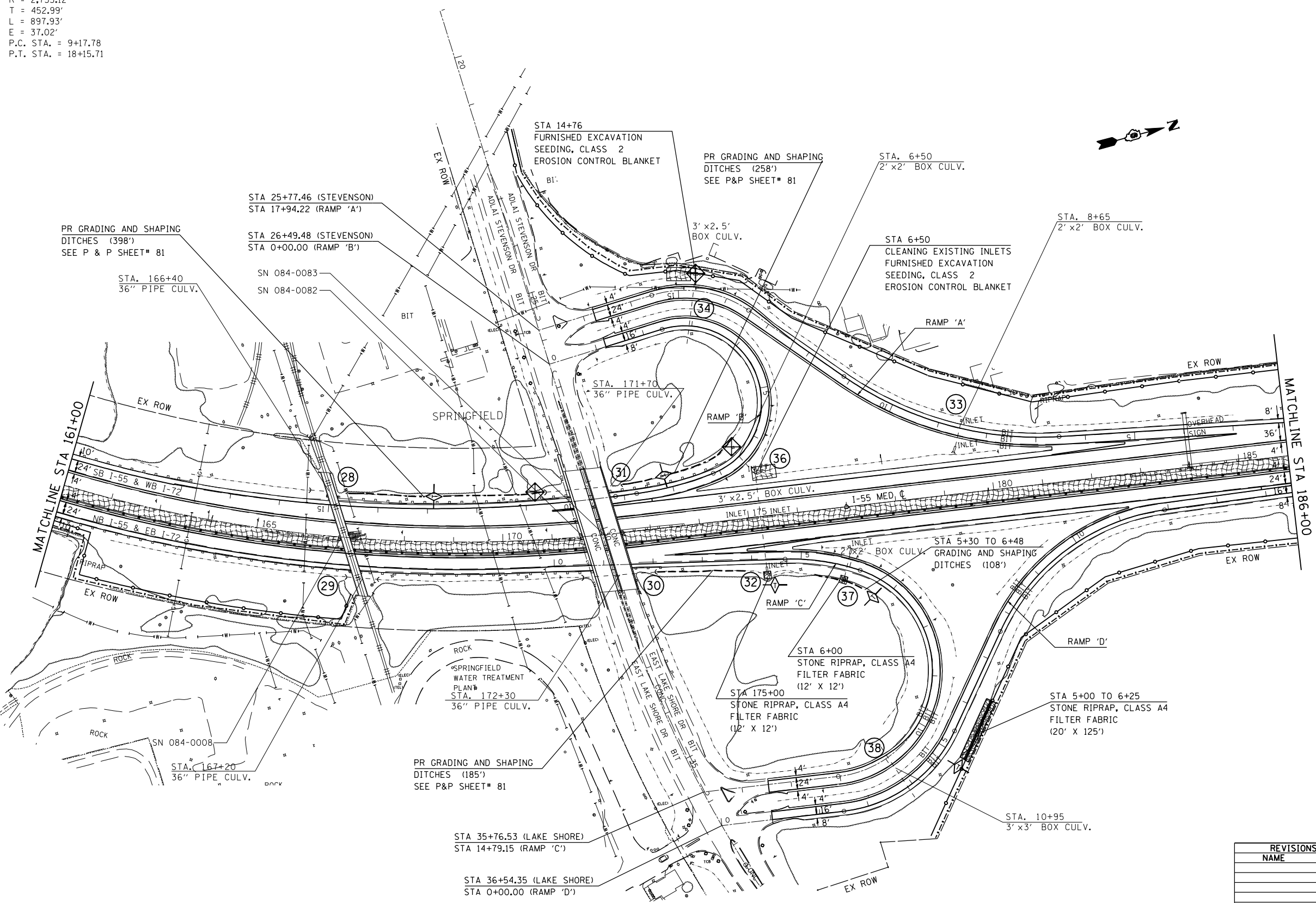


F.A.I. RTE.	SECTION	COUNTY	TOTAL SHEETS	SHEET NO.
*	**	SANGAMON	248	102

STA. TO STA.
 FED. ROAD DIST. NO. ILLINOIS FED. AID PROJECT
 * FA155(I-55), FA172(I-72), FAP666(I-55 BUS)
 ** D6 INTERSTATE RS,BR,M CAB 2008

EXIST. CURVE 105
 PI STA. = 13+70.77
 $\Delta = 18^\circ 41' 13''$ (RT)
 $D = 2^\circ 04' 52''$
 $R = 2,753.12'$
 $T = 452.99'$
 $L = 897.93'$
 $E = 37.02'$
 P.C. STA. = 9+17.78
 P.T. STA. = 18+15.71

SECTION 12, T15N, R5W, 3rd PM



- LEGEND**
- TEMPORARY DITCH CHECKS
 - INLET AND PIPE PROTECTION
 - EROSION CONTROL BLANKET
 - TEMP EROSION CONTROL SEEDING
 - STONE RIPRAP
 - DRAINAGE STRUCTURE NUMBER

REVISIONS	
NAME	DATE

ILLINOIS DEPARTMENT OF TRANSPORTATION
EROSION CONTROL AND DRAINAGE PLAN SHEETS
 FA155(I-55), FA172(I-72), FAP666(I-55 BUS)
 SECTION D6 INTERSTATE RS,BR,M CAB 2008
 SANGAMON COUNTY
 SCALE: 1" = 100'
 DATE _____ DRAWN BY TEC
 CHECKED BY _____

PLOT DATE = Oct-22-2007 08:28:57AM
 FILE NAME = c:\p\projects\652882\sh\erosion2.dgn
 PLOT SCALE = 211.7647 / IN.
 USER NAME = laughlinr1