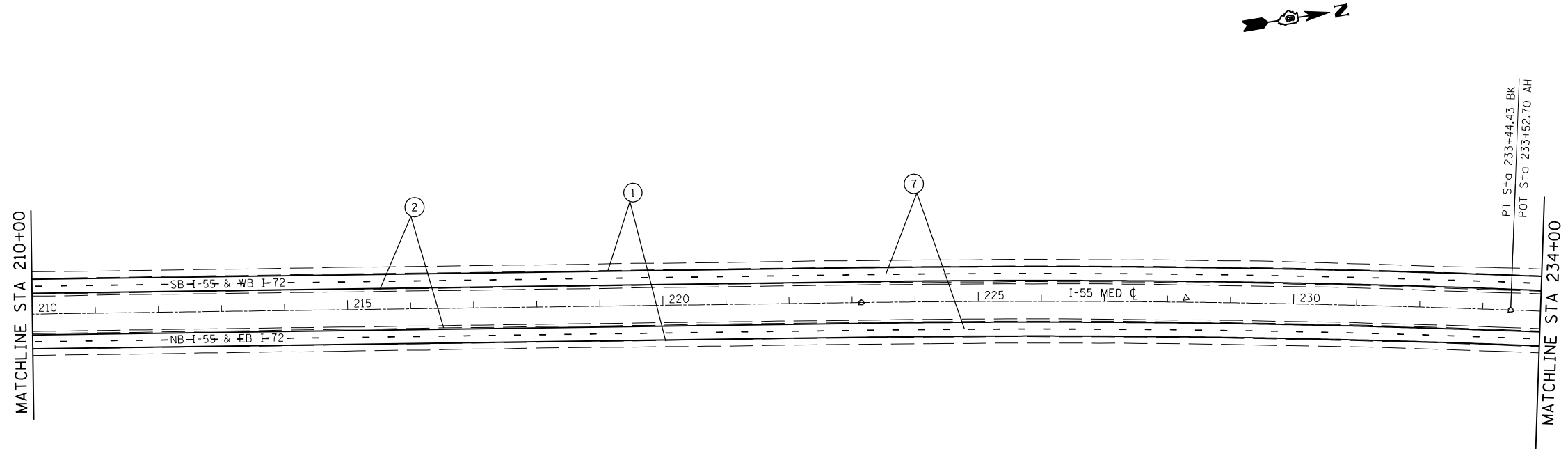


F.A.I. RTE.	SECTION	COUNTY	TOTAL SHEETS	SHEET NO.
*	**	SANGAMON	248	167

STA.		TO STA.	
FED. ROAD DIST. NO.	ILLINOIS	FED. AID PROJECT	
* FA155(I-55), FA172(I-72), FAP666(I-55 BUS) ** D6 INTERSTATE RS,BR,M CAB 2008			

SECTION 12, T15N, R5W, 3rd PM



PAVEMENT MARKING LEGEND

- | | |
|---|----------------------|
| ① URETHANE PAVEMENT MARKING - LINE 5" | (SOLID WHITE LINE) |
| ② URETHANE PAVEMENT MARKING - LINE 5" | (SOLID YELLOW LINE) |
| ③ URETHANE PAVEMENT MARKING - LINE 6" | (SOLID WHITE LINE) |
| ④ URETHANE PAVEMENT MARKING - LINE 5" | (WHITE SKIP DASH) |
| ⑤ PAINT PAVEMENT MARKING - LINE 5" | (DOUBLE YELLOW LINE) |
| ⑥ PREFORMED PLASTIC PAVEMENT MARKING, TYPE B - LETTER AND SYMBOLS | (WHITE SYMBOLS) |
| ⑦ PREFORMED PLASTIC PAVEMENT MARKING, TYPE B - LINE 5" | (WHITE SKIP DASH) |
| ⑧ PREFORMED PLASTIC PAVEMENT MARKING, TYPE B - LINE 8" | (SOLID WHITE LINE) |
| ⑨ PREFORMED PLASTIC PAVEMENT MARKING, TYPE B - LINE 12" | (WHITE DIAGONAL) |

REVISIONS	
NAME	DATE

ILLINOIS DEPARTMENT OF TRANSPORTATION
**PAVEMENT MARKING
 PLAN SHEET**
 FA155(I-55), FA172(I-72), FAP666(I-55 BUS)
 SECTION D6 INTERSTATE RS,BR,M CAB 2008
 SANGAMON COUNTY
 SCALE: 1" = 100'
 DATE _____ DRAWN BY TEC
 CHECKED BY _____

PLOT DATE = 08/22/2007 08:22:46AM
 FILE NAME = c:\p\projects\652882\plan_6.pwdgn
 PLOT SCALE = 211.7647 / IN.
 USER NAME = laughlin-1