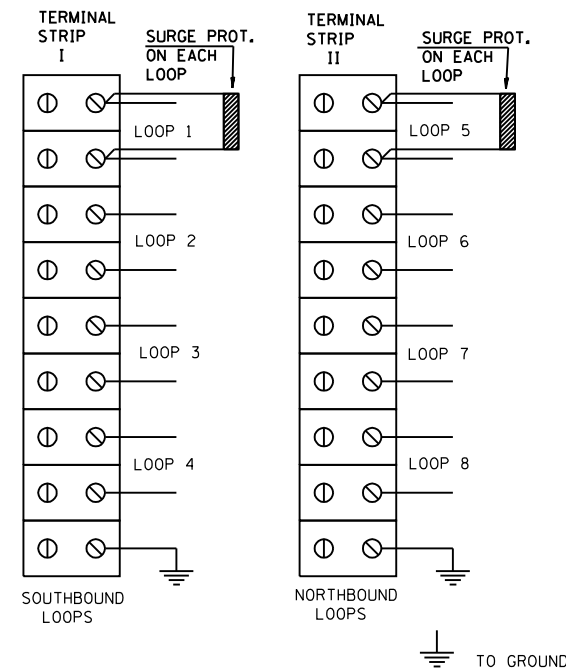
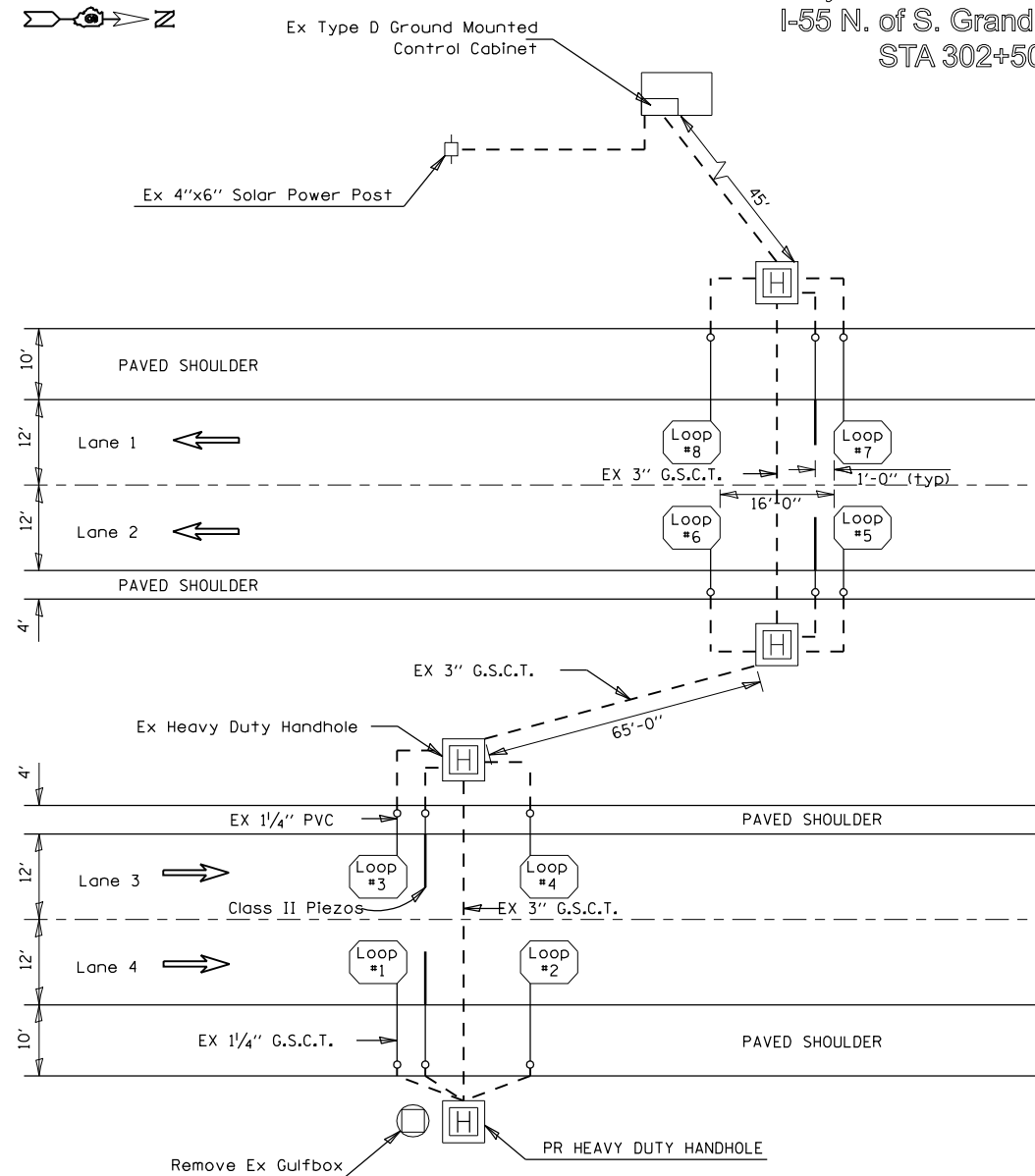
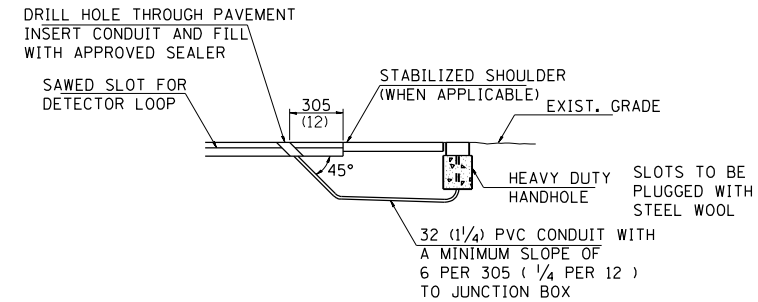


F.A.I. RTE.	SECTION	COUNTY	TOTAL SHEETS	SHEET NO.
*	**	SANGAMON	248	184
STA.		TO STA.		
FED. ROAD DIST. NO. ILLINOIS FED. AID PROJECT				
* FA155(I-55), FA172(I-72), FAP666(I-55 BUS)				
** D6 INTERSTATE RS,BR,M CAB 2008				

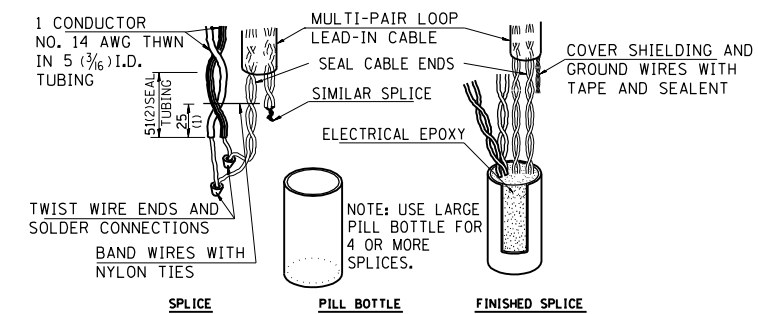
Layout for ATR Site # 6999
I-55 N. of S. Grand Ave. Exit
STA 302+50



PHENOLIC PLATE, TERMINAL STRIPS & BNC CONNECTORS IN CABINET



DETECTOR LOOP LEAD-IN DETAIL

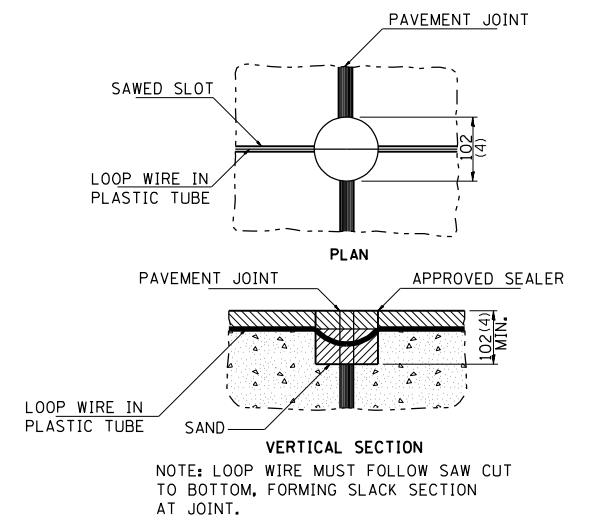


BOTTLE SPLICE DETAIL

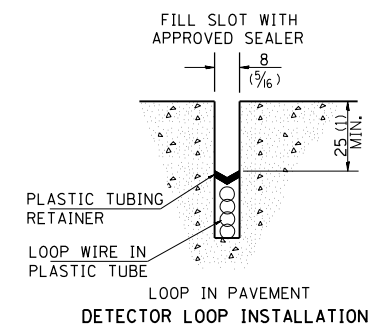
NOTES:

- ONE SURGE PROTECTOR FOR EACH LOOP
SOURCE: SURRESTOR - PART NO. SRA-16 / 8 REQUIRED
- TERMINAL STRIPS SHALL BE MOUNTED ON ALUMINUM PLATE
- ALL CONNECTIONS MUST BE INSULATED FROM EACH OTHER
- PIEZO CONNECTIONS AND TERMINAL STRIPS SHALL BE LABELED AS SHOWN

CONTACT RAMON TAYLOR OF OP&P AT 217-782-2065 BEFORE PIEZO INSTALLATION AND LAYOUT OF DIVE HOLES.



DETECTOR LOOP DETAIL AT PAVEMENT JOINT OR PAVEMENT CRACK



DETECTOR LOOP INSTALLATION

NOTE: NOT TO SCALE
ALL DIMENSIONS ARE IN MILLIMETERS (INCHES) UNLESS OTHERWISE SHOWN.

SCHEDULE OF QUANTITIES			
CODE NO.	ITEM	UNIT	QUANTITY
81012400	CONDUIT IN TRENCH, 1 1/4" DIA., PVC	FOOT	147
81400200	HEAVY-DUTY HANDHOLE	EACH	1
81500130	GULFBOX JUNCTION REMOVAL	EACH	1
87900200	DRILL EXISTING HANDHOLE	EACH	9
88600400	DETECTOR LOOP, SPECIAL	FOOT	294
	PIEZO ELECTRIC SENSOR CABLE IN PAVEMENT	FOOT	26
X0300780	PIEZO ELECTRIC SENSOR CABLE IN CONDUIT	FOOT	596
X0323014	ELECTRIC CABLE IN CONDUIT, CONOGA-30003	FOOT	554
X0323015	PIEZO ELECTRIC AXLE SENSOR, CLASS II	FOOT	28

REVISIONS	
NAME	DATE

ILLINOIS DEPARTMENT OF TRANSPORTATION
TRAFFIC COUNTER DETAILS
FA155(I-55), FA172(I-72), FAP666(I-55 BUS)
SECTION D6 INTERSTATE RS,BR,M CAB 2008
SANGAMON COUNTY

SCALE: 1" = 100'
DATE
DRAWN BY TEC
CHECKED BY

PLOT DATE = Nov-19-2007 08:25:19 AM
FILE NAME = c:\projects\652882\shc.tbl count.dgn
PLOT SCALE = 1/8"=1' / IN.
USER NAME = laughlin-1