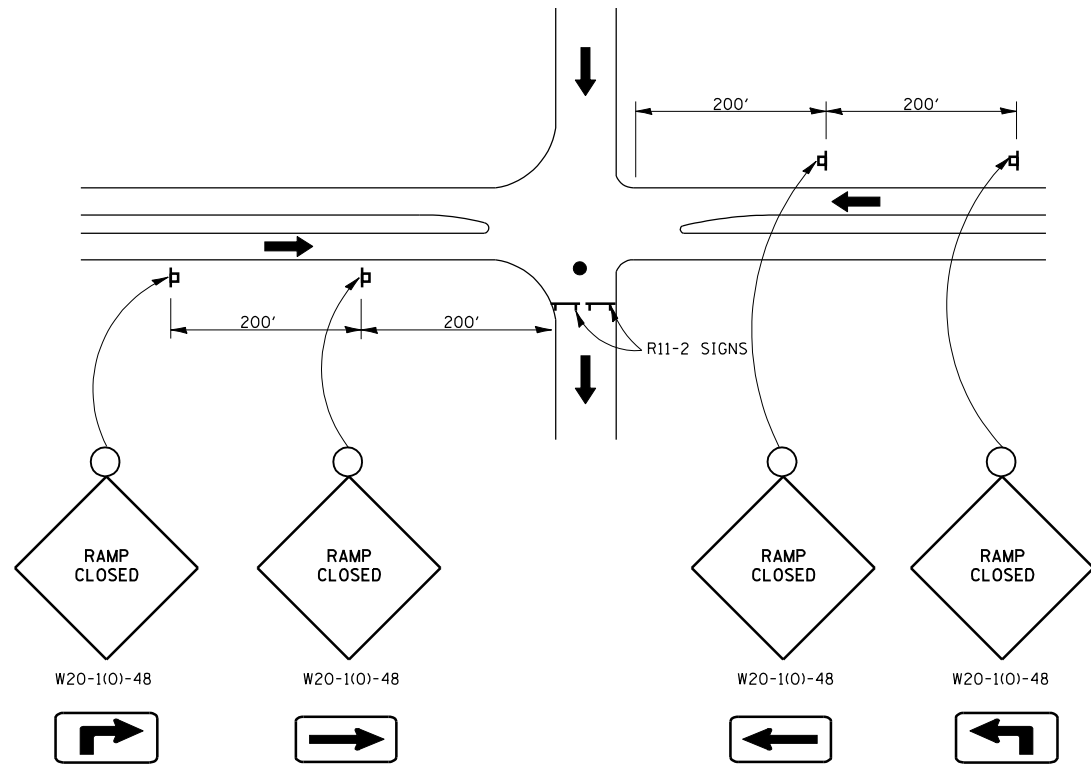
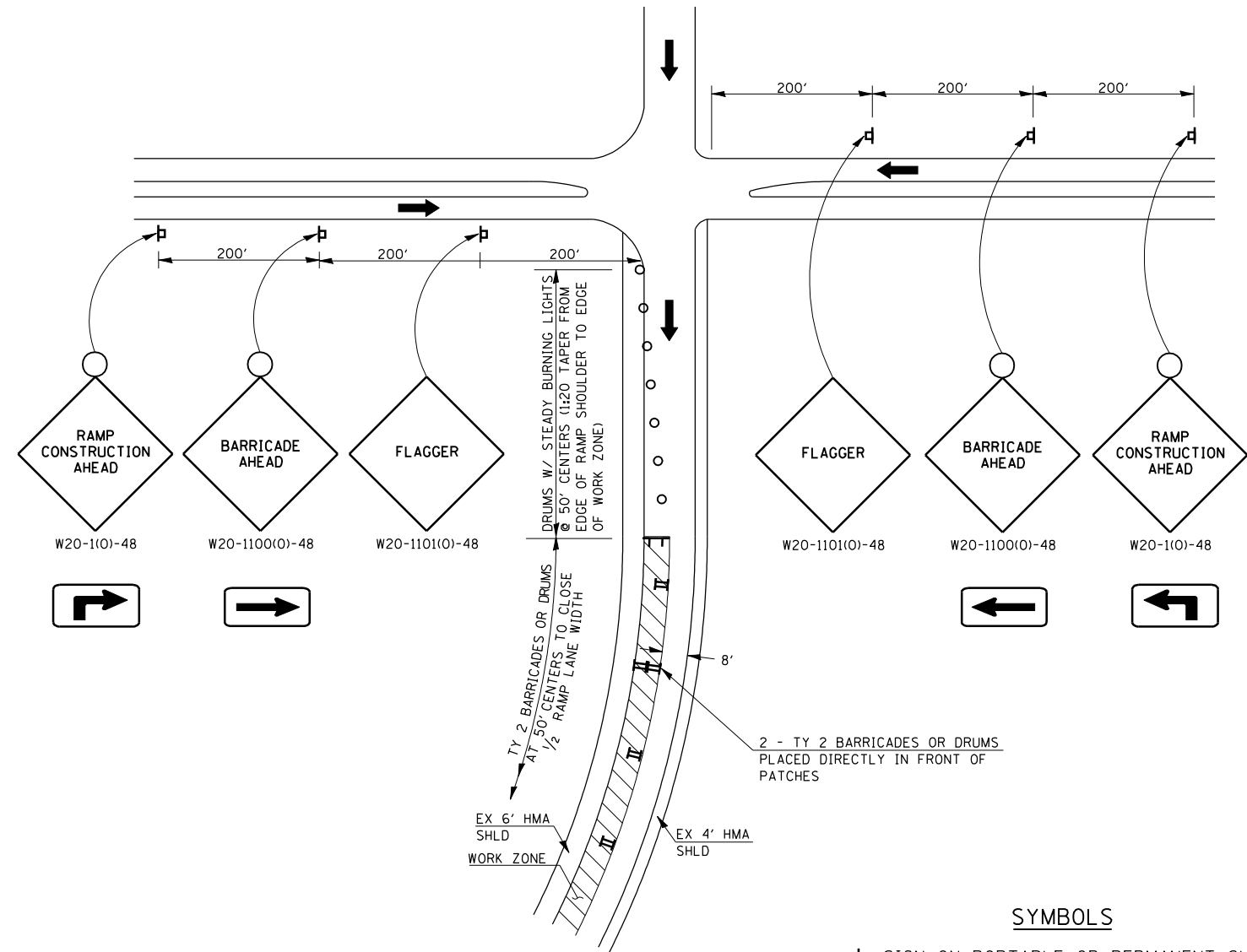


F.A.I. RTE.	SECTION	COUNTY	TOTAL SHEETS	SHEET NO.
*	**	SANGAMON	248	190
STA.		TO STA.		
FED. ROAD DIST. NO.	ILLINOIS	FED. AID PROJECT		
* FA155(I-55), FA172(I-72), FAP666(I-55 BUS) ** D6 INTERSTATE RS,BR,M, CAB 2008				



ENTRANCE RAMP CLOSURE DETAIL
 FOR PAVEMENT MILLING, HMA RESURFACING,
 AND AGGREGATE SHOULDERS



SYMBOLS

- ▣ SIGN ON PORTABLE OR PERMANENT SUPPORT
- ⌄ TYPE 3 BARRICADE WITH TWO FLASHING AMBER LIGHTS AND ROAD CLOSURE SIGN
- DRUM WITH STEADY BURNING LIGHT
- FLAGGER WITH TRAFFIC CONTROL SIGN
- ➔ TRAFFIC FLOW
- II TYPE 2 PLASTIC BARRICADE

NOTES

ADVANCED WARNING SIGNS (RAMP CONSTRUCTION AHEAD, BARRICADE AHEAD, AND FLAGGER AHEAD) MAY BE LOCATED ON THE RAMP IF THE WORK ZONE ALLOWS THE PROPER SIGN SPACING.

REVISIONS	
NAME	DATE

ILLINOIS DEPARTMENT OF TRANSPORTATION
TRAFFIC CONTROL & PROTECTION FOR RAMPS
 FA155(I-55), FA172(I-72), FAP666(I-55 BUS)
 SECTION D6 INTERSTATE RS,BR,M, CAB 2008
 SANGAMON COUNTY
 SCALE: _____ DRAWN BY _____
 DATE _____ CHECKED BY _____

PLOT DATE = 08/22/2007 08:23:11AM
 FILE NAME = c:\p\projects\6522882\shl.tbl\tbl.rmp.dgn
 PLOT SCALE = 1/8"=1'-0" / IN.
 USER NAME = laughlin-1