

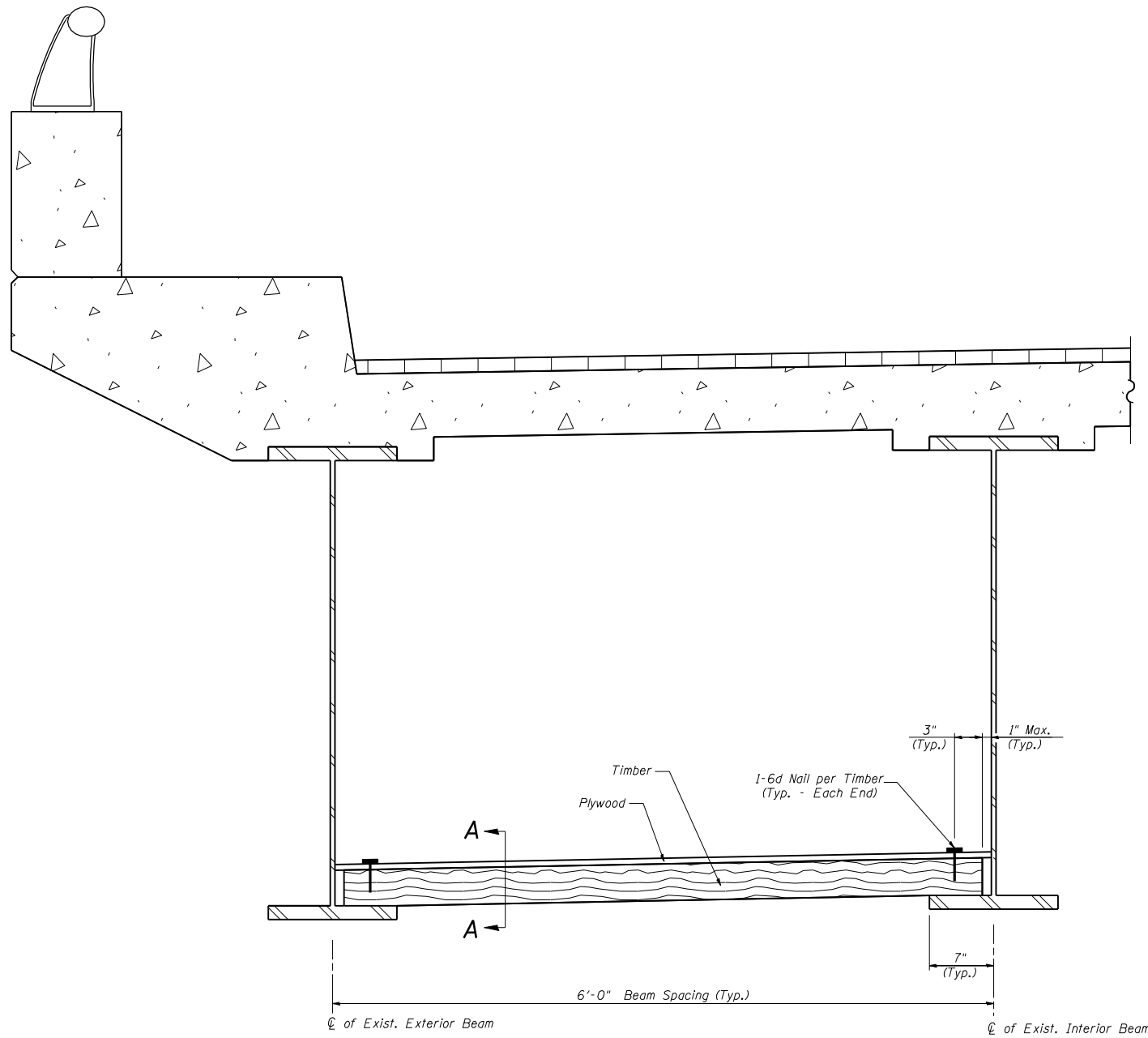
STATE OF ILLINOIS
DEPARTMENT OF TRANSPORTATION

CONTRACT NO. 72659				
F.A.I. RTE.	SECTION	COUNTY	TOTAL SHEETS	SHEET NO.
*	**	SANGAMON	248	212
FED. ROAD DIST. NO.		ILLINOIS	FED. AID PROJECT	
* F.A.I. 55, F.A.I. 72, F.A.P. 666				
** D6 Interstate RS, BR, M CAB 2008				

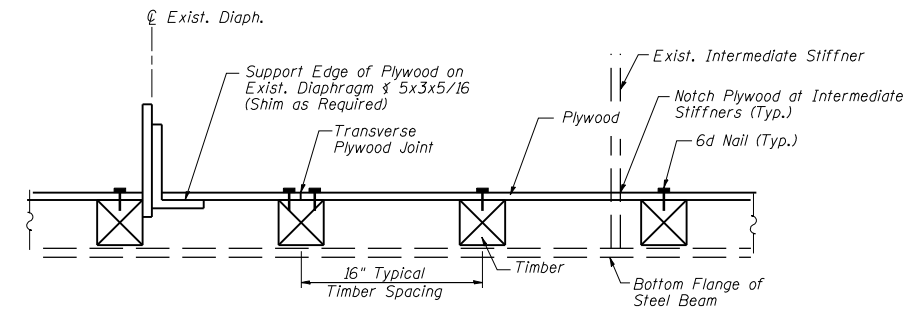
Sheet No. 2
of 2 Sheets

GENERAL NOTES

See Special Provisions for Protective Shield (Permanent).
See Sheet 1 of 2 for Limits of Protective Shield (Permanent).
Plywood shall be 3/8" Standard C-D Group 1 Exterior Glue (CDX) Plywood.
Plywood shall be placed such that the face grain is perpendicular to the timber supports. When less than a full sheet (4' width) of plywood is used, the width of the strip used shall not be less than 2'.
Transverse plywood joints shall be supported by timbers.
Timber sizes shown are nominal sizes and have been determined using allowable stresses with all adjustment factors necessary for the design live load of 200 psf.
Timbers shall be placed perpendicular to existing beams.
When 6" x 4" timbers are used, they shall be placed such that the wide face is horizontal and the narrow face is vertical.
The minimum F_b and F_v values shown are the tabulated design values given in the AASHTO Standard Specifications for Highway Bridges without adjustment factors applied.
Timbers shall be one of the following:
a) 4" x 4" with minimum $F_b = 1300\text{psi}$; $F_v = 100\text{psi}$
b) 6" x 4" with minimum $F_b = 900\text{psi}$; $F_v = 65\text{psi}$
c) 6" x 6" with minimum $F_b = 425\text{psi}$; $F_v = 40\text{psi}$



TYPICAL SECTION THRU PROTECTIVE SHIELD (PERMANENT)



SECTION A-A

BILL OF MATERIAL

Item	Unit	Quantity
Protective Shield (Permanent)	Sq. Yd.	178

PROTECTIVE SHIELD
F.A.I. 55, F.A.I. 72, F.A.P. 666
Section D6 Interstate R5, BR, M CAB 2008
Sangamon County
NB BU-55 Over SB I-55
S.N. 084-0028