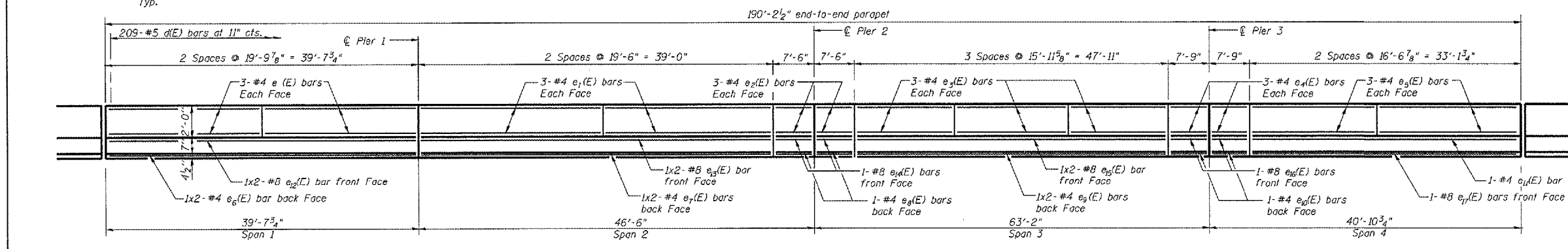


PLAN

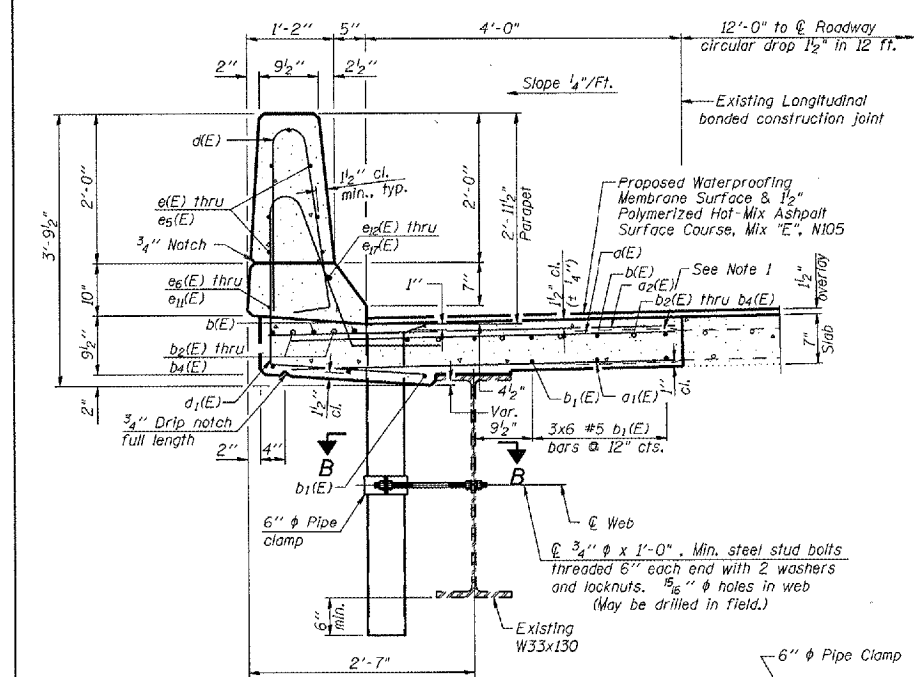
**SUPERSTRUCTURE
 BILL OF MATERIAL
 (Includes Wingwalls)**

Bar	No.	Size	Length	Shape
d1(E)	327	#6	4'-9"	
a1(E)	327	#6	4'-5"	
a2(E)	163	#6	4'-0"	
b(E)	56	#5	29'-1"	
b1(E)	36	#5	33'-6"	
b2(E)	6	#6	13'-8"	
b3(E)	6	#6	20'-0"	
b4(E)	6	#6	19'-8"	
b5(E)	32	#5	8'-0"	
d(E)	229	#5	5'-11"	
d1(E)	209	#5	7'-4"	
d2(E)	20	#5	7'-1"	
e(E)	12	#4	19'-6"	
e1(E)	12	#4	19'-2"	
e2(E)	12	#4	7'-2"	
e3(E)	18	#4	15'-7"	
e4(E)	12	#4	7'-5"	
e5(E)	12	#4	16'-3"	
e6(E)	2	#4	20'-7"	
e7(E)	2	#4	20'-2"	
e8(E)	2	#4	7'-2"	
e9(E)	2	#4	24'-8"	
e10(E)	2	#4	7'-5"	
e11(E)	1	#4	32'-11"	
e12(E)	2	#8	22'-0"	
e13(E)	2	#8	21'-7"	
e14(E)	2	#8	7'-2"	
e15(E)	2	#8	26'-1"	
e16(E)	2	#8	7'-2"	
e17(E)	1	#8	32'-11"	
e18(E)	16	#4	8'-0"	
e19(E)	2	#8	8'-0"	
h(E)	8	#4	5'-4"	
h1(E)	36	#5	5'-4"	
Reinforcement Bars, Epoxy Coated		Pound	M110	
Concrete Superstructure		Cu. Yds.	56.1	
Floor Drains		Each	6	
Protective Coat		Sq. Yd.	90	
Concrete Removal		Cu. Yd.	50.9	
Dowel Bars		Each	18	

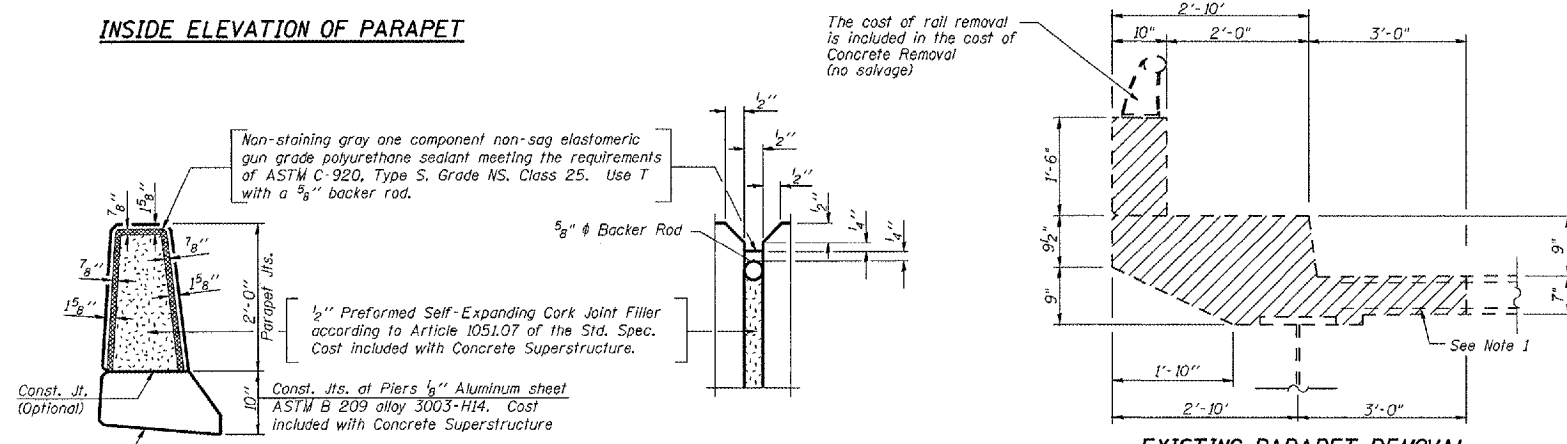
Bars indicated thus 1 x 2 - #4 etc. Indicates 1 line of bars with 2 lengths per line.



INSIDE ELEVATION OF PARAPET



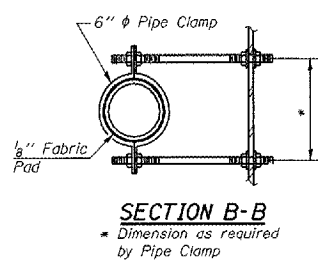
SECTION THRU PARAPET



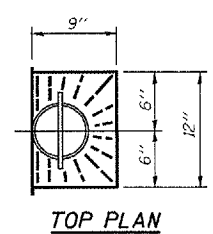
PARAPET JOINT DETAILS

EXISTING PARAPET REMOVAL

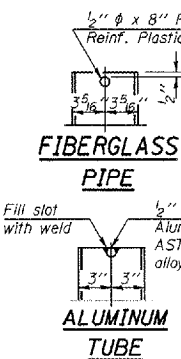
Notes:
 The exterior surfaces of the floor drains shall be painted with the finish coat as specified in the special provisions for Cleaning and Painting New Metal Structures. The exterior surfaces of the drains shall be cleaned according to Steel Structures Painting Council's Spec. SSPC-SP1 prior to painting. Fiberglass pipe shall conform to ASTM D 2996, with short-time rupture strength hoop tensile stress of 30,000 p.s.i. minimum.



SECTION B-B
 Dimension as required by Pipe Clamp

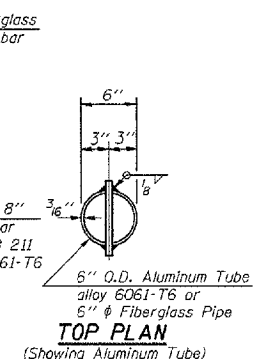


TOP PLAN

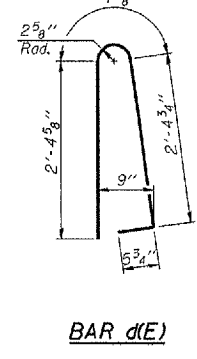


FIBERGLASS PIPE

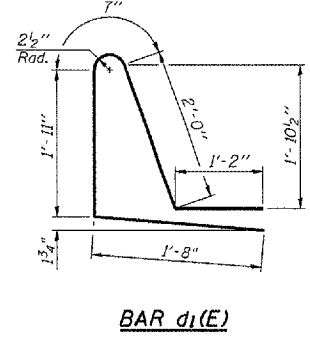
ALUMINUM TUBE



TOP PLAN (Showing Aluminum Tube)



BAR d(E)



BAR d1(E)

MINIMUM BAR LAP

- #4 bar = 1'-8"
- #5 bar = 2'-2"
- #8 bar = 4'-6"

- Notes:
- Existing reinforcement extending into new construction shall be cleaned, straightened, and incorporated into the new construction. The minimum length of bar to be left in place to lap with new d(E) bars is 2'-8". Cast included in Concrete Removal.
 - ** Limits of expansion joint replacement.

SUPERSTRUCTURE
 F.A.I. 55, F.A.I. 72, F.A.P. 666
 Section D6 Interstate R5, BR. M CAB 2008
 Sangamon County
 EB I-72 Over BU-55
 S.N. 084-0077

Rev.