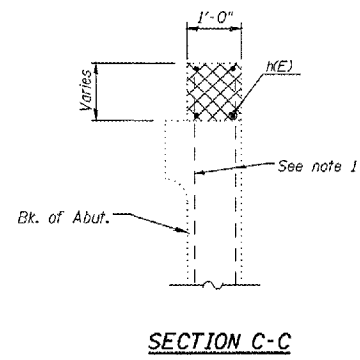
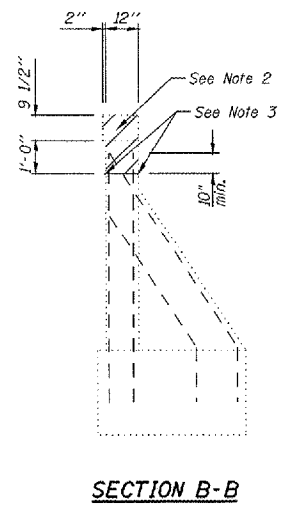
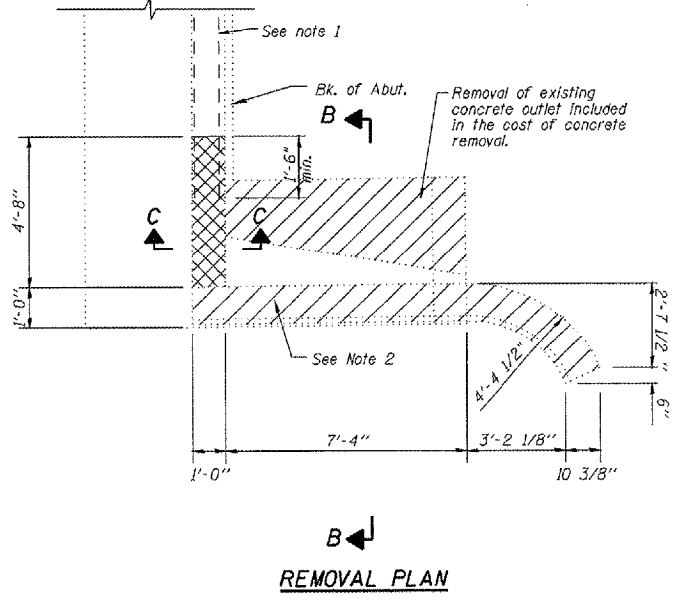
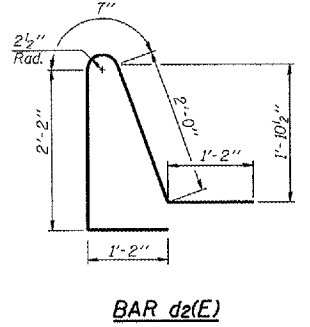
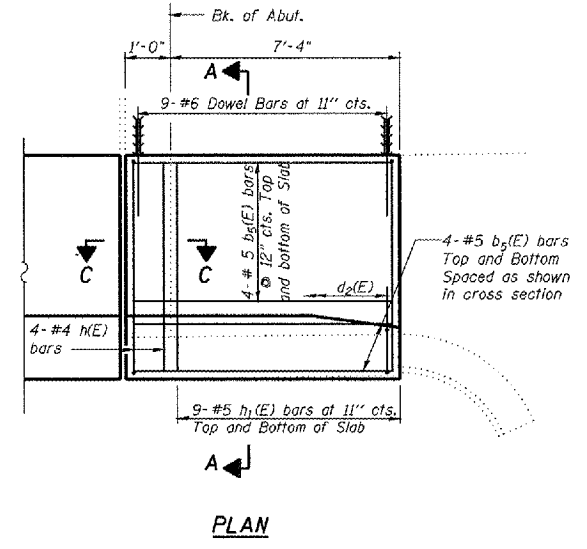
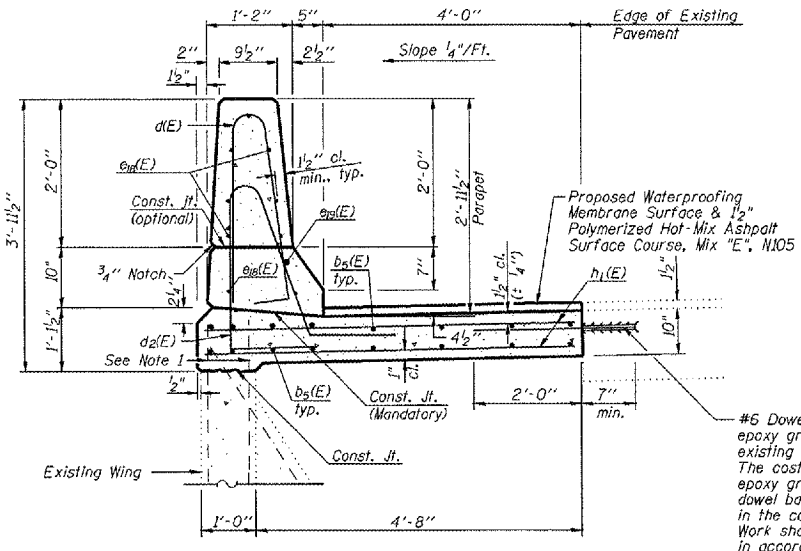
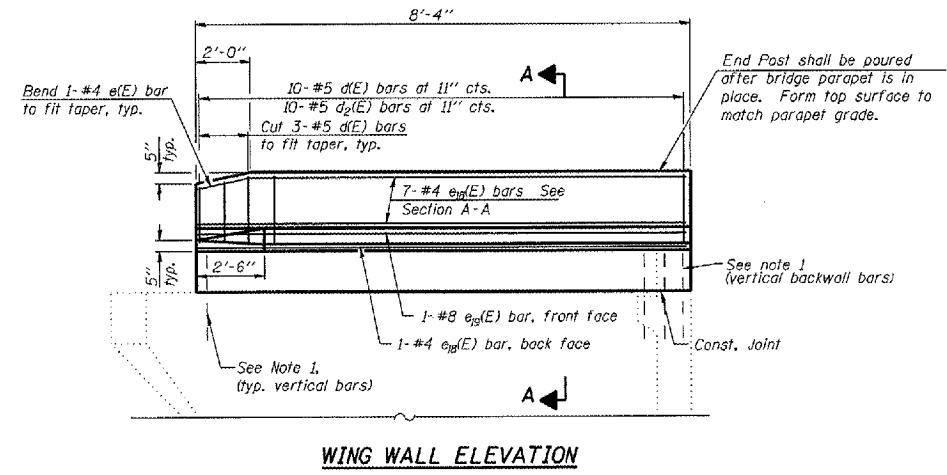


CONTRACT NO. T2659			
F.A.I. RTE.	SECTION	COUNTY	TOTAL SHEETS
•	••	SANGAMON	248
FED. ROAD DIST. NO. ILLINOIS FED. AID PROJECT			224
* F.A.I. 55, F.A.I. 72, F.A.P. 666			
** D6 Interstate R5, BR. W CAB 2008			

Sheet No. 5 of 7 Sheets



- Notes:
- Existing reinforcement extending into new construction shall be cleaned, straightened, and incorporated into the new construction. Cost included in Concrete Removal.
 - Hatched areas indicate location of Concrete Removal.
 - A 3/4" deep saw cut shall be made each side of wingwall at the removal line. Cost of saw cut included in Concrete Removal.
 - Quantity of concrete in end post included with Concrete Superstructure on sheet 4 of 7.
 - Quantity of Concrete Removal of end post included with Concrete Removal on Sheet 4 of 7.
 - Quantity of reinforcement bars in end posts included with reinforcement bars, epoxy coated on Sheet 4 of 7.

SUPERSTRUCTURE DETAILS
 F.A.I. 55, F.A.I. 72, F.A.P. 666
 Section D6 Interstate R5, BR. W CAB 2008
 Sangamon County
 EB I-72 Over BU-55
 S.N. 084-0077