

F.A.I. RTE.	SECTION	COUNTY	TOTAL SHEETS	SHEET NO.
*	**	SANGAMON	248	227
STA.		TO STA.		
FED. ROAD DIST. NO.	ILLINOIS	FED. AID PROJECT		
* F.A.I. 55, F.A.I. 72, F.A.P. 666 ** D6 Interstate R5, BR, M CAB 2008				

TEMPORARY RAISED REFLECTIVE MARKER

STATION TO	STATION	EACH
672+70.00	675+20.00	6

PAVEMENT MARKING REMOVAL

STATION TO	STATION	FOOT
668+60.00	673+13.13	110
668+60.00	673+13.13	453
668+60.00	673+13.13	453
675+05.80	684+10.00	230
675+05.80	684+10.00	904
675+05.80	676+03.22	97
676+11.00	677+23.91	113
676+11.00	684+10.00	799
TOTAL		3159

*** HOT-MIX ASPHALT BASE COURSE WIDENING, 12"

STATION TO	STATION	SO YD
671+28.08	673+13.13	142
675+05.80	676+03.22	81
676+11.00	683+54.26	855
TOTAL		1078

PAVED SHOULDER REMOVAL

STATION TO	STATION	SO YD
671+28.08	673+13.13	142
675+05.80	676+03.22	81
676+11.00	683+54.26	720
TOTAL		943

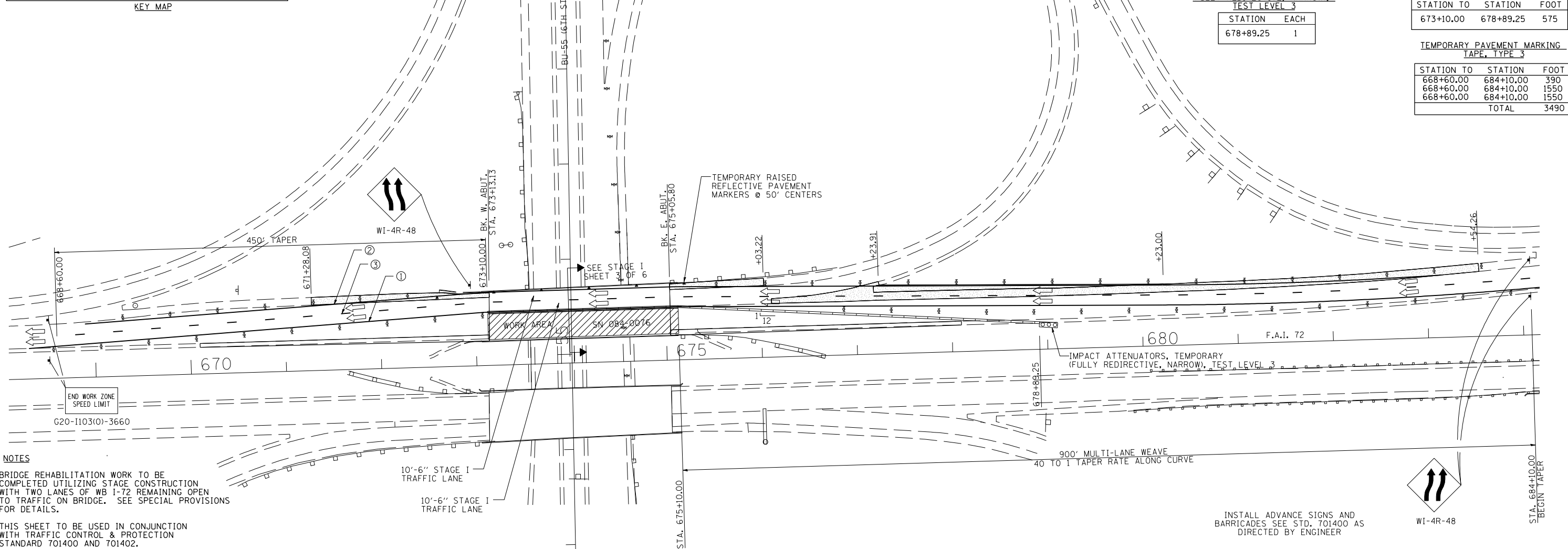
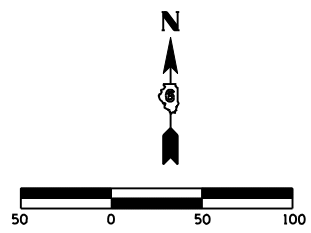
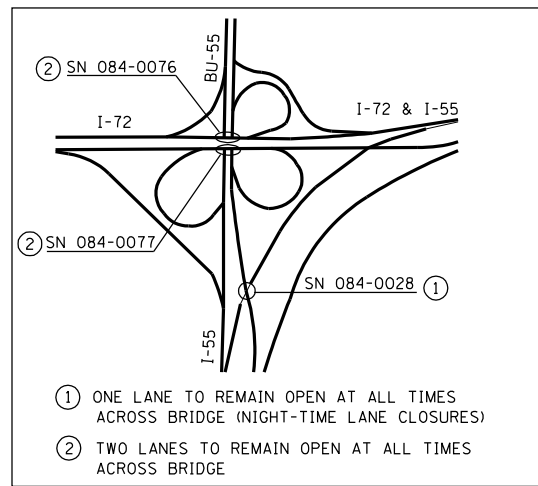
*** SHOULDERS TO BE REPLACED BY BASE COURSE WIDENING SHALL MATCH EXISTING WIDTHS AND SLOPES OR AS DIRECTED BY THE ENGINEER

IMPACT ATTENUATORS, TEMPORARY (FULLY REDIRECTIVE, NARROW), TEST LEVEL 3

STATION	EACH
678+89.25	1

TEMPORARY PAVEMENT MARKING TAPE, TYPE 3

STATION TO	STATION	FOOT
668+60.00	684+10.00	390
668+60.00	684+10.00	1550
668+60.00	684+10.00	1550
TOTAL		3490



- NOTES**
- BRIDGE REHABILITATION WORK TO BE COMPLETED UTILIZING STAGE CONSTRUCTION WITH TWO LANES OF WB I-72 REMAINING OPEN TO TRAFFIC ON BRIDGE. SEE SPECIAL PROVISIONS FOR DETAILS.
 - THIS SHEET TO BE USED IN CONJUNCTION WITH TRAFFIC CONTROL & PROTECTION STANDARD 701400 AND 701402.
 - STAGING SEQUENCE:
 - PRE STAGE I: PLACE BASE COURSE WIDENING AS REQUIRED FOR STAGE I TRAFFIC, UTILIZING TRAFFIC CONTROL & PROTECTION STD. 701101.
 - STAGE I: PLACE TRAFFIC CONTROL IN ACCORDANCE WITH THE PLANS AND TRAFFIC CONTROL & PROTECTION STD. 701400 AND 701402. COMPLETE ALL BRIDGE WORK ON THE SOUTH HALF OF SN 084-0076.
 - PLACE BASE COURSE WIDENING AS REQUIRED FOR STAGE II TRAFFIC SHOWN ON SHEET 2.
 - THE USE OF METAL SIGNS ON TYPE III BARRICADES SHALL NOT BE ALLOWED, AS IT IS NOT COMPLIANT WITH NCHRP 350.

LEGEND

- WORK AREA
- DIRECTION OF TRAFFIC
- BASE COURSE WIDENING
- TEMPORARY PAVEMENT MARKING TAPE, TYPE 3
- TEMPORARY CONCRETE BARRIER WITH BARRIER WALL REFLECTORS AND VERTICAL PANELS PER STD. 701402
- TYPE I BARRICADE DRUM W/ STEADY BURN MONO DIRECTIONAL LIGHT @ 50' CENTERS U.N.O.
- ① TEMP. PAVT. MARKING TAPE, TYPE 3, YELLOW
- ② TEMP. PAVT. MARKING TAPE, TYPE 3, WHITE
- ③ TEMP. PAVT. MARKING TAPE, TYPE 3, WHITE (10' DASH, 30' SKIP)

STANDARD 701402 (SPECIAL)

REVISIONS	
NAME	DATE
CLOSED RAMPS	11/15/07

S.N. 084-0076
SHEET 1 OF 3

ILLINOIS DEPARTMENT OF TRANSPORTATION

TRAFFIC CONTROL PLAN 1 OF 6
STAGE I TRAFFIC

F.A.I. 55, F.A.I. 72, F.A.P. 666
SANGAMON COUNTY

SCALE: VERT. _____
HORIZ. _____
DATE 10/06

DRAWN BY PBB
CHECKED BY RJC