

F.A.I. RTE.	SECTION	COUNTY	TOTAL SHEETS	SHEET NO.
72	(84-9)RS-6	SANGAMON	248	228

STA.	TO STA.
FED. ROAD DIST. NO.	ILLINOIS FED. AID PROJECT

F.A.I. 55, F.A.I. 72, F.A.P. 666
 D6 Interstate R5, BR, M CAB 2008
 *** HOT-MIX ASPHALT BASE COURSE WIDENING, 12" ***

TEMPORARY RAISED REFLECTIVE MARKER

STATION TO	STATION	EACH
672+10.00	677+60.00	12

STATION TO	STATION	SQ YD
670+10.00	673+13.13	135
675+05.80	678+10.00	135
TOTAL		270

PAVED SHOULDER REMOVAL

STATION TO	STATION	SQ YD
670+10.00	673+13.13	135
675+05.80	678+10.00	135
TOTAL		270

RELOCATE TEMPORARY CONCRETE BARRIER

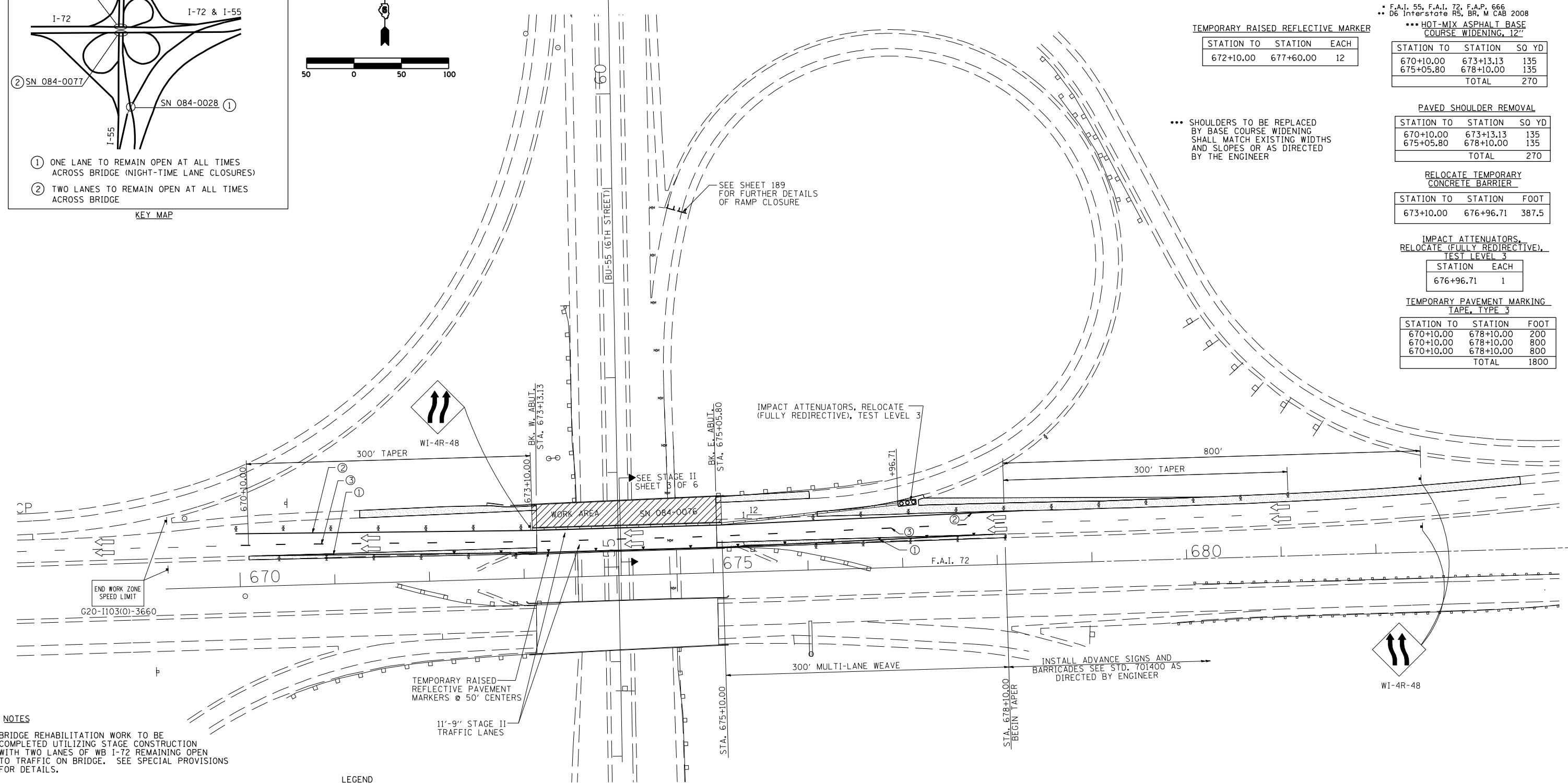
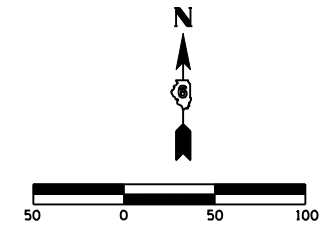
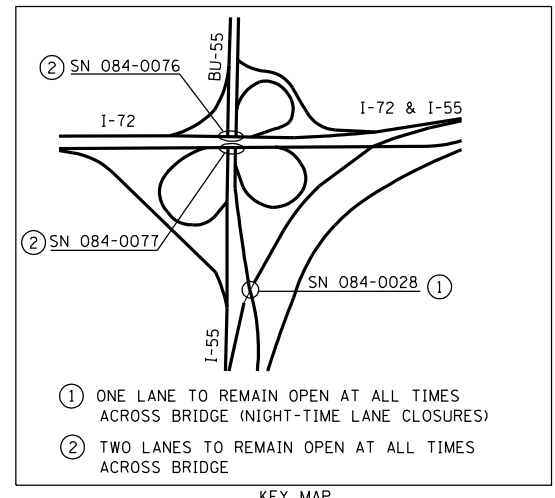
STATION TO	STATION	FOOT
673+10.00	676+96.71	387.5

IMPACT ATTENUATORS, RELOCATE (FULLY REDIRECTIVE), TEST LEVEL 3

STATION	EACH
676+96.71	1

TEMPORARY PAVEMENT MARKING TAPE, TYPE 3

STATION TO	STATION	FOOT
670+10.00	678+10.00	200
670+10.00	678+10.00	800
670+10.00	678+10.00	800
TOTAL		1800



- NOTES**
- BRIDGE REHABILITATION WORK TO BE COMPLETED UTILIZING STAGE CONSTRUCTION WITH TWO LANES OF WB I-72 REMAINING OPEN TO TRAFFIC ON BRIDGE. SEE SPECIAL PROVISIONS FOR DETAILS.
 - THIS SHEET TO BE USED IN CONJUNCTION WITH TRAFFIC CONTROL & PROTECTION STANDARD 701400 AND 701402.
 - STAGING SEQUENCE:
 - STAGE II: PLACE TRAFFIC CONTROL IN ACCORDANCE WITH THE PLANS AND TRAFFIC CONTROL & PROTECTION STD. 701400 AND 701402. COMPLETE ALL BRIDGE WORK ON THE NORTH HALF OF SN 084-0076.
 - UPON COMPLETION, REMOVE ALL TRAFFIC CONTROL ITEMS IN ACCORDANCE WITH THE STANDARD SPECIFICATIONS.
 - THE USE OF METAL SIGNS ON TYPE III BARRICADES SHALL NOT BE ALLOWED, AS IT IS NOT COMPLIANT WITH NCHRP 350.

- LEGEND**
- WORK AREA
 - DIRECTION OF TRAFFIC
 - BASE COURSE WIDENING
 - TEMPORARY PAVEMENT MARKING TAPE, TYPE 3
 - TEMPORARY CONCRETE BARRIER WITH BARRIER WALL REFLECTORS AND VERTICAL PANELS PER STD. 701402
 - TYPE I BARRICADE DRUM W/ STEADY BURN MONO DIRECTIONAL LIGHT @ 50' CENTERS U.N.O.

- ① TEMP. PAVT. MARKING TAPE, TYPE 3, YELLOW
- ② TEMP. PAVT. MARKING TAPE, TYPE 3, WHITE
- ③ TEMP. PAVT. MARKING TAPE, TYPE 3, WHITE (10' DASH, 30' SKIP)

STANDARD 701402 (SPECIAL)

REVISIONS	
NAME	DATE
CLOSED RAMPS	11/15/07

S.N. 084-0076
 SHEET 2 OF 3

ILLINOIS DEPARTMENT OF TRANSPORTATION

TRAFFIC CONTROL PLAN 2 OF 6
 STAGE II TRAFFIC
 F.A.I. 55, F.A.I. 72, F.A.P. 666
 SANGAMON COUNTY

SCALE: VERT. HORIZ.
 DATE: 7/04

DRAWN BY: MLO
 CHECKED BY: RJC