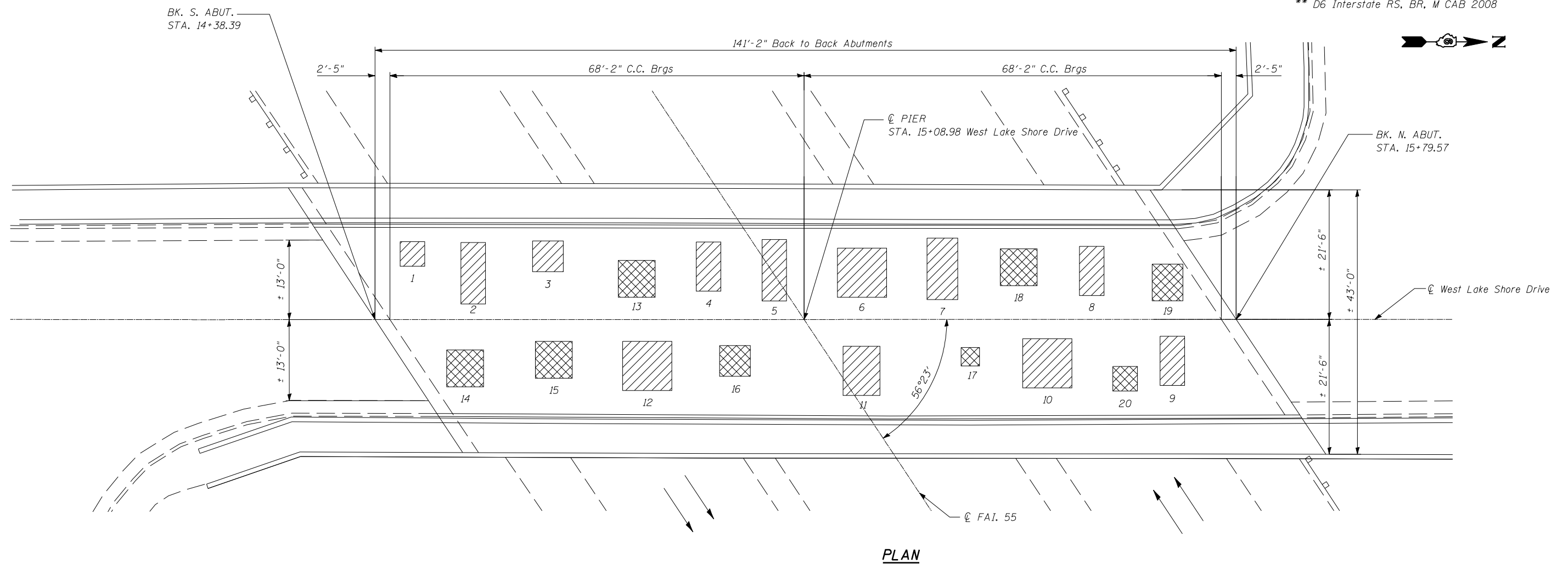


STATE OF ILLINOIS  
DEPARTMENT OF TRANSPORTATION

ROUTE NO.	SECTION	COUNTY	TOTAL SHEETS	SHEET NO.	SHEET NO. 4
#	**	Sangamon	248	236	9 SHEETS
FED. ROAD DIST. NO. 7		ILLINOIS		FED. AID PROJECT	

Contract # 72659  
\* FAI 55 (I-55), FAI 72 (I-72) FAP 666 (I-55 BUS)  
\*\* D6 Interstate RS, BR, M CAB 2008



PLAN

**ANTICIPATED DECK SLAB REPAIR (PARTIAL DEPTH)**

Patch	Length (FT.)	Width (FT.)	Area (SQ. YD.)
1	4	4	1.8
2	4	10	4.4
3	5	5	2.8
4	4	8	3.5
5	4	10	4.4
6	8	8	7.1
7	5	10	5.5
8	4	8	3.5
9	4	8	3.5
10	8	8	7.1
11	6	8	5.3
12	8	8	7.1
TOTAL			56

**ANTICIPATED DECK SLAB REPAIR (FULL DEPTH)**

Patch	Length (FT.)	Width (FT.)	Area (SQ. YD.)
13	6	6	4
14	6	6	4
15	6	6	4
16	5	5	2.7
17	3	3	1
18	6	6	4
19	5	6	3.3
20	4	4	1.7
TOTAL			25

**LEGEND**



Notes: Date of deck patching survey = March 14, 2007  
The Engineer shall record the actual areas of repair and location on this sheet in order to document as-built conditions for future reference.

DESIGNED	- KRG
CHECKED	- MJK
DRAWN	- GSJ
CHECKED	- MJK

MID-AMERICA ENGINEERING SERVICES

**DECK PATCHING SURVEY**  
**WEST LAKE SHORE DRIVE OVER FAI 55 (I-55)**  
**SECTION: D6 INTERSTATE RS, BR, M CAB 2008**  
**SANGAMON COUNTY**  
**Sta. 15+08.98**  
**SN 084-0092**