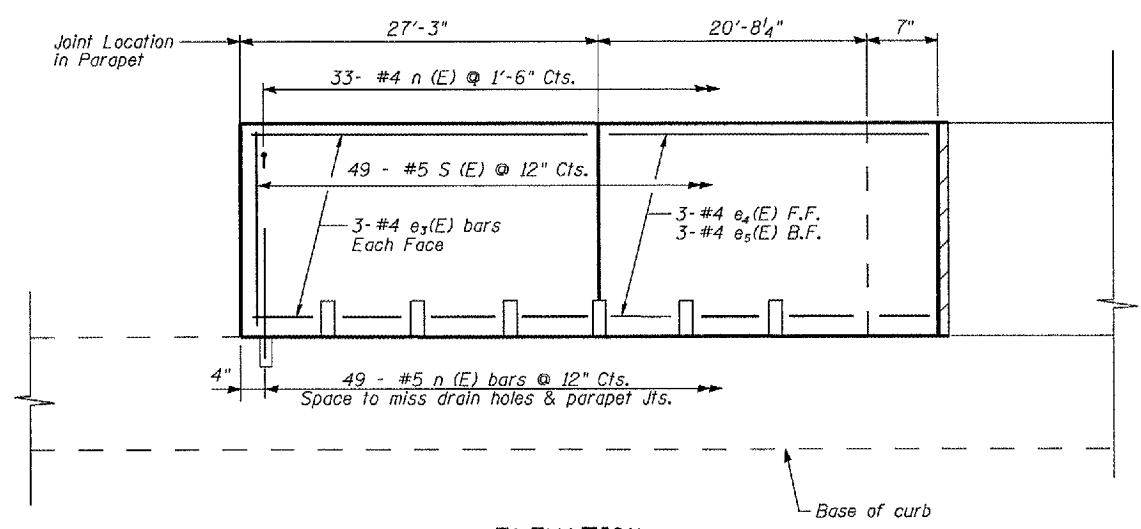


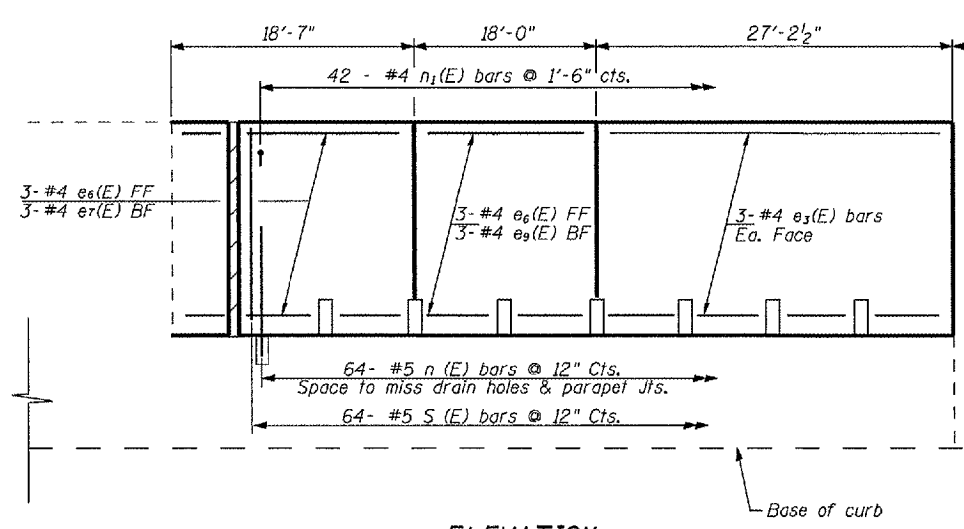
STATE OF ILLINOIS  
DEPARTMENT OF TRANSPORTATION

ROUTE NO.	SECTION	COUNTY	TOTAL SHEETS	SHEET	SHEET NO.
*	**	Sangamon	248	240	9
FED. ROAD DIST. NO. 7		ILLINOIS	FED. AID PROJECT		

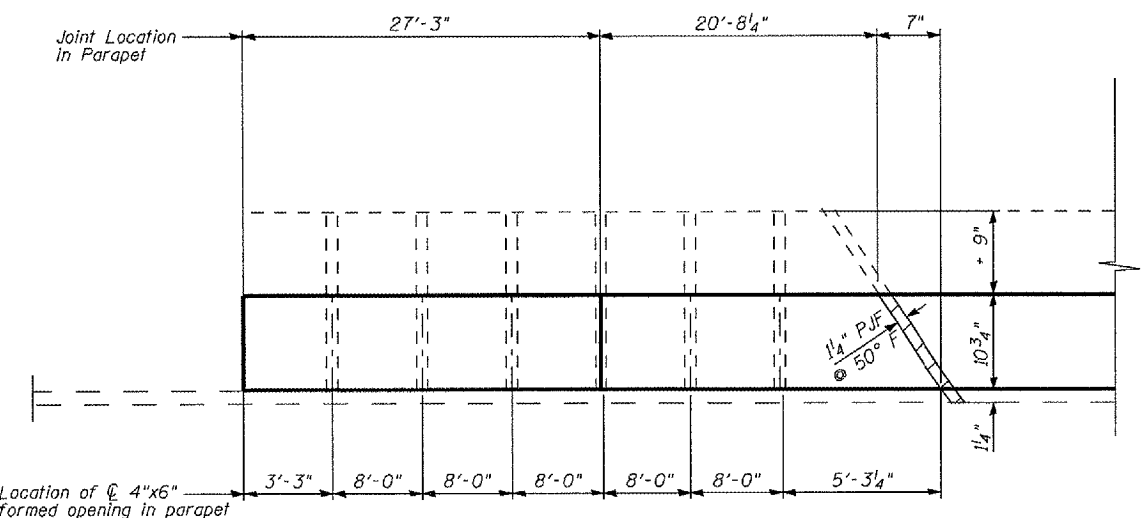
Contract # 72659  
\* FAI 55 (I-55), FAI 72 (I-72) FAP 666 (I-55 BUS)  
\*\* D6 Interstate RS, BR, M CAB 2008



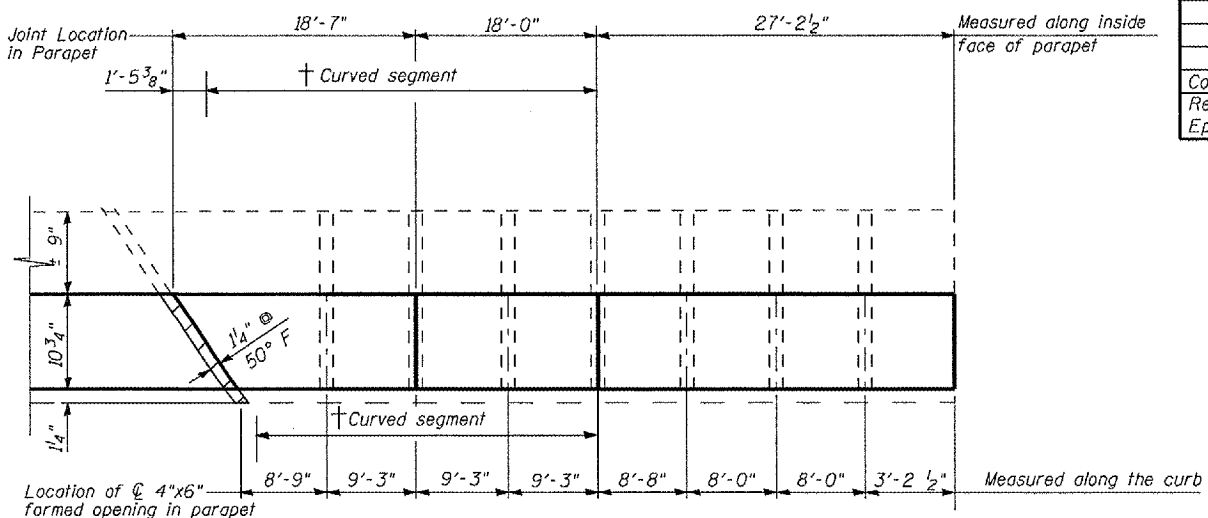
**ELEVATION  
LOOKING WEST  
(S.W. PARAPET)**



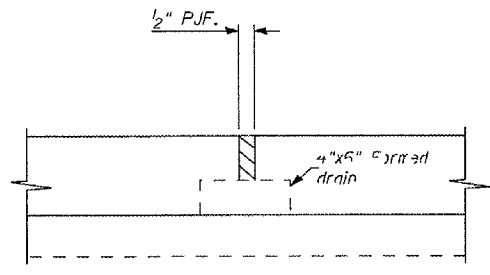
**ELEVATION  
LOOKING WEST  
(N.W. PARAPET)**



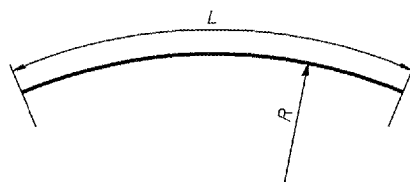
**PLAN  
S.W. PARAPET**



**PLAN  
N.W. PARAPET**



**PARAPET JOINT DETAIL**



**BARS e6(E) to e9(E)**

**BAR DIMENSIONS**

Bar	L	R
e6(E)	17'-8"	21'-9"
e7(E)	18'-3"	21'-2"
e9(E)	18'-2"	21'-2"

**BILL OF MATERIAL**

Bar	No.	Size	Length	Shape
e3(E)	12	#4	26'-11"	—
e4(E)	3	#4	20'-11"	—
e5(E)	6	#4	20'-4"	—
e6(E)	6	#4	17'-8"	—
e7(E)	3	#4	17'-11"	—
e9(E)	3	#4	18'-2"	—
e10(E)	6	#4	30'-0"	—
e11(E)	3	#4	20'-10"	—
e12(E)	3	#4	19'-0"	—
e13(E)	9	#4	19'-6"	—
e14(E)	3	#4	19'-4"	—
e15(E)	3	#4	19'-6"	—
n(E)	204	#5	2'-1"	—
n1(E)	136	#4	1'-8"	—
s(E)	204	#4	4'-3"	—
Concrete Superstructures			Cu. Yd.	10.0
Reinforcement Bars, Epoxy Coated			Pound	2060

† Curved portion of sidewalk and parapet is shown as straight for detailing convenience. For actual representation see sheet 7 of 9.

Note: Parapet lengths are measured along the inside face. See sidewalk cross section except as shown. Alignment of new formed drains to coincide with existing.

Cut e3(E) to e6(E) and e9(E) in field to miss formed drain opening as necessary.  
All concrete will be measured and paid for as "concrete Superstructures"  
BF = Back face  
FF = Front face

**APPROACH ROADWAY PARAPET DETAILS I  
WEST LAKE SHORE DRIVE OVER FAI 55 (I-55)  
SECTION: D6 INTERSTATE RS, BR, M CAB 2008  
SANGAMON COUNTY  
Sta. 15+08.98  
SN 084-0092**

DESIGNED - KRG
CHECKED - MJK
DRAWN - GSJ
CHECKED - MJK

MID-AMERICA ENGINEERING SERVICES