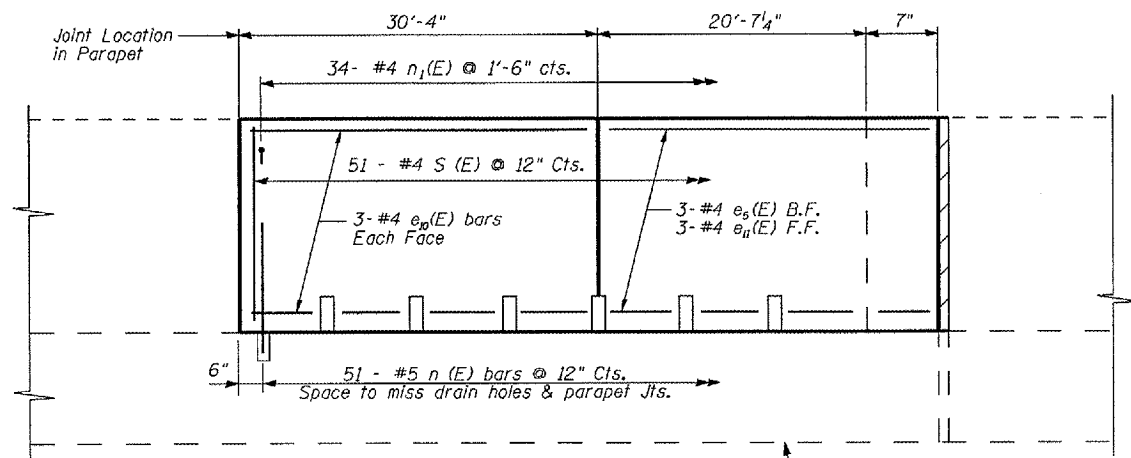


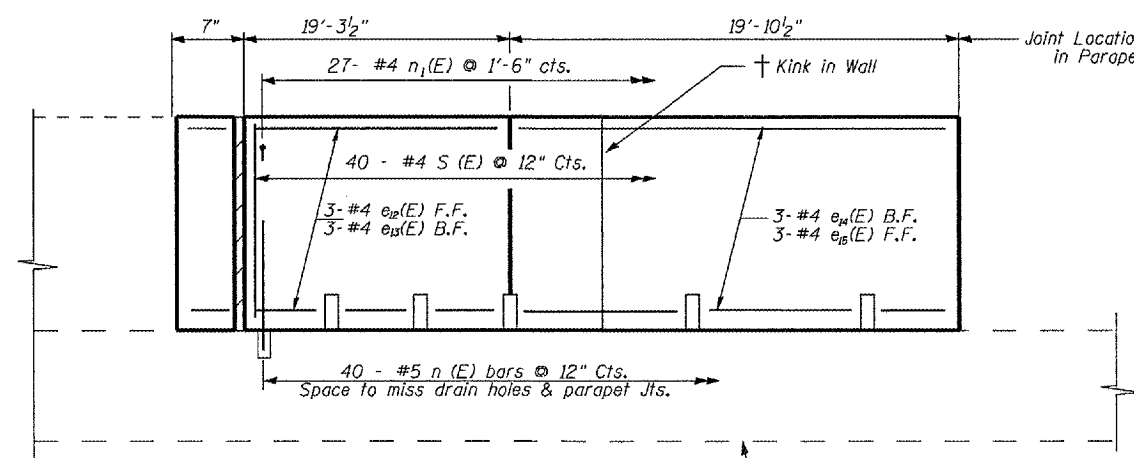
STATE OF ILLINOIS  
DEPARTMENT OF TRANSPORTATION

ROUTE NO.	SECTION	COUNTY	SHEETS	SHEET	SHEET NO.
	**	Sangamon	240	241	9 SHEETS
FED. ROAD DIST. NO. 7	ILLINOIS	FED. AID PROJECT			

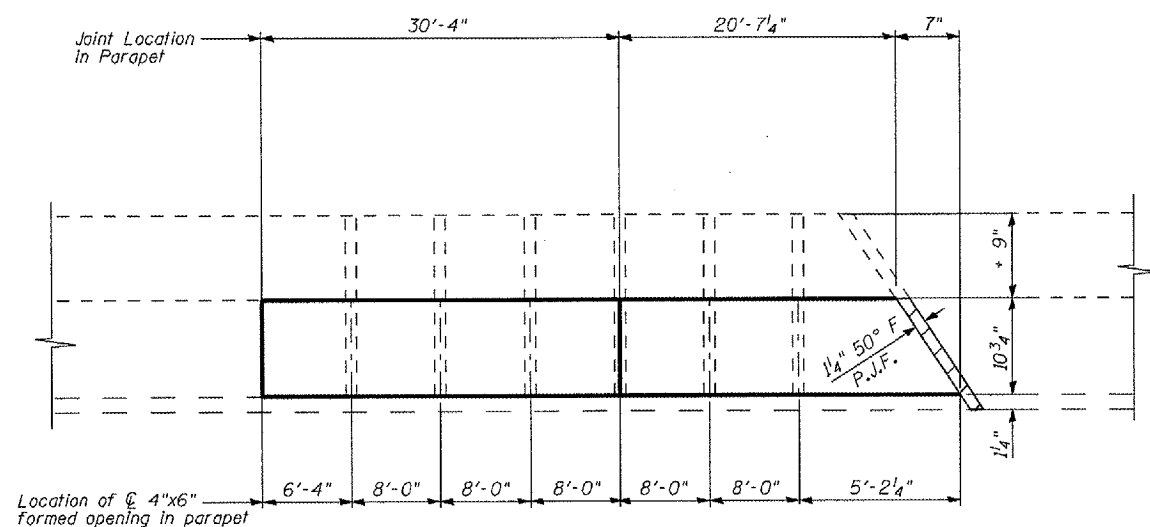
Contract # 72659  
\* FAI 55 (I-55), FAI 72 (I-72) FAP 666 (I-55 BUS)  
\*\* D6 Interstate RS, BR, M CAB 2008



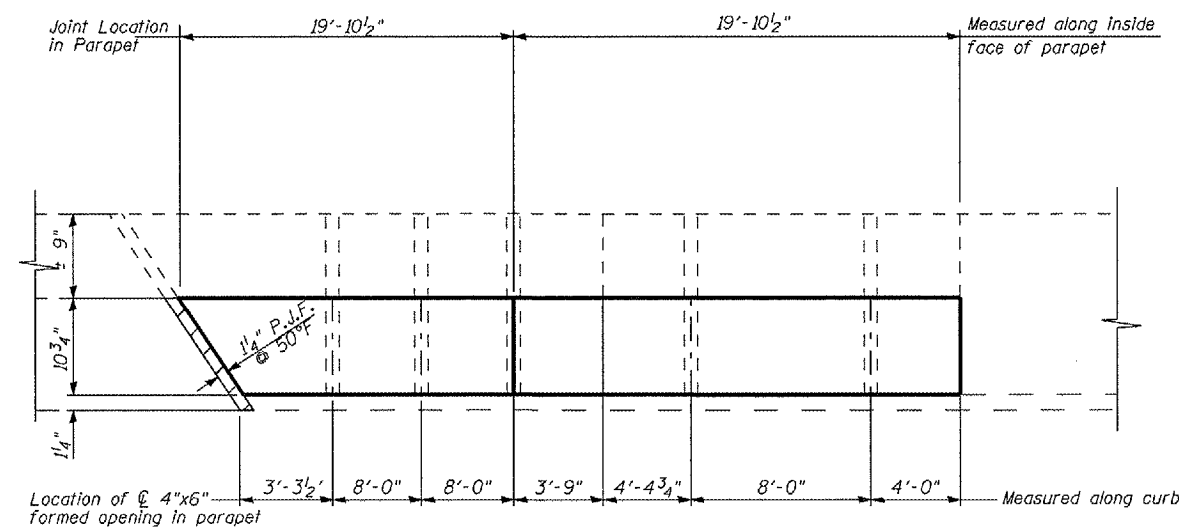
**ELEVATION  
LOOKING EAST  
(N.E. PARAPET)**



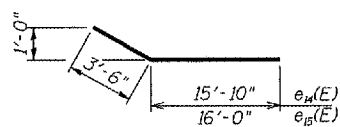
**ELEVATION  
LOOKING EAST  
(S.E. PARAPET)**



**PLAN  
N.E. PARAPET**



**PLAN  
S.E. PARAPET**



**BARS e14(E) & e15(E)**

† Kinked portion of sidewalk and parapet is shown as straight for detailing convenience. For actual representation see sheet 7 of 9.

Note: All parapet lengths are measured along the inside face of parapet except as shown

Cut bars e10(E) and e15(E) to e10(E) in field to miss formed drain opening as necessary.

All concrete will be measured and paid for as "concrete Superstructures"

B.F. = Back Face  
F.F. = Front Face

DESIGNED	- KRG
CHECKED	- MJK
DRAWN	- GSJ
CHECKED	- MJK

MID-AMERICA ENGINEERING SERVICES

**APPROACH ROADWAY PARAPET DETAILS II**  
**WEST LAKE SHORE DRIVE OVER FAI 55 (I-55)**  
**SECTION: D6 INTERSTATE RS, BR, M CAB 2008**  
**SANGAMON COUNTY**  
**Sta. 15+08.98**  
**SN 084-0092**