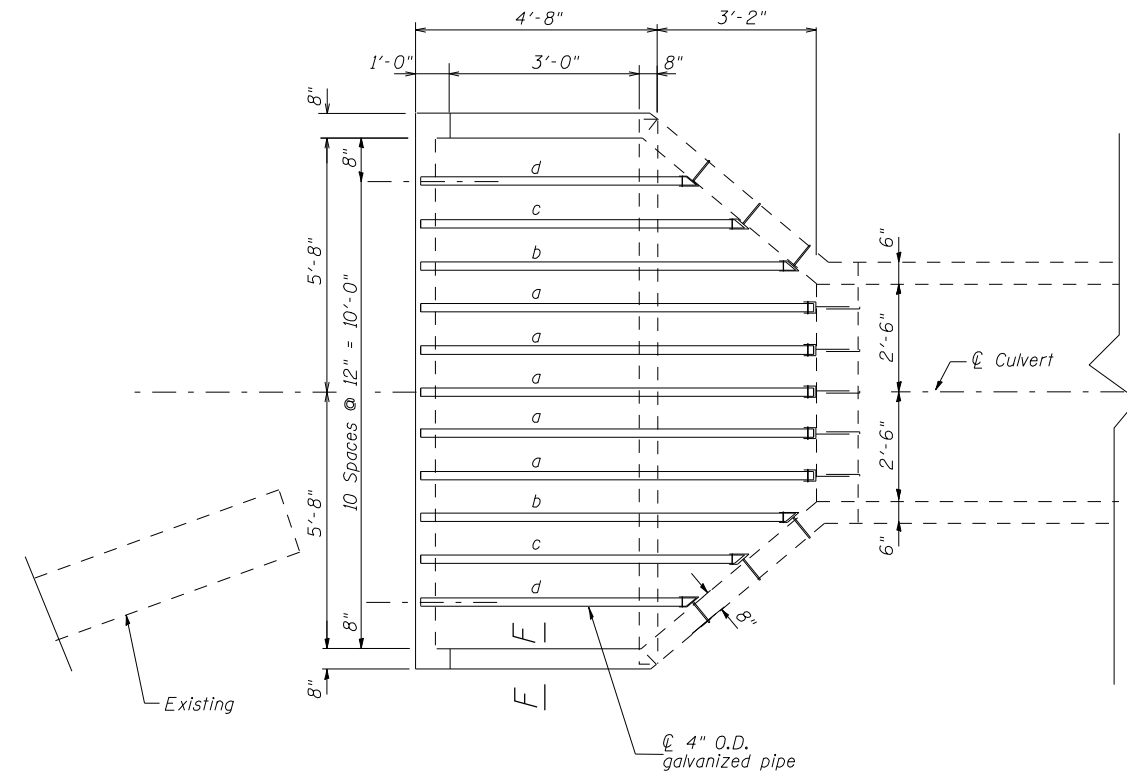


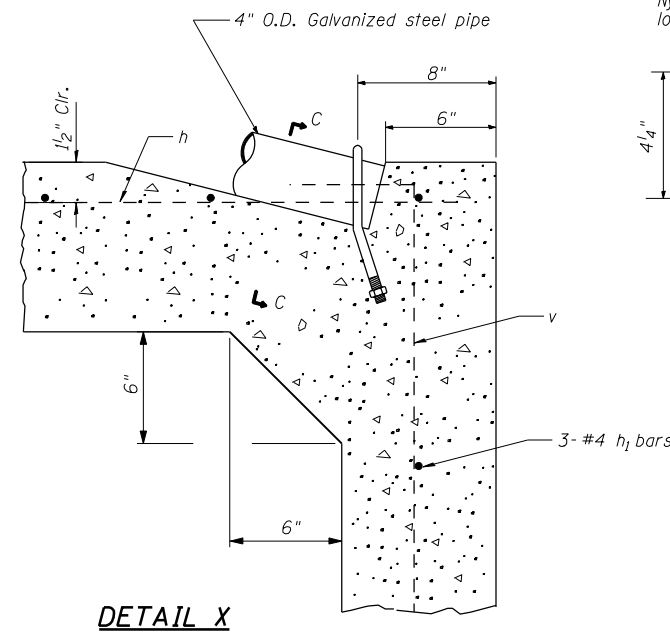
STATE OF ILLINOIS
DEPARTMENT OF TRANSPORTATION

ROUTE NO.	SECTION	COUNTY	TOTAL SHEETS	SHEET NO.	SHEET NO. 2 5 SHEETS
*	**	Sangamon	248	245	
FED. ROAD DIST. NO. 7		ILLINOIS	FED. AID PROJECT		

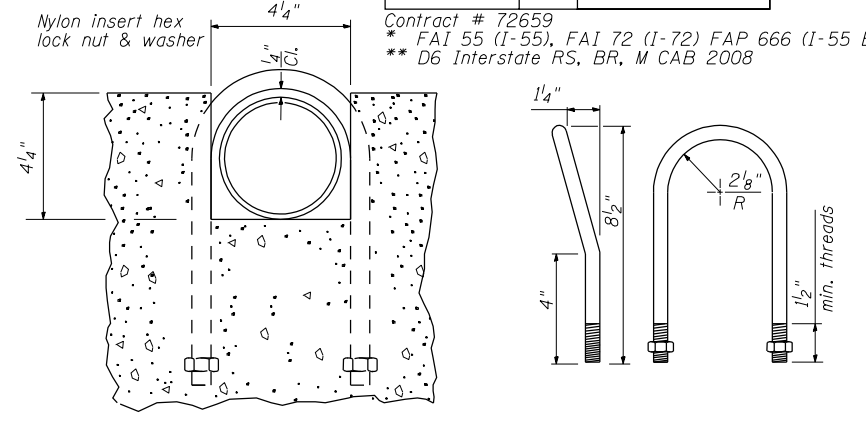
Contract # 72659
* FAI 55 (I-55), FAI 72 (I-72) FAP 666 (I-55 BUS)
** D6 Interstate RS, BR, M CAB 2008



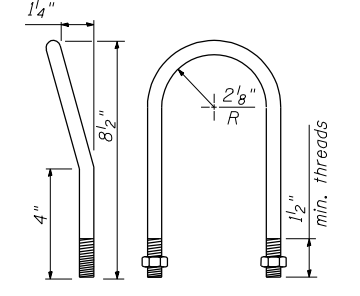
INLET PLAN



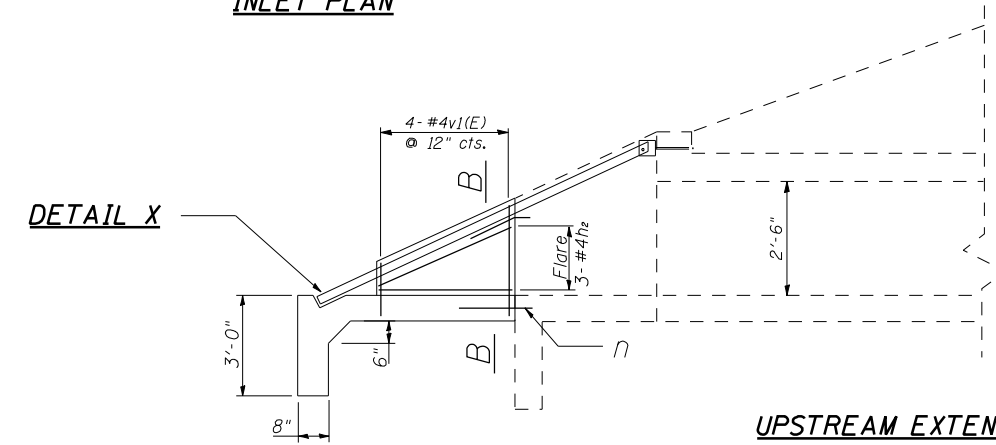
DETAIL X



SECTION C-C

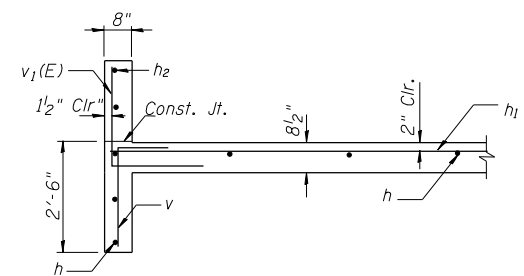


1/2" - φ U BOLT
(11 - required)

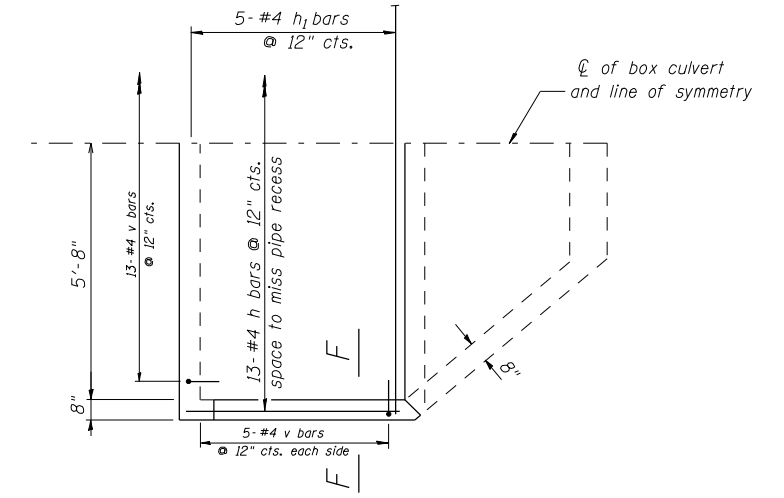


DETAIL X

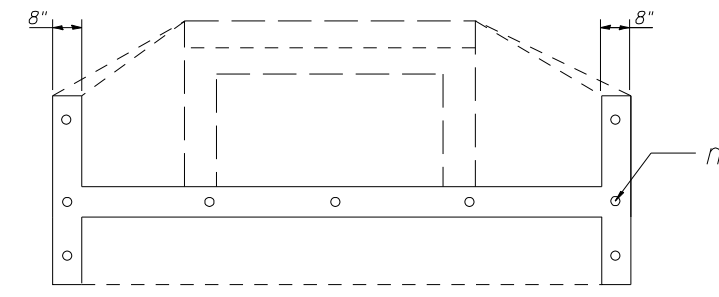
UPSTREAM EXTENSION



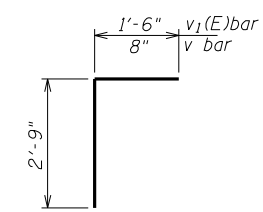
SECTION F-F



UPSTREAM APRON PLAN



SECTION B-B



BAR v & v1

BILL OF MATERIAL

Bar	No.	Size	Length	Shape
h	17	#4	3'-8"	—
h1	5	#4	12'-4"	—
h2	6	#4	2'-8"	—
n	9	#5	2'-1"	—
v	23	#4	4'-3"	┘
v1(E)	8	#4	3'-5"	┘
Concrete Box Culverts	Cu. Yd.		2.4	
Reinforcement Bars	Pound		200	
Grating (Special)	Each		1	

Notes:
Epoxy coating of v (E) bars is included in "Reinforcement" Bars.
For grating connection details see Sheet 3 of 5 sheets

DESIGNED	KRG
CHECKED	MJK
DRAWN	GSJ
CHECKED	MJK

MID-AMERICA ENGINEERING SERVICES

UPSTREAM EXTENSION
FAP 666 (I-55 BUS)
SECTION: D6 INTERSTATE RS, BR, M CAB 2008
SANGAMON COUNTY