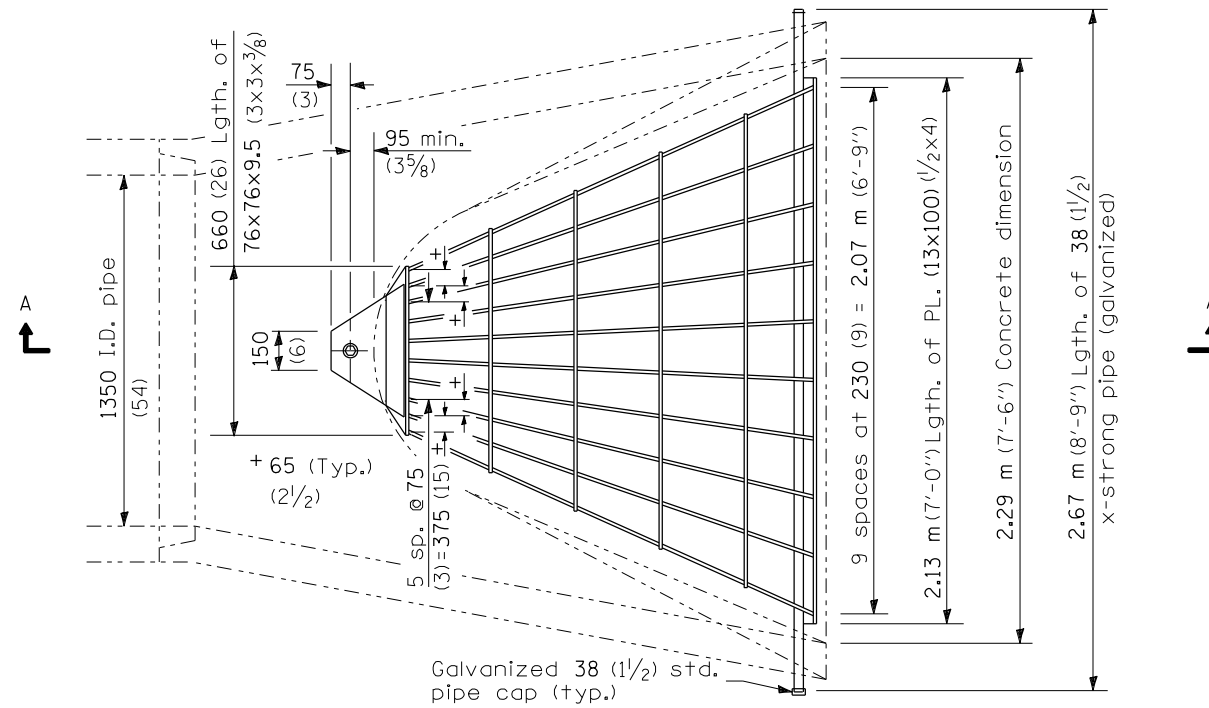


ROUTE NO.	SECTION	COUNTY	TOTAL SHEETS	SHEET NO.
*	**	Sangamon	248	248
FED. ROAD DIST. NO. 7		ILLINOIS	FED. AID PROJECT-	

SHEET NO. 5

5 SHEETS

Contract # 72659
 * FAI 55 (I-55), FAI 72 (I-72) FAP 666 (I-55 BUS)
 ** D6 Interstate RS, BR, M CAB 2008



PLAN

Quantity of steel = 193 kg (425 lbs.)

GENERAL NOTES

Grating details shown are intended for use with particular sizes of precast reinforced concrete flared end sections as shown on standards 542306.

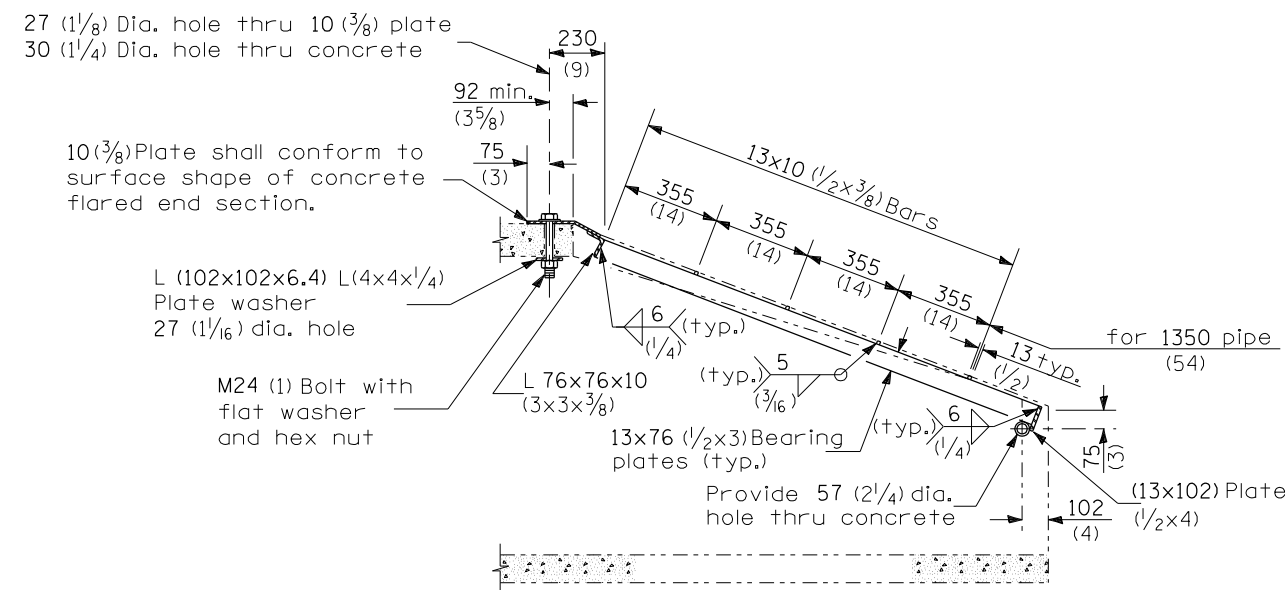
Approximate quantity of steel shown includes total quantity of grating, bolts, nuts, washers and steel pipe.

Holes in the precast concrete flared end sections shall be cored to the diameters noted. If cone-out on the other end of the hole occurs, the hole shall be filled with grout to correct the diameter of the hole.

All dimensions shown are in SI Units (US Units)

BILL OF MATERIAL

Item	Unit	Total
Grating for Reinforced Concrete Flared End Section, E.O. Dia. 54"	Each	1



SECTION A-A

DESIGNED	KRG
CHECKED	MJK
DRAWN	GSJ
CHECKED	MJK

MID-AMERICA ENGINEERING SERVICES

**GRATING FOR HORIZONTAL ELLIPTICAL
 CONCRETE FLARED END SECTION
 FOR EQUIVALENT DIAMETER 54" PIPE
 STANDARD 542311
 FAP 666 (I-55 BUS)
 SECTION: D6 INTERSTATE RS, BR, M CAB 2008
 SANGAMON COUNTY**