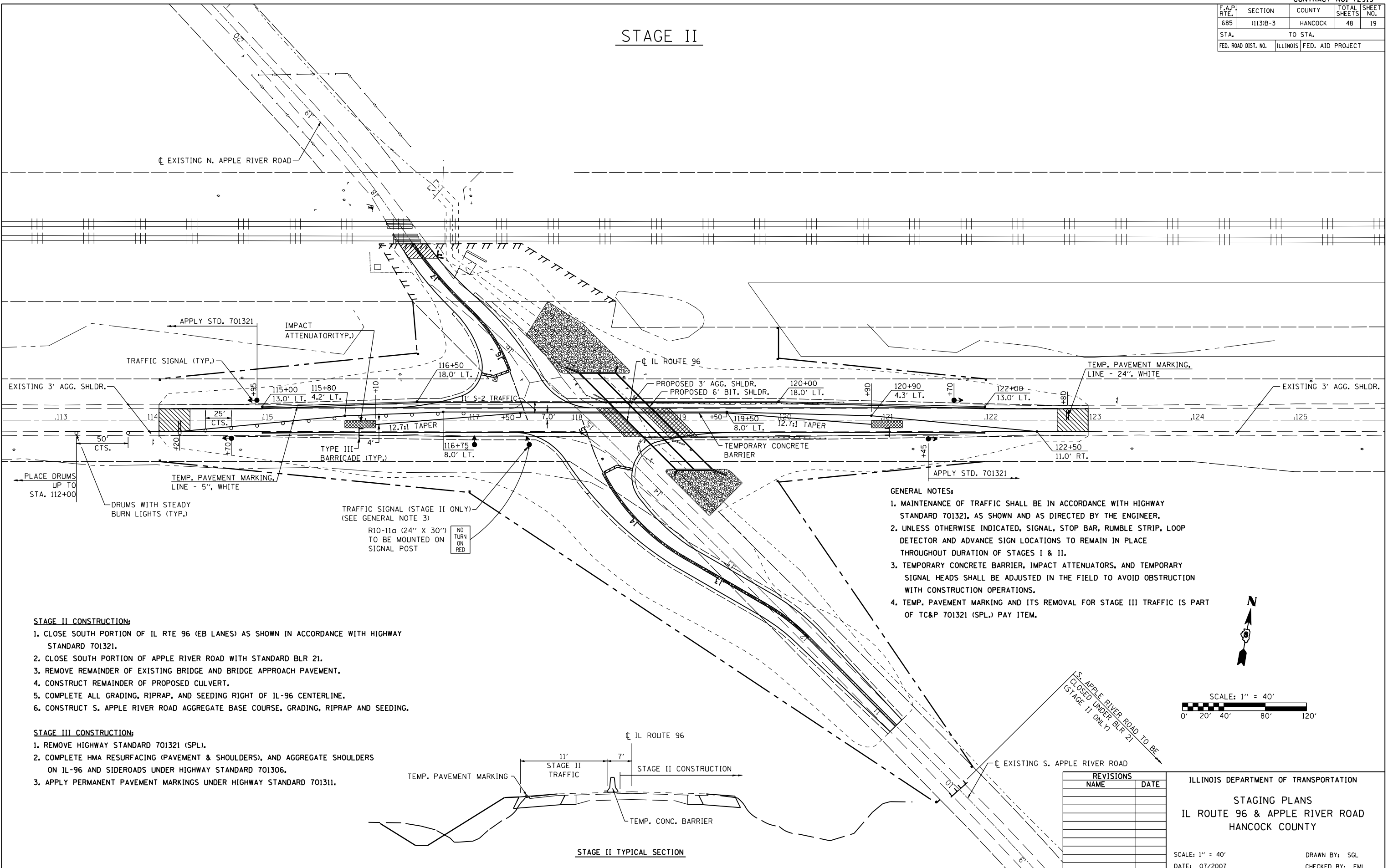


F.A.P. RTE.	SECTION	COUNTY	TOTAL SHEETS	SHEET NO.
685	(113)B-3	HANCOCK	48	19
STA.		TO STA.		
FED. ROAD DIST. NO.	ILLINOIS	FED. AID PROJECT		

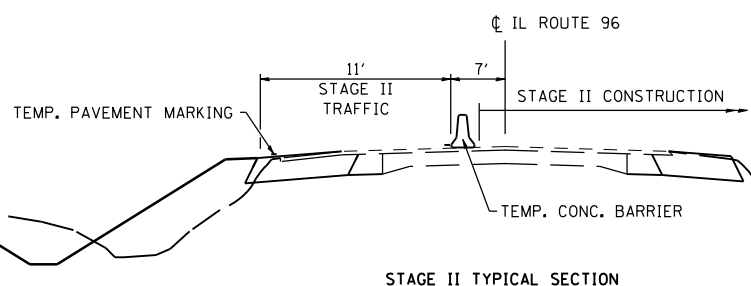
STAGE II



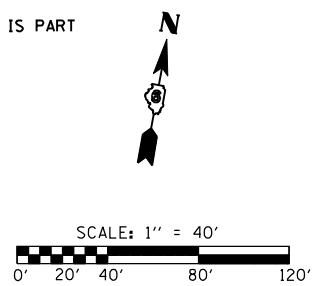
- GENERAL NOTES:**
1. MAINTENANCE OF TRAFFIC SHALL BE IN ACCORDANCE WITH HIGHWAY STANDARD 701321, AS SHOWN AND AS DIRECTED BY THE ENGINEER.
 2. UNLESS OTHERWISE INDICATED, SIGNAL, STOP BAR, RUMBLE STRIP, LOOP DETECTOR AND ADVANCE SIGN LOCATIONS TO REMAIN IN PLACE THROUGHOUT DURATION OF STAGES I & II.
 3. TEMPORARY CONCRETE BARRIER, IMPACT ATTENUATORS, AND TEMPORARY SIGNAL HEADS SHALL BE ADJUSTED IN THE FIELD TO AVOID OBSTRUCTION WITH CONSTRUCTION OPERATIONS.
 4. TEMP. PAVEMENT MARKING AND ITS REMOVAL FOR STAGE III TRAFFIC IS PART OF TC&P 701321 (SPL.) PAY ITEM.

- STAGE II CONSTRUCTION:**
1. CLOSE SOUTH PORTION OF IL RTE 96 (EB LANES) AS SHOWN IN ACCORDANCE WITH HIGHWAY STANDARD 701321.
 2. CLOSE SOUTH PORTION OF APPLE RIVER ROAD WITH STANDARD BLR 21.
 3. REMOVE REMAINDER OF EXISTING BRIDGE AND BRIDGE APPROACH PAVEMENT.
 4. CONSTRUCT REMAINDER OF PROPOSED CULVERT.
 5. COMPLETE ALL GRADING, RIPRAP, AND SEEDING RIGHT OF IL-96 CENTERLINE.
 6. CONSTRUCT S. APPLE RIVER ROAD AGGREGATE BASE COURSE, GRADING, RIPRAP AND SEEDING.

- STAGE III CONSTRUCTION:**
1. REMOVE HIGHWAY STANDARD 701321 (SPL).
 2. COMPLETE HMA RESURFACING (PAVEMENT & SHOULDERS), AND AGGREGATE SHOULDERS ON IL-96 AND SIDEROADS UNDER HIGHWAY STANDARD 701306.
 3. APPLY PERMANENT PAVEMENT MARKINGS UNDER HIGHWAY STANDARD 701311.



STAGE II TYPICAL SECTION



REVISIONS	
NAME	DATE

ILLINOIS DEPARTMENT OF TRANSPORTATION
 STAGING PLANS
 IL ROUTE 96 & APPLE RIVER ROAD
 HANCOCK COUNTY

SCALE: 1" = 40'
 DATE: 07/2007

DRAWN BY: SGL
 CHECKED BY: FML

PLOT DATE = Aug-23-2007 11:01:53AM
 FILE NAME = c:\projects\685440A\lin\Final\staging.dgn
 PLOT SCALE = 84.7885 / IN.
 USER NAME = laughlin-1