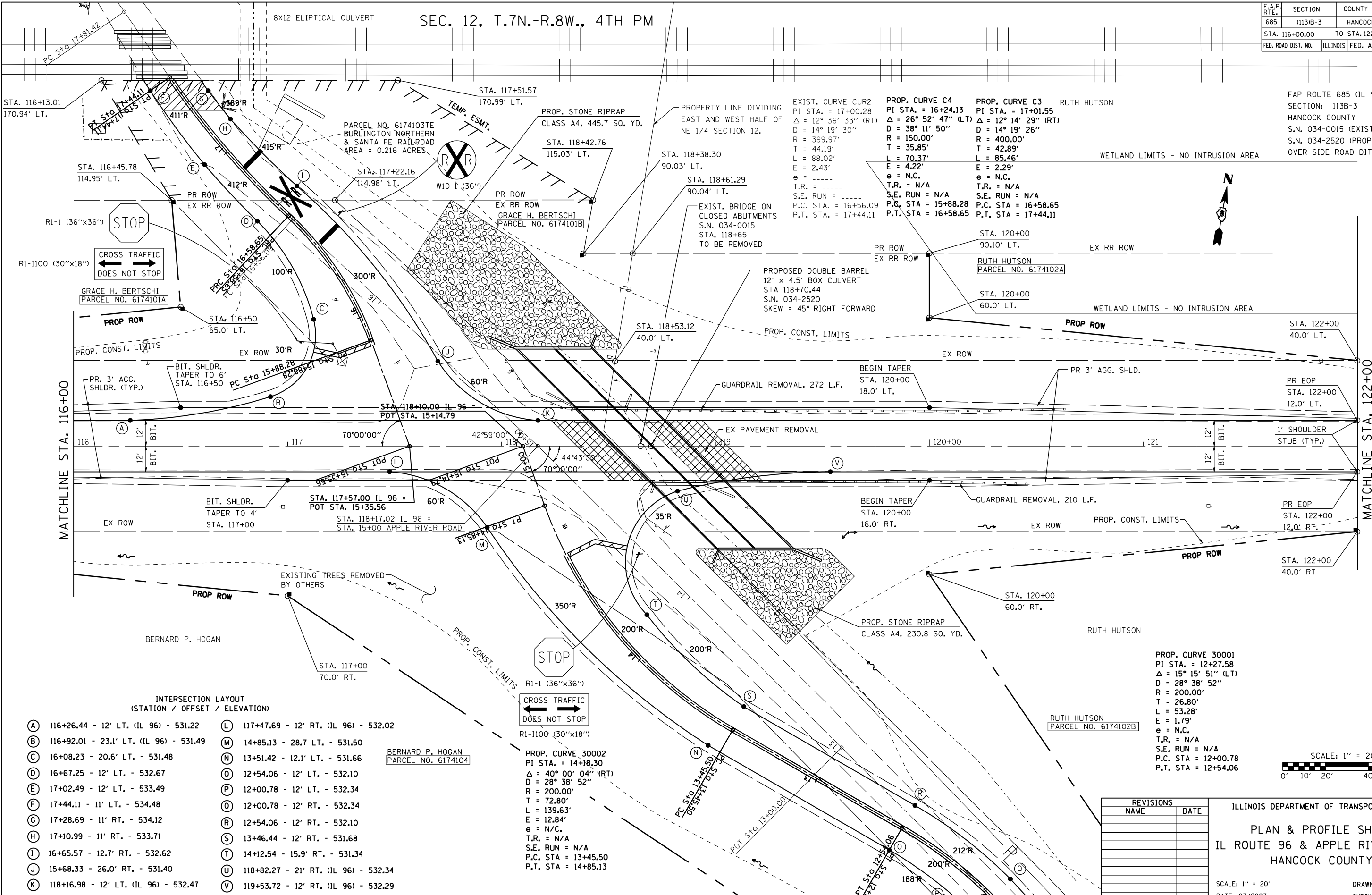


F.A.P. RTE.	SECTION	COUNTY	TOTAL SHEETS	SHEET NO.
685	113B-3	HANCOCK	48	21
STA. 116+00.00 TO STA. 122+00.00				
FED. ROAD DIST. NO.		ILLINOIS	FED. AID PROJECT	

SEC. 12, T.7N.-R.8W., 4TH PM

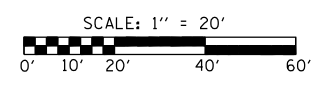


INTERSECTION LAYOUT  
(STATION / OFFSET / ELEVATION)

(A) 116+26.44 - 12' LT. (IL 96) - 531.22	(L) 117+47.69 - 12' RT. (IL 96) - 532.02
(B) 116+92.01 - 23.1' LT. (IL 96) - 531.49	(M) 14+85.13 - 28.7 LT. - 531.50
(C) 16+08.23 - 20.6' LT. - 531.48	(N) 13+51.42 - 12.1' LT. - 531.66
(D) 16+67.25 - 12' LT. - 532.67	(O) 12+54.06 - 12' LT. - 532.10
(E) 17+02.49 - 12' LT. - 533.49	(P) 12+00.78 - 12' LT. - 532.34
(F) 17+44.11 - 11' LT. - 534.48	(Q) 12+00.78 - 12' RT. - 532.34
(G) 17+28.69 - 11' RT. - 534.12	(R) 12+54.06 - 12' RT. - 532.10
(H) 17+10.99 - 11' RT. - 533.71	(S) 13+46.44 - 12' RT. - 531.68
(I) 16+65.57 - 12.7' RT. - 532.62	(T) 14+12.54 - 15.9' RT. - 531.34
(J) 15+68.33 - 26.0' RT. - 531.40	(U) 118+82.27 - 21' RT. (IL 96) - 532.34
(K) 118+16.98 - 12' LT. (IL 96) - 532.47	(V) 119+53.72 - 12' RT. (IL 96) - 532.29

PROP. CURVE 30002  
PI STA. = 14+18.30  
 $\Delta = 40^\circ 00' 04''$  (RT)  
D = 28° 38' 52"  
R = 200.00'  
T = 72.80'  
L = 139.63'  
E = 12.84'  
e = N/C.  
T.R. = N/A  
S.E. RUN = N/A  
P.C. STA = 13+45.50  
P.T. STA = 14+85.13

PROP. CURVE 30001  
PI STA. = 12+27.58  
 $\Delta = 15^\circ 15' 51''$  (LT)  
D = 28° 38' 52"  
R = 200.00'  
T = 26.80'  
L = 53.28'  
E = 1.79'  
e = N.C.  
T.R. = N/A  
S.E. RUN = N/A  
P.C. STA = 12+00.78  
P.T. STA = 12+54.06



REVISIONS	
NAME	DATE

ILLINOIS DEPARTMENT OF TRANSPORTATION  
**PLAN & PROFILE SHEET**  
IL ROUTE 96 & APPLE RIVER ROAD  
HANCOCK COUNTY  
SCALE: 1" = 20'  
DATE: 07/2007  
DRAWN BY: SGL  
CHECKED BY: FML

PLOT DATE = Aug-23-2007 11:02:00AM  
FILE NAME = c:\projects\685448A\116-122\plan\plan116.dgn  
PLOT SCALE = 42.3536 / IN.  
USER NAME = laughlin-1