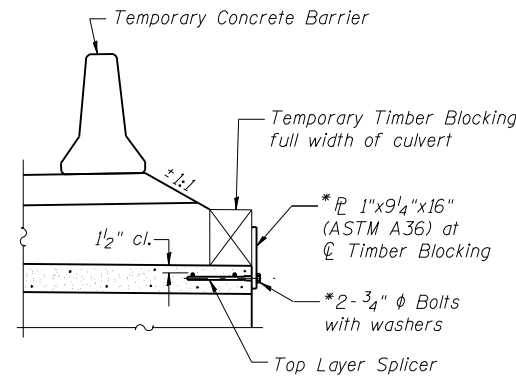
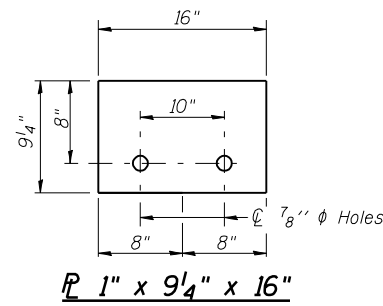
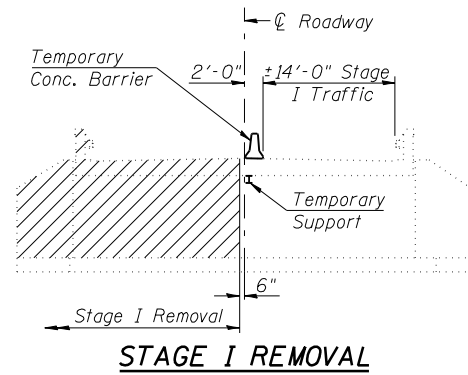
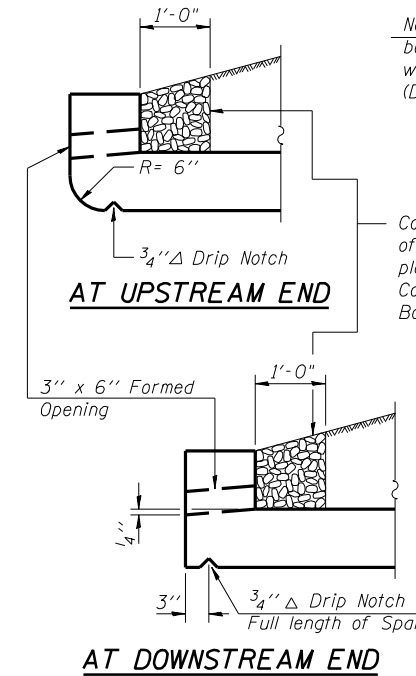


Contract #72919



DETAIL A

* Cost included with Concrete Box Culverts. Remove plate after Stage II construction of culvert sidewalls.

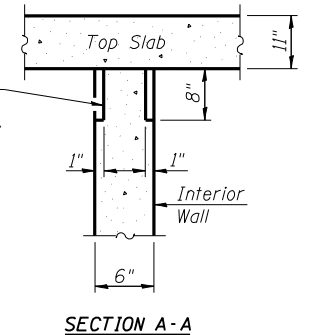


AT UPSTREAM END

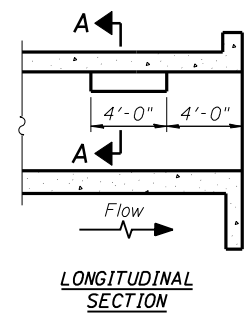
AT DOWNSTREAM END

Notch formed by rough finished board attached to and removed with formwork, each interior wall. (Do not chamfer).

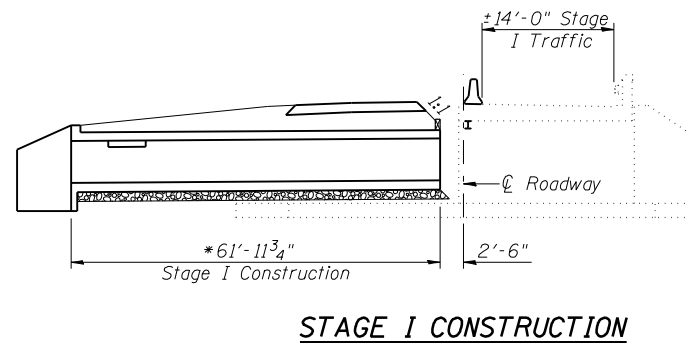
Coarse aggregate full length of both headwalls. To be placed by Grading Contractor. Cost included with Concrete Box Culverts.



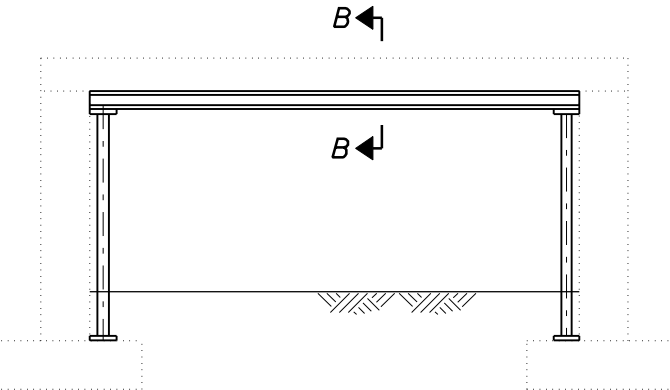
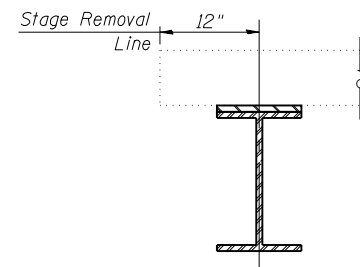
SECTION A-A



PHOEBE NESTING SITE DETAILS
(Downstream End Only)

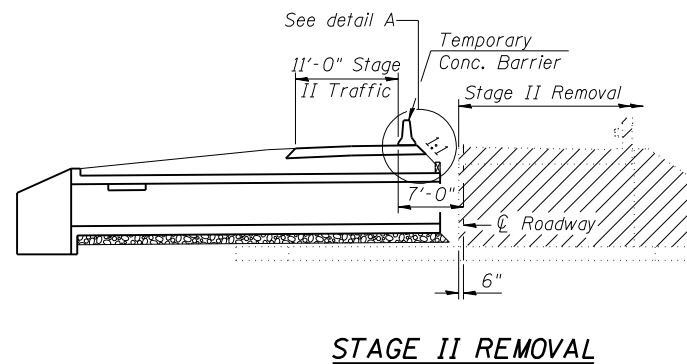


STAGE I CONSTRUCTION

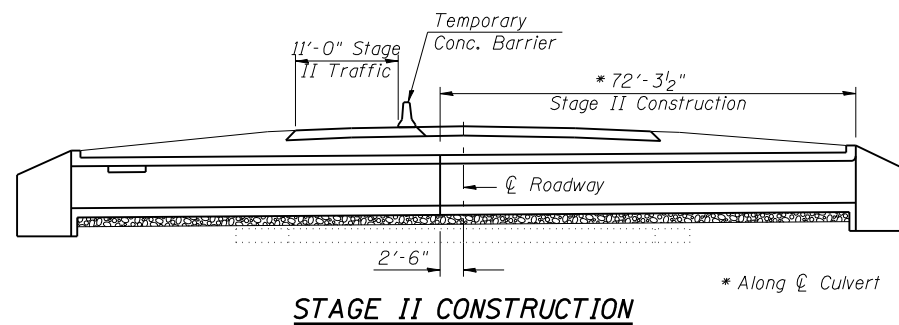


Notes:

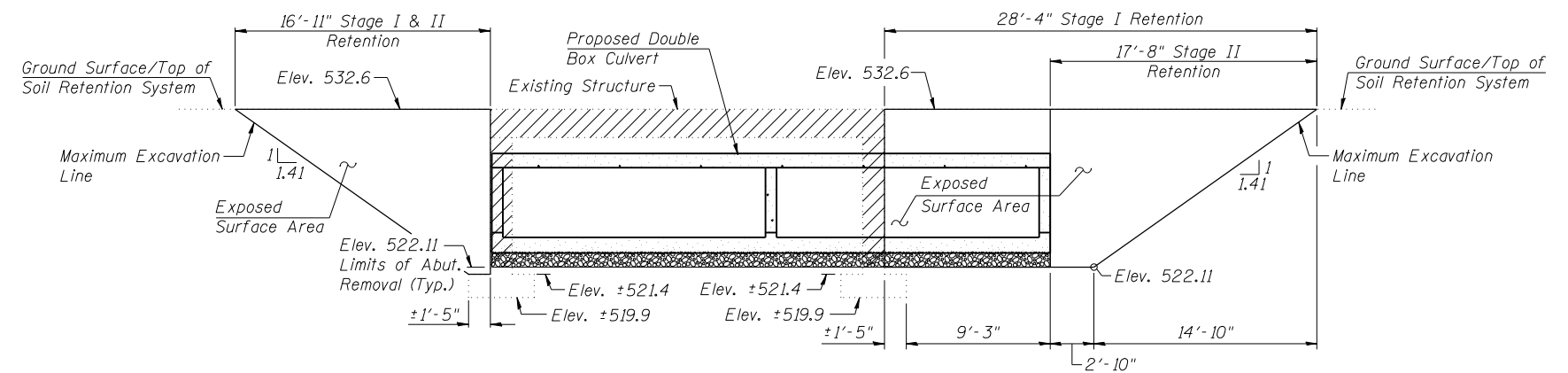
1. Place Temporary Support prior to Stage I Removal
2. Place Temporary Support along skew.
3. Temporary Support System shall not be painted.



STAGE II REMOVAL



STAGE II CONSTRUCTION



ELEVATION - TEMPORARY SOIL RETENTION SYSTEM

(Looking North)

Notes:

1. Hatched area indicates Removal of Existing Structures.
2. All staging cross sections are looking east.
3. All dimensions are perpendicular to ϕ Roadway unless noted otherwise.
4. For details of Temporary Concrete Barrier for Stage I traffic over existing slab, see Sheet 5 of 6.
5. For quantity of Temporary Concrete Barrier, see Roadway Plans.

A cantilevered sheet piling design does not appear feasible and additional members or other retention systems may be necessary. The Contractor shall submit a temporary soil retention system design including plan details and calculations for review and acceptance by the Engineer.

Lin Engineering, Ltd.
Consulting Engineers
Chatham, Illinois

Designed By: JVR
Checked By: DLS
Date: 08/2007

Drawn By: AUF
File: 034-2520.DGN

REVISIONS	
NAME	DATE

ILLINOIS DEPARTMENT OF TRANSPORTATION
STAGE CONSTRUCTION DETAILS
IL ROUTE 9/IL ROUTE 96
OVER SIDE ROAD DITCH
F.A.P. ROUTE 685 - SECTION 113B-3
HANCOCK COUNTY
STA. 118+70.44
STRUCTURE NO. 034-2520